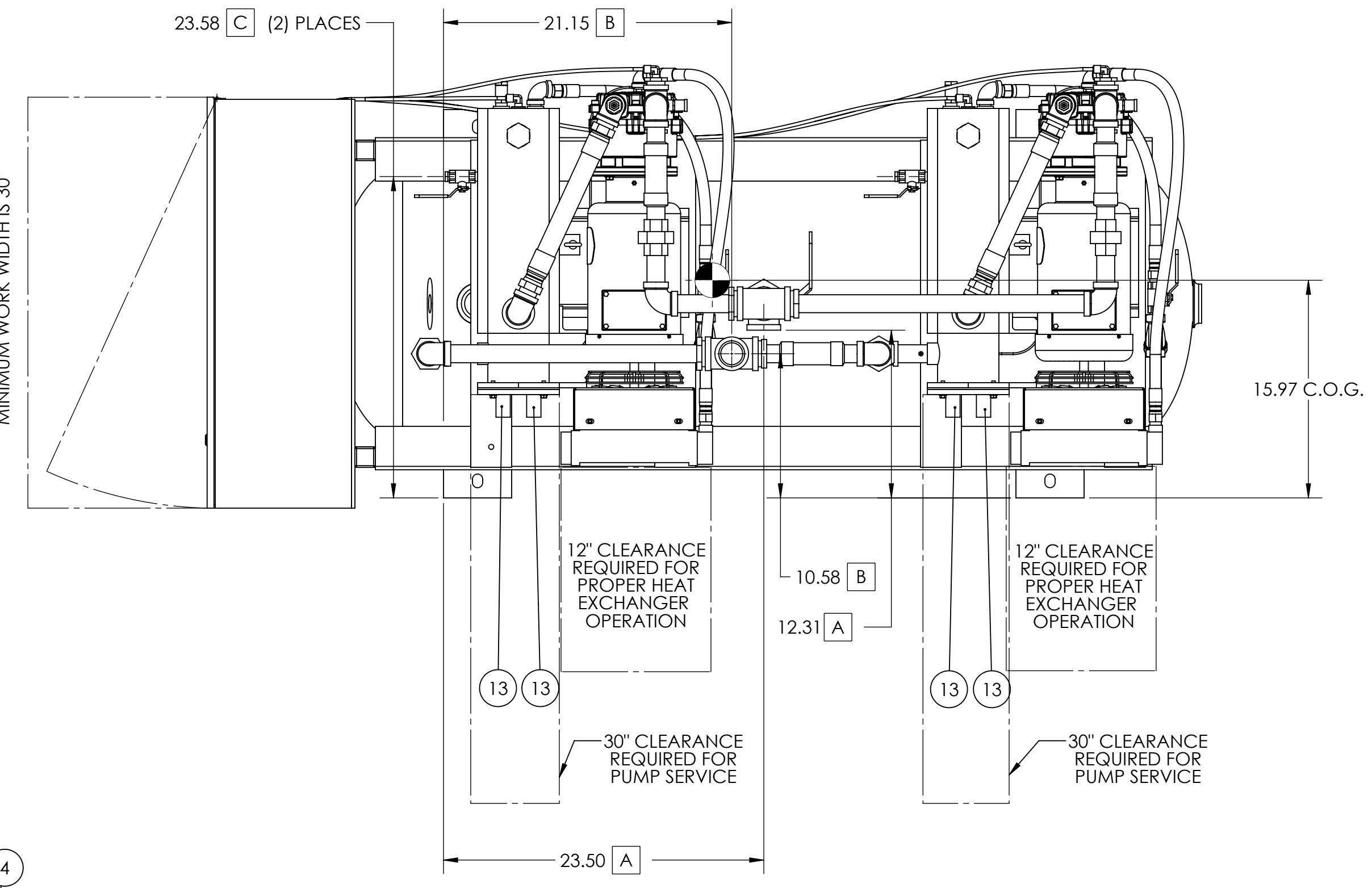
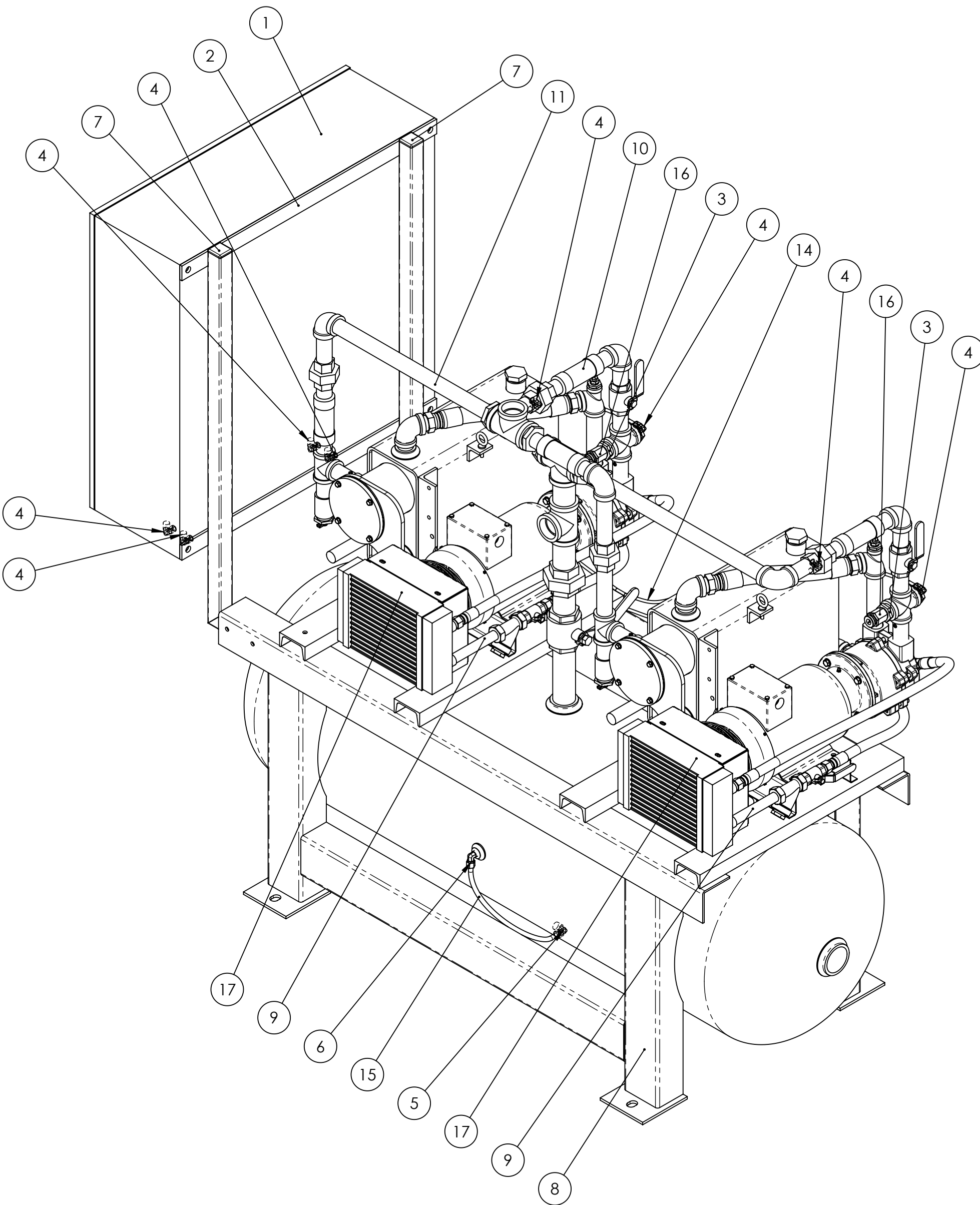
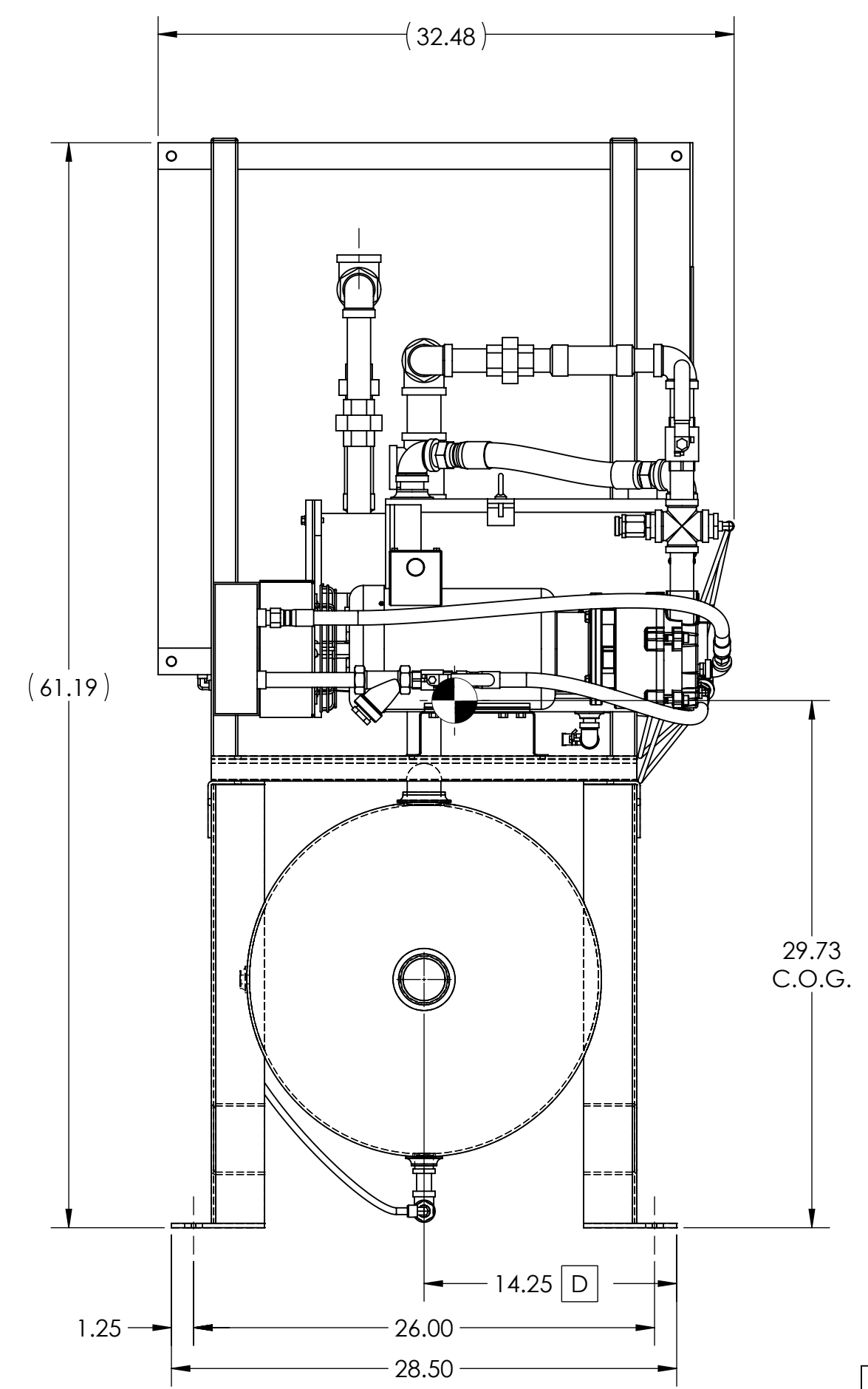
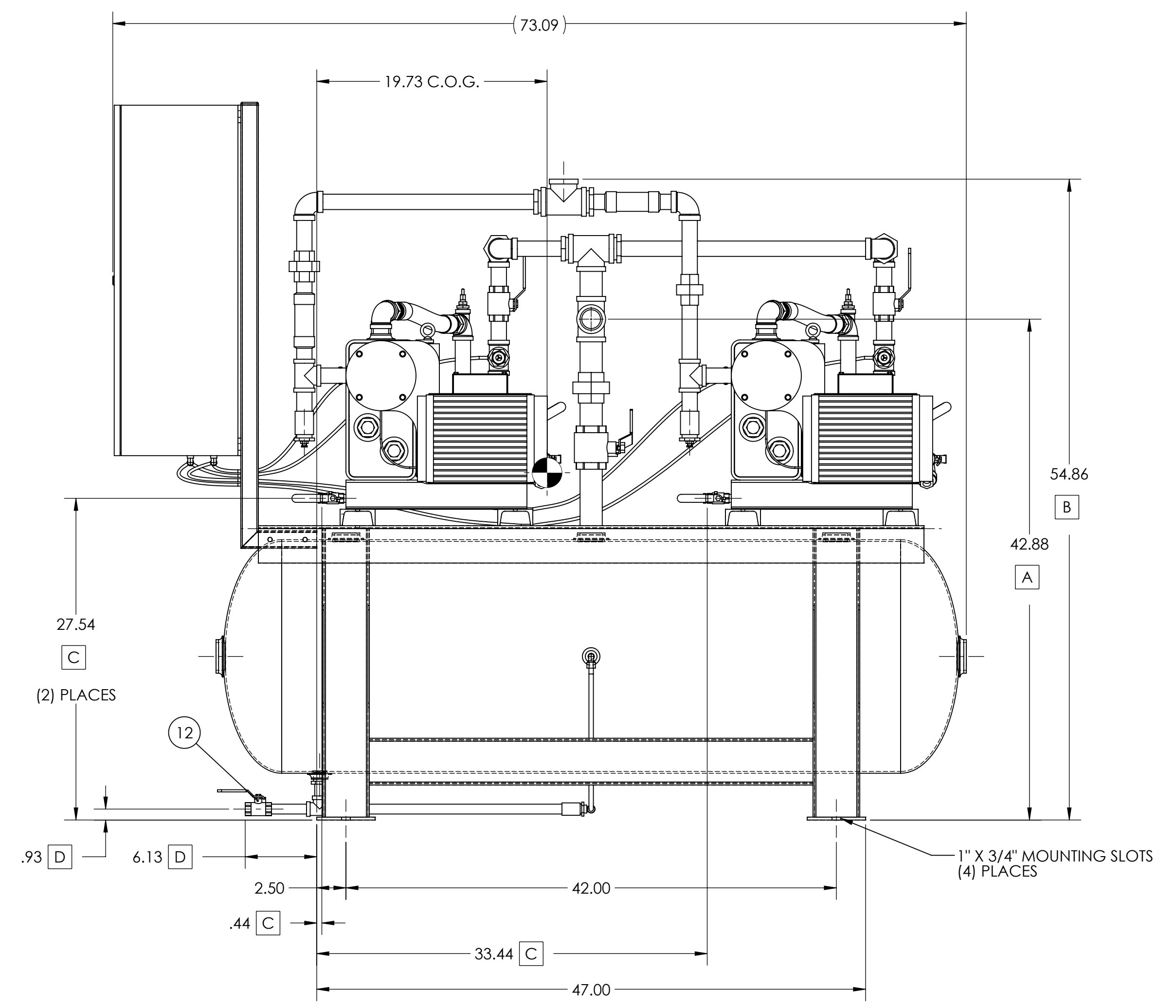


**SYSTEM APPROVAL**  
 APPROVED BY:  
 DATE:



078284				
ITEM NO.	QTY	LENGTH	DESCRIPTION	PART NUMBER
1	1		MEDICAL CTRL PNL 3HP DUPLEX VMAX 460V	2202-0782-840
2	1		BRACKET CNTL PNL 30X30X10	2730-2017-921
3	2		BUSHING 1.0"MNPT X .75"FNPT CS	3002-1075-0
4	8		FTNG 90° .25"MNPTX.25"UBE BRS PUSH	3039-0025-001
5	1		FTNG 90° .38"MNPTX.38"UBE BRS PUSH	3039-0038-000
6	1		FTNG 90° .25"MNPTX.38"UBE BRS PUSH	3039-2538-000-R
7	2		PLUG PROTECTIVE 1.5" SQR POLY	3842-0150-000
8	1		RCVR TNK HRZ 80G CS GRASSHOPP MOD	6008-0080-001
9	2		SUB ASSEMBLY PIPING VMX0036M AIRCOL	6870-0036-011
10	1		SYSTEM INLET MANIFOLD	6890-076156-1
11	1		SYSTEM DISCHARGE MANIFOLD	6890-076156-2
12	1		TANK DRAIN	6890-2013-053007-3
13	4		SWITCH LEVEL 1" MNPT N7 BRS/SST/GOLD	6910-0100-007
14	1	240	TUBING .25"OD FEP/TEFLN TRANSLUCENT	7200-0025-001
15	1	18.25	TUBING .38" OD FEP/TEFLN TRANSLUCNT	7200-0038-001
16	2		VALVE VAC RELIEF .75" ADJ 50 SCFM	7342-0075-000
17	2		VMAX 35 CFM SYSTEM 3HP MTR MOUNT	VMX0036MA1-11

SYSTEM NOZZLE SCHEDULE		
IDENTIFIER	CONNECTION	SIZE
A	VAPOR INLET	1-1/2" FNPT
B	VAPOR DISCHARGE	1-1/2" FNPT
C	PUMP DRAIN	3/8" FNPT
D	RECEIVER TANK DRAIN	1/2" FNPT



- NOTES:  
 1) LOCATE VACUUM PUMP ON FLAT LEVEL SURFACE.  
 2) PLUG ALL UNUSED PORTS WITH NPT PLUG.  
 3) OIL CAPACITY (PER PUMP): 1.6 GALLONS P/N: 5220-3300-000  
 4) REFERENCE WI-EN-039 FOR ALL HARDWARE TORQUE SPECIFICATIONS.

REVISIONS						
REV.	DESCRIPTION	DATE	DWG	ERP	APP	
A	REVISED FROM 200V TO 460V, SINGLE TO DUAL POWER FEED PANEL AND CIRC BRKR PER CUST REQ 4/19/18	5/9/2018	AWH	AWH	RHC	

**TOLERANCES**  
 DECIMAL ± .50"  
 FRACTIONAL ± 1/2"  
 ANGULAR ± .50°  
 UNLESS OTHERWISE SPECIFIED IN DRAWING

MODEL NO. VMX0036MA2-00-CS  
 PART NO. 078284  
 DESIGN BY: RHC DATE: 3/27/2018  
 DRAWING BY: RHC DATE: 3/27/2018  
 CHECKED BY: TJA DATE: 4/27/2018  
 APPROVED BY: AWH DATE: 4/4/2018  
 PROJECT ENG: RHC

**DEKKER**  
 VACUUM TECHNOLOGIES, INC.

DESCRIPTION: VMX0036MA2-40-CS 460V TEFC  
 DRAWING TYPE: SUBMITTAL  
 DWG NO.: 2018157-D  
 WEIGHT: 904.15 LB  
 SCALE: 1:8  
 SHEET NO.: 1 OF 1