

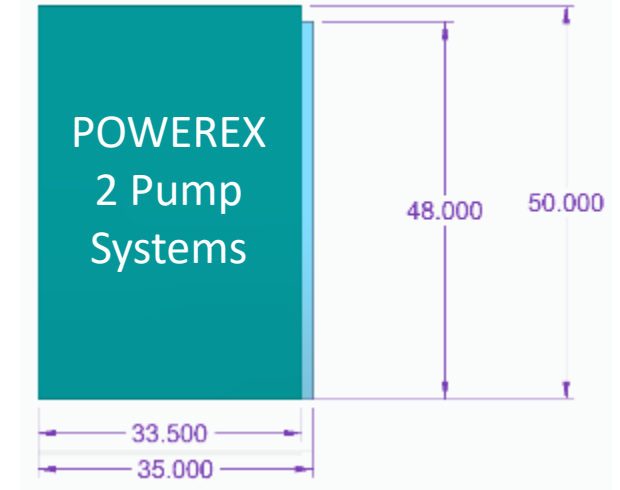
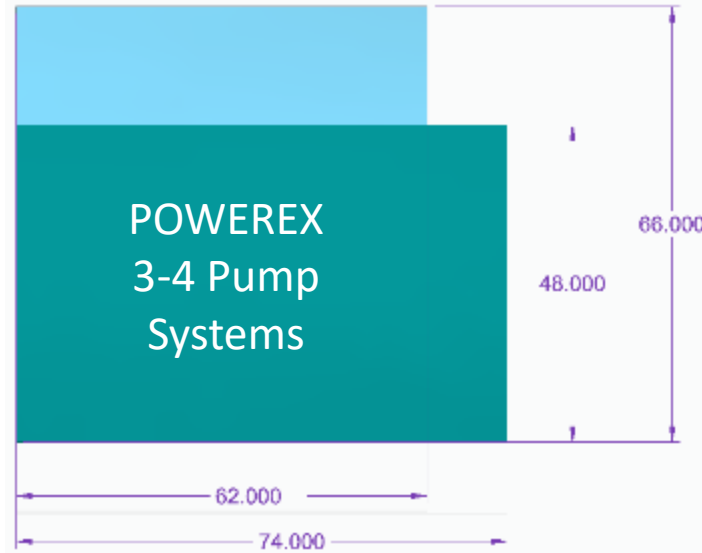
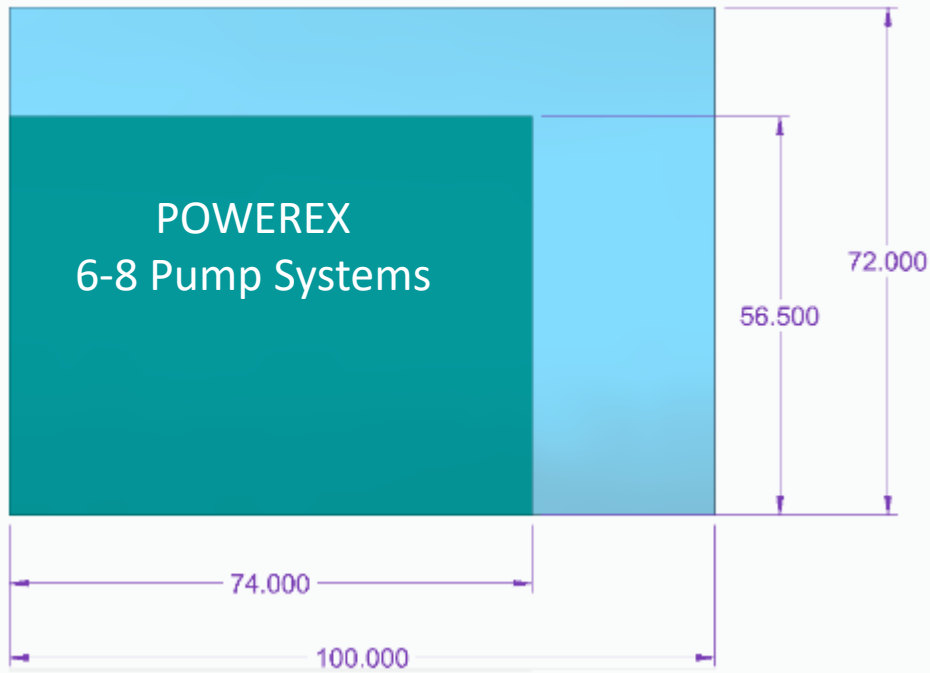
# Medical/Lab Air System Upgrades

2,3, and 5HP Scroll Systems

# Medical/Lab Air System Upgrades – 2 thru 5HP Pumps



# Major Updates – Best in Class Footprint



Competition



POWEREX				BEACON EQUIVALENT				DIFFERENCE	
MODEL	Length (IN)	Width (IN)	Area (FT <sup>2</sup> )	MODEL	Length (IN)	Width (IN)	Area (FT <sup>2</sup> )	Area (FT <sup>2</sup> )	%
LSD0503	50	33.5	11.63	LAS05D-080V-D	48	35	11.67	0.03	0.3%
LST0504	48	74	24.67	LAS05T-120V-T	66	62	28.42	3.75	13.2%
LSQ0504	48	74	24.67	LAS05Q-200V-Q	66	62	28.42	3.75	13.2%
LSD1005	48	74	24.67	LAS10T-200V	66	62	28.42	3.75	13.2%
MSD0503	50	33.5	11.63	SAS05D-080V-D	48	35	11.67	0.03	0.3%
MSD0503-EX3	48	74	24.67	SAS05D-120V-T	66	62	28.42	3.75	13.2%
MST0503	48	74	24.67	SAS05T-120V-T	66	62	28.42	3.75	13.2%
MSQ0504	48	74	24.67	SAS05Q-120V-Q	66	62	28.42	3.75	13.2%
MSD1006	48	74	24.67	SAS10D-240V-D	66	62	28.42	3.75	13.2%
MST1005	56.5	74	29.03	SAS10T-200V-T	100	72	50.00	20.97	41.9%
MSQ1006	56.5	74	29.03	SAS10Q-240V-Q	100	72	50.00	20.97	41.9%

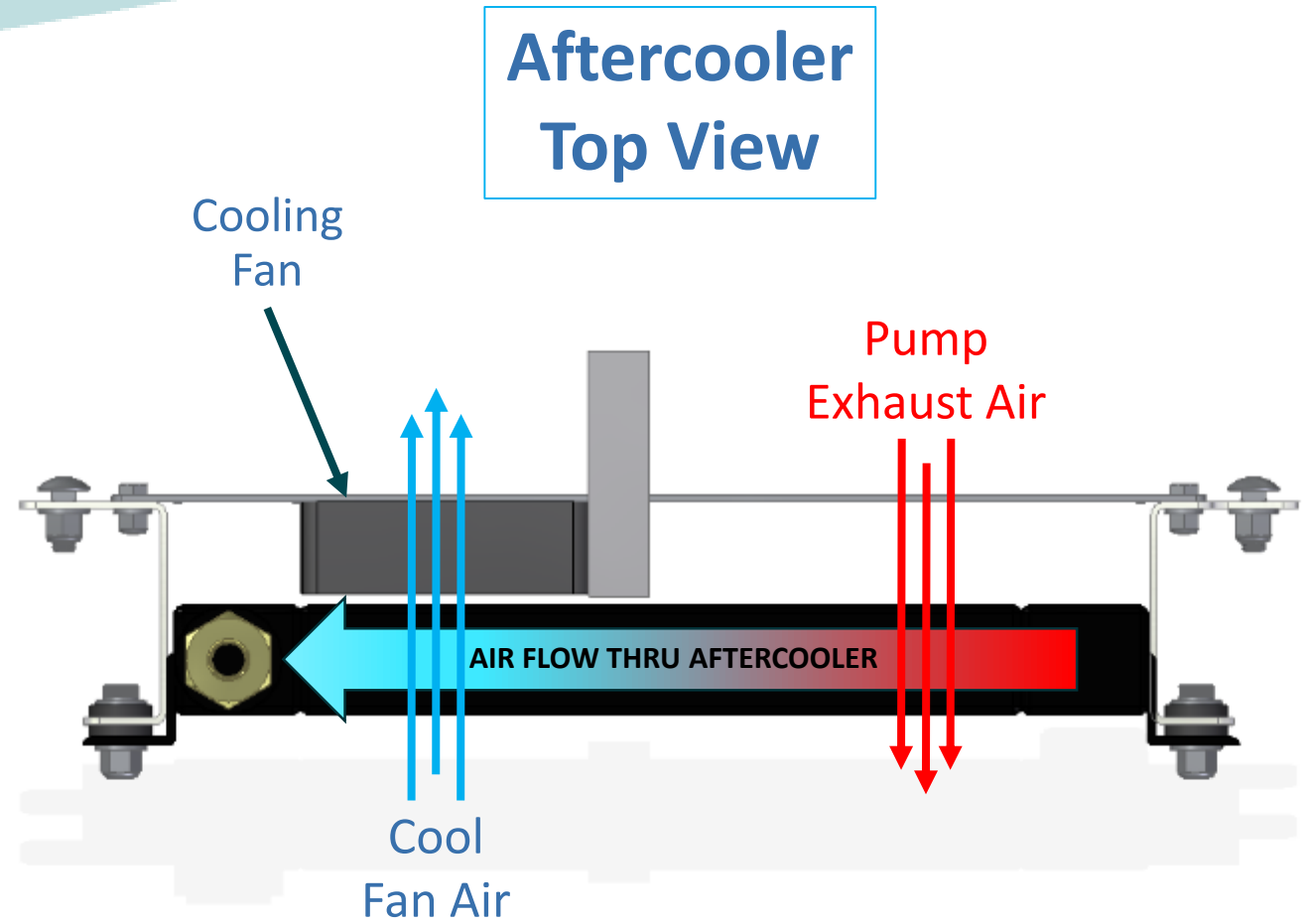
# Major Updates – Features and Performance

- Dryer standardization
  - Trident desiccant dryers
- 16°F approach temperature
  - Patent-pending air cooling method
- All systems have single air inlet standard, including Lab
- Efficient rack design



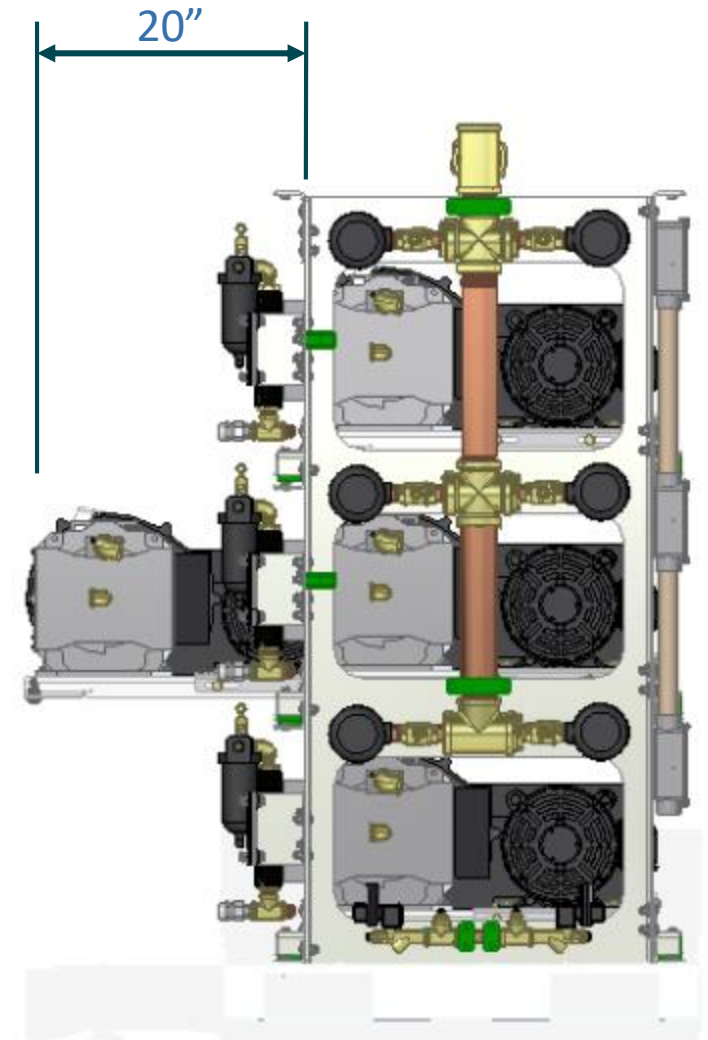
# Major Updates – Approach Temperature

- 16°F approach temp
  - Improved dryer life
  - Achieve dew point levels
  - Efficient dryer sizing
- Patent-pending air cooling method



# Major Updates – Serviceability

- Service slide
  - Basemount can extend over 20" from the rack
  - Easy access for pump and belt maintenance
  - Patented



# Major Updates – Serviceability

- Easy access to other service items:
  - Air filters
  - Water separators
- Flex hoses
- Controls, DP/CO monitors all on single side



# Major Updates – Durability

- Improved moisture separator design
  - Removed float drain
  - Moisture removal controlled by dual electronic auto timer drain
  - Eliminates issue of float sticking





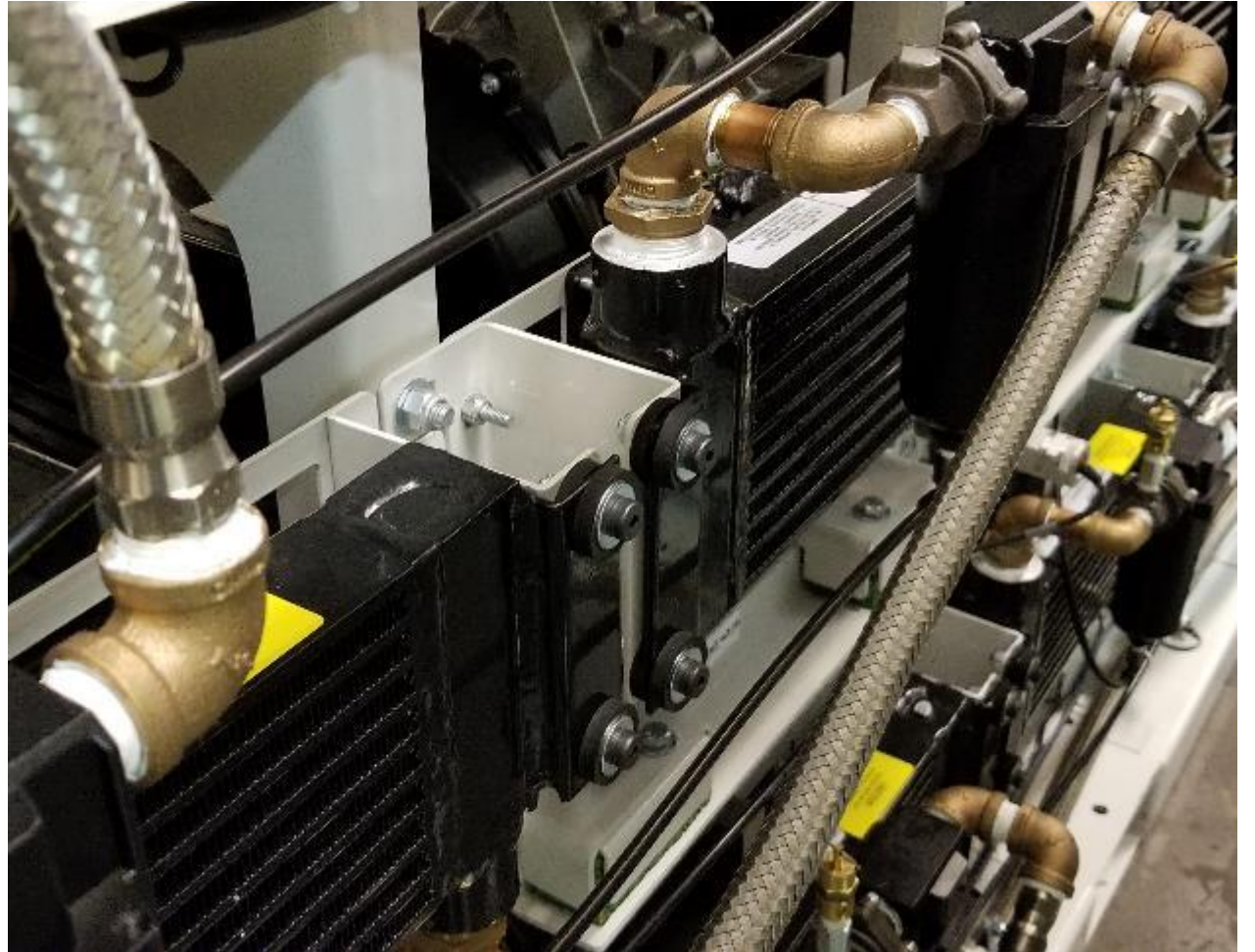
# Major Updates – Durability

- Vibration isolators
  - Iso pads for each basemount
  - Reduces wear/tear from vibration



# Major Updates – Durability

- Aftercooler mounting
  - Aftercoolers hard-mounted to frames
  - Eliminates wear/tear from being cantilever off basemount
  - Includes vibration iso pads



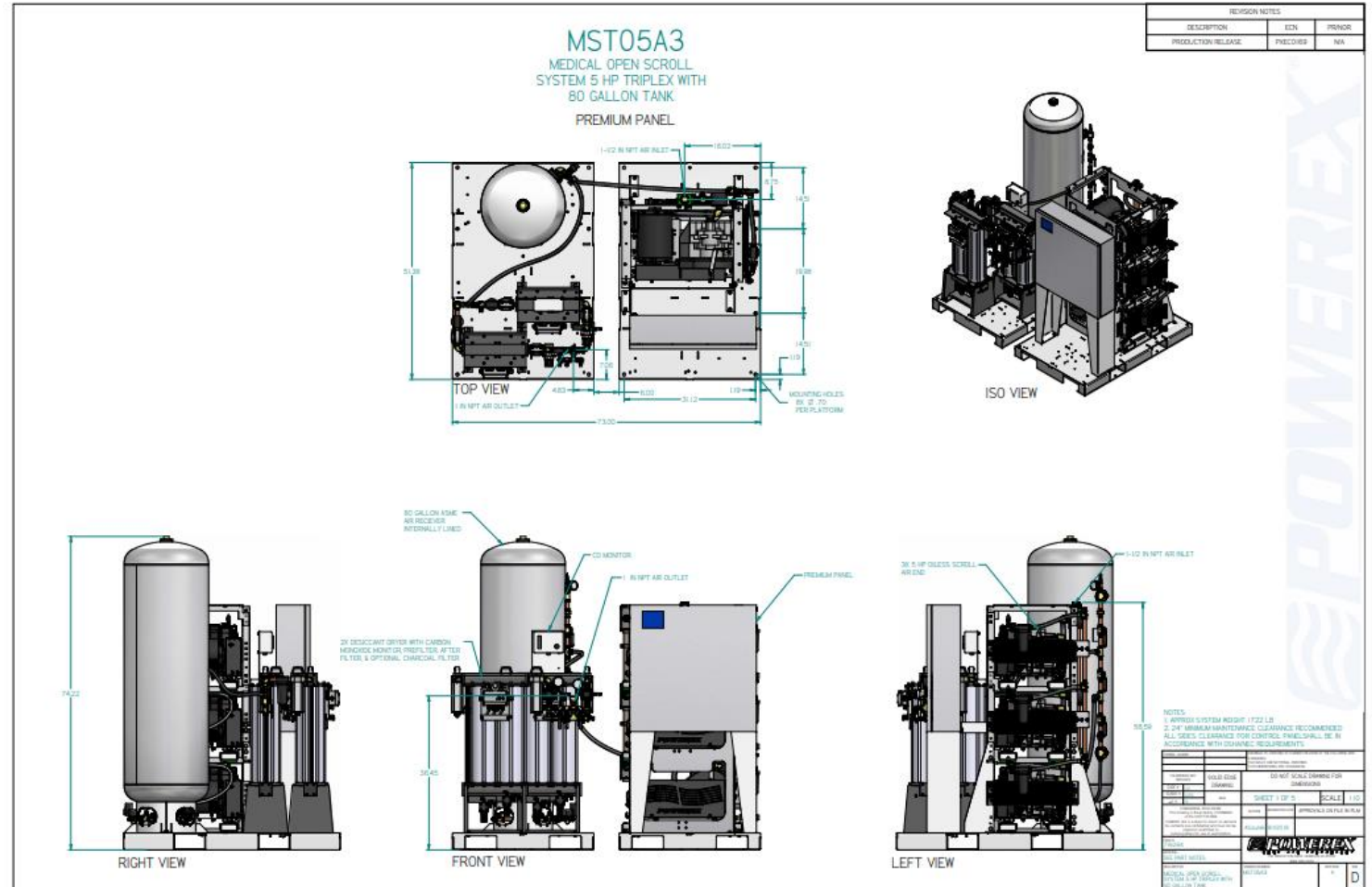
# Major Updates – Footprint and Mobility

- All systems can fit through standard 36" door (without tank)
- All skids have 4-way access for forklift and pallet jack

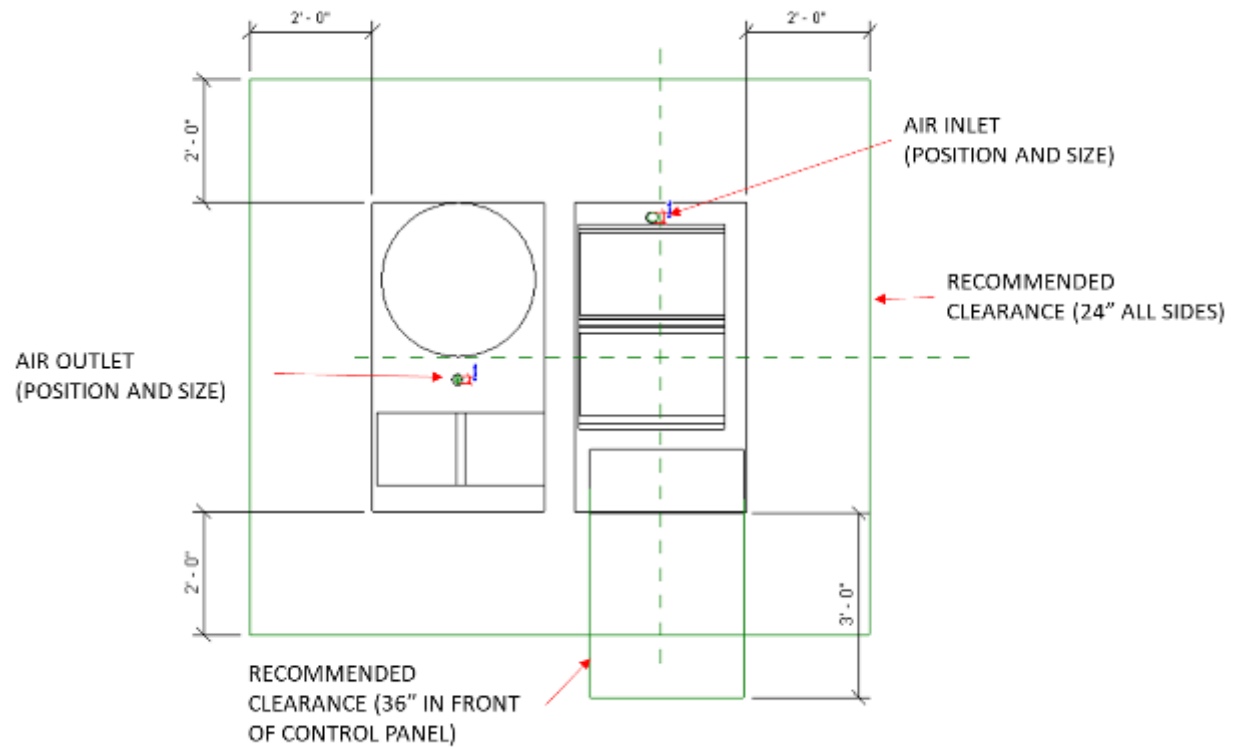
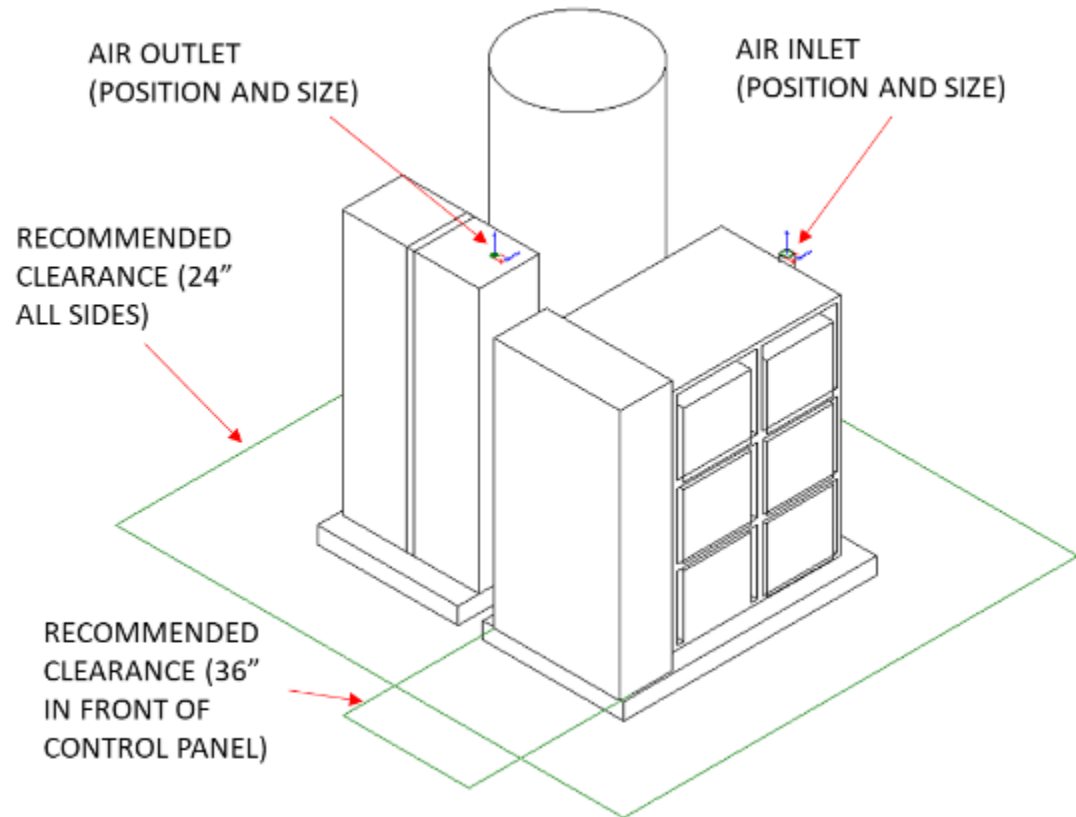


# Major Updates – CAD files

- CAD file availability:
  - 3D CAD
  - Revit
  - 2D assembly drawing
  - Pneumatic flow drawing
  - Electrical drawing
- *Revit and drawings to be available on website*



# Revit Example



# Availability

- All systems available to quote now!!!
- Pricing same as previous equivalents (2018 pricing)
- Initial lead time is 6-8 weeks, will improve to standard lead times within a couple months

# Source Equipment – Control Panel Options

## STANDARD PREMIUM CONTROL PANEL

- PLC controller and 6" color HMI (Human Machine Interface) touch screen displays the operating status of the unit.
- UL508A listed and labeled, NEMA 4/12 enclosure.
- Visual and audible alarms for:
  - System overload trip.
  - High temperature conditions.
  - Service intervals.
  - High dew point and CO levels.
- Panel door includes:
  - Visual and audible alarms.
  - HOA switch for each pump.
  - 3-position dryer switch.
- Integrated dew point and carbon monoxide monitors.
- Building automation gateway with BacNet® protocol.
- Email notifications for alarms and service alerts.



# Source Equipment – Control Panel Options

## OPTIONAL NON-HMI CONTROL PANEL

- UL508A listed and labeled, NEMA 4/12 enclosure.
- Timed lead/lag compressor alternation.
- Visual and audible reserve compressor in use alarm.
- Redundant control circuit transformers.
- Dry contacts for remote alarm monitoring.
- Each compressor provided with:
  - Hand/Off/Auto selector switch.
  - Magnetic starter with 3 leg overload protection.
  - Visual and audible high temperature shut down.
  - Hour meter.
  - Compressor run light.
- Dew point monitor with LCD dew point display.
- Carbon monoxide monitor with LCD display of CO concentrations.

