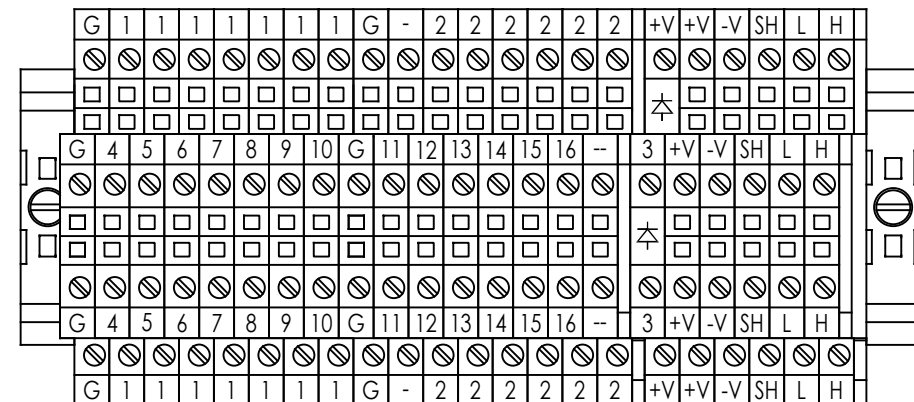


BILL OF MATERIALS				
ITEM	QTY	LABEL	DESCRIPTION	PART NUMBER
1	1	ENCL	ENCLOSURE N4/12 24" X 20" X 8"	2607-2420-080
2	1	ENCL	ENCLOSURE BACK PANEL 24" X 20"	2607-2420-001
3	1	DISC-1	DISCONNECT CIRCUIT BREAKER 35A	2670-0030-005
4	1	DISC-1	DISCONNECT CIRCUIT BREAKER HANDLE	2670-0030-001
5	1	M-1	CONTACTOR AC IEC 25A 3PH C-H 24VDC	2598-0025-001
6	1	OL-1	OVERLOAD RELAY FRAME C 16-24A C-H	2625-0024-001
7	1	PS-1	POWER SUPPLY 24VDC 5A 120/240VAC	2621-0024-011
8	1	PS-2	24V DC/DC CONVERTER 1A 24VDC	2621-0024-026
9	1	FB-1	FUSE HLD R FINGSF CL. CC 2POLE IND	2611-0002-002
10	2	FB-2,3	ELEC. TERM BLOCK 2 LEVEL FUSED INDICATING	2604-2412-008
11	1	FB-3	END SECTION FOR DOUBLE LEVEL FUSED TB	2606-2412-012
12	2	FU-1,2	FUSE 4 AMP TIME DELAY CLASS CC	2610-0004-001
13	1	FU-3	FUSE 4 AMP 5x20mm GLASS FUSE TIME DELAY	2610-0004-004
14	1	FU-4	FUSE, 1A, 250VAC, 5X20mm, GLASS SLO-BLOW	2610-0001-020
15	1	PLC-1	DEKKER CUSTOM V430 12IN/10OUT CANBUS	2540-2400-017
16	1	PLC-1	MICROSD MEMORY CARD 8GB	2555-0008-000
17	1	TR-1	TRANS PRESS 0-15PSIA 4-20MA	7120-0025-020
18	1	TR-2	TRANS PRESS 0-15PSIG 0-10VDC	7120-0025-008
19	2	--	BUSHING BULK.75"UNC X .25"FNPT BRS	3002-7525-004
20	1	RESET	PUSH BUTTON OVERLOAD RELAY RESET	2630-0010-000
21	1	D-1	ELEC. TERM BLK 2-LEVEL 6.2MM W/DIODE	2604-2412-003
22	19	TS	ELEC. TERM BLOCK DOUBLE LEVEL 6.2MM	2604-2412-004
23	2	TS	ELEC. TERMINAL BLOCK GND 6.2 2-TIER	2604-2412-005
24	2	TS	ELEC. TERMINAL BLOCK END COVER	2606-2412-000
25	6	TS	ELEC. TERMINAL BLOCK END SECTION DIN	2606-2412-002
26	1.55	DIN RAIL	ELEC. TERM. BLK. DIN RAIL 7.5 X 35MM	2602-2410-000
27	1.42	WIRE DUCT	WIRING DUCT W/ COVER 1.00"X2.25" WH	9702-0100-225
28	2.2	WIRE DUCT	WIRING DUCT W/ COVER 1.50"X2.25" WH	9702-0150-225
29	2	GND	LUG, GROUNDING, 14-2 AWG	2552-1402-000
30	1	PLACARD	PLACARD CTRL PANEL DISC 2.50 x 0.75	2450-0000-066



REVISIONS					
REV	DESCRIPTION	DATE	DWG	ERP	APP

TOLERANCES

DECIMAL ± .0625"
 FRACTIONAL ± 1/16"
 ANGULAR ± 0° 30' 00"

UNLESS OTHERWISE SPECIFIED IN DRAWING

THIS PRINT IS PROPERTY OF DEKKER VACUUM TECHNOLOGIES, INC. AND MAY NOT BE GIVEN TO ANY OTHER CONCERN WITHOUT THE CONSENT OF DEKKER VACUUM TECHNOLOGIES, INC.

MODEL NUMBER: VMX0103
 PART NUMBER: 2273-0780-950
 DESIGN BY: DLA DATE: 4/11/18
 DRAWING BY: DLA DATE: 4/11/18
 CHECKED BY: JMD DATE: 4/11/18
 APPROVED BY: AWH DATE: 4/20/18
 PROJECT ENG: AWH SERIAL NUMBER: -

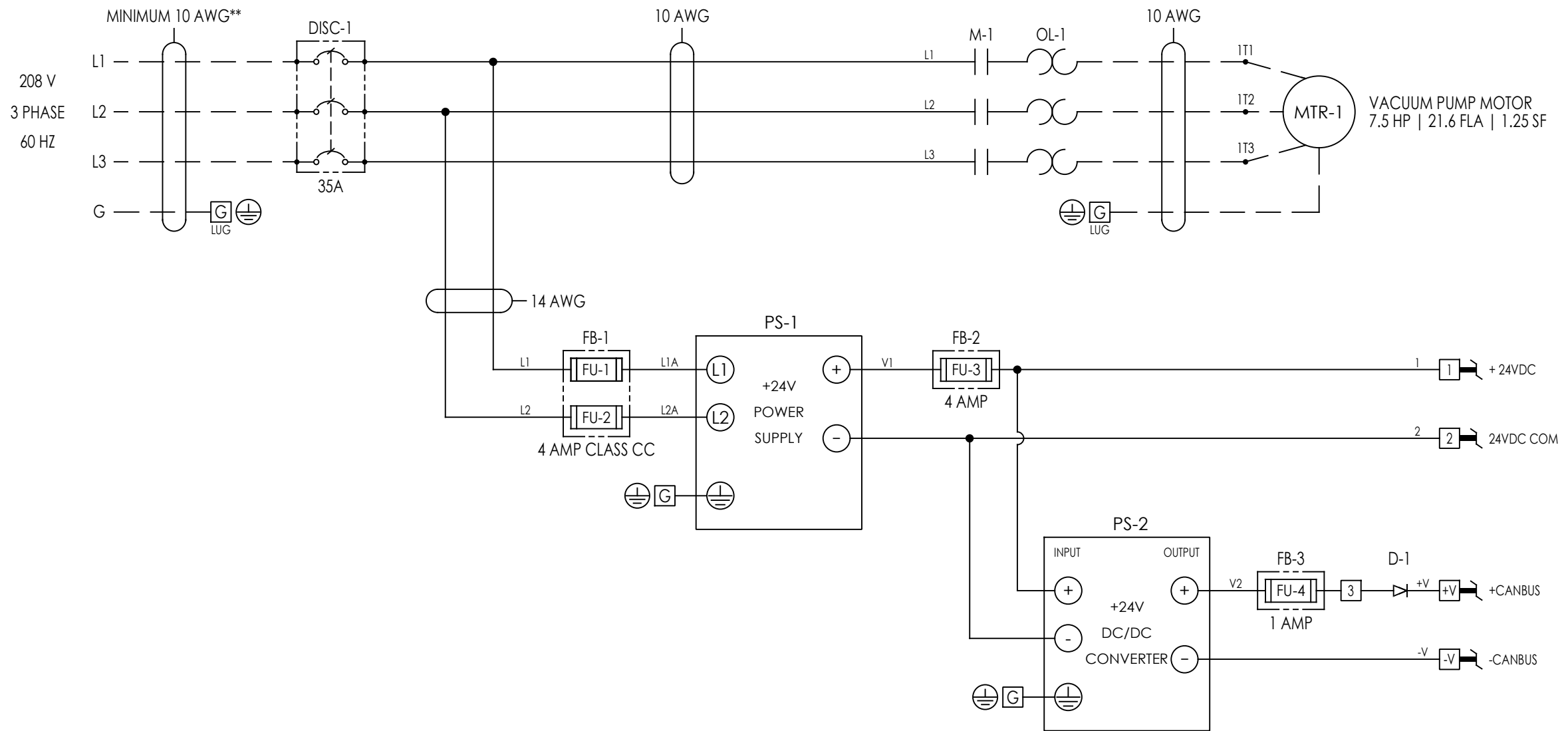
DESCRIPTION:
 INDUSTRIAL CONTROL PANEL SIMPLEX
 7.5HP CONTROLDEK 200V N12 W/DISC

DRAWING TYPE: - DWG NUMBER: 2018236-B
 WEIGHT: 50 LBS SCALE: NONE SHEET NUMBER: 1 OF 4

PANEL VOLTAGE: 208V / 3 PHASE / 60HZ
 PANEL FULL LOAD AMPS: 22.0 AMPS
 LARGEST MOTOR: 7.5 HP
 SCCR: 24KA RMS SYMMETRICAL AT 240V MAXIMUM

** REFER TO APPLICABLE ELECTRICAL CODES FOR
 UPSTREAM PROTECTION AND INPUT WIRE SELECTION

POWER DISTRIBUTION



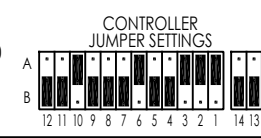
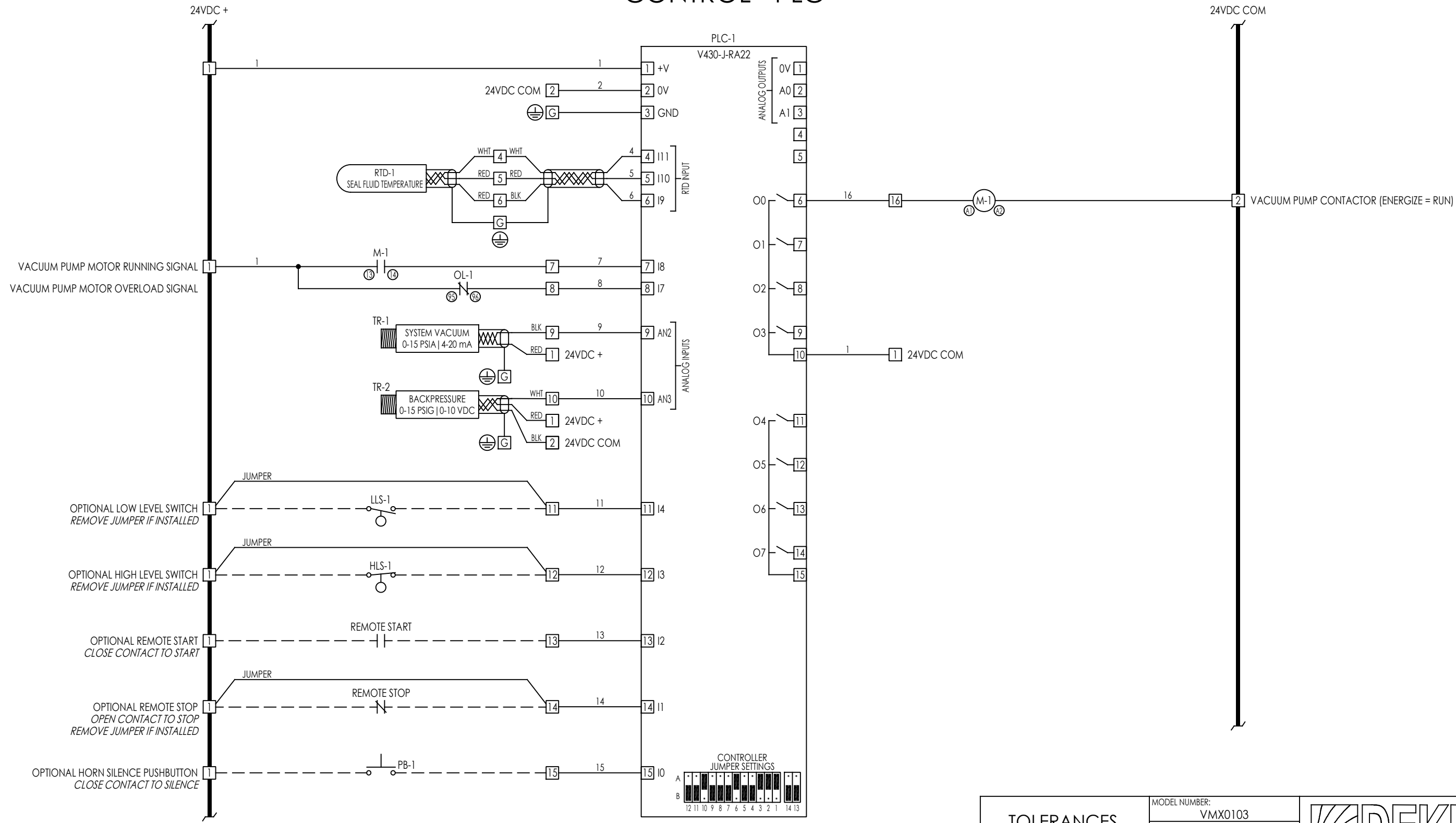
NOTES:

- INDICATES TERMINAL BLOCK
- INDICATES RELAY TERMINAL POINT
- USE COPPER WIRE ONLY
- REPLACE WITH LIKE FUSES ONLY
- ALL CONTACTS SHOWN WITH POWER OFF
- UL/cUL LISTED CONTROL PANEL
- TORQUE TERMINAL BLOCKS TO 5-7 LB-IN
- USE TEFLON TAPE ON TRANSDUCER THREADS
- DENOTES EXTERNAL WIRING

REVISIONS					
REV	DESCRIPTION	DATE	DWG	ERP	APP

TOLERANCES		MODEL NUMBER: VMX0103		
DECIMAL	± .0625"	PART NUMBER: 2273-0780-950		
FRACTIONAL	± 1/16"	DESIGN BY: DLA	DATE: 4/11/18	DESCRIPTION: INDUSTRIAL CONTROL PANEL SIMPLEX 7.5HP CONTROLDEK 200V N12 W/DISC
ANGULAR	± 0° 30' 00"	DRAWING BY: DLA	DATE: 4/11/18	
UNLESS OTHERWISE SPECIFIED IN DRAWING		CHECKED BY: JMD	DATE: 4/11/18	DRAWING TYPE: -
THIS PRINT IS PROPERTY OF DEKKER VACUUM TECHNOLOGIES, INC. AND MAY NOT BE GIVEN TO ANY OTHER CONCERN WITHOUT THE CONSENT OF DEKKER VACUUM TECHNOLOGIES, INC.		APPROVED BY: AWH	DATE: 4/20/18	DWG NUMBER: 2018236-B
		PROJECT ENG: AWH	SERIAL NUMBER: -	WEIGHT: 50 LBS
				SCALE: NONE
				SHEET NUMBER: 2 OF 4

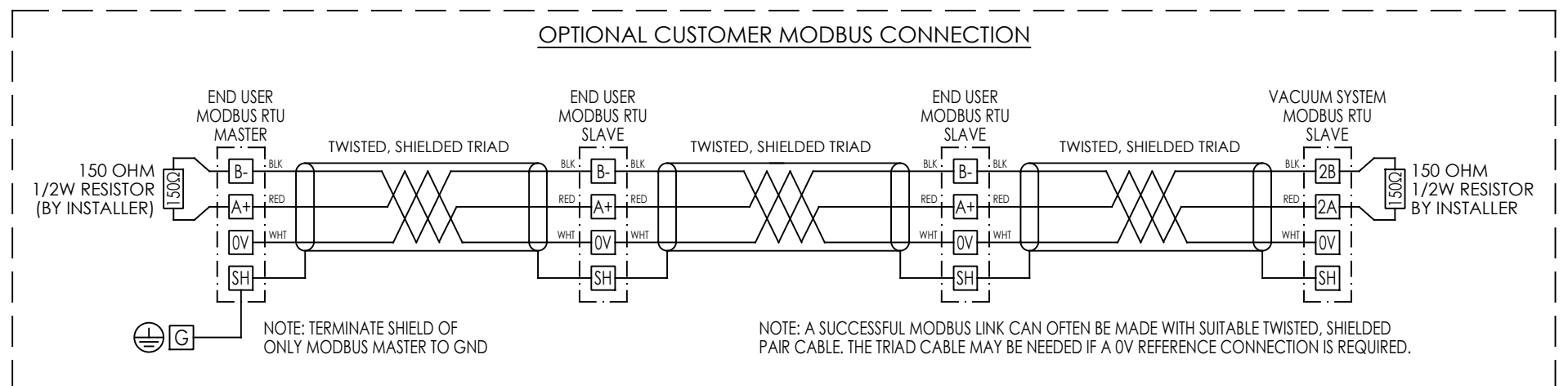
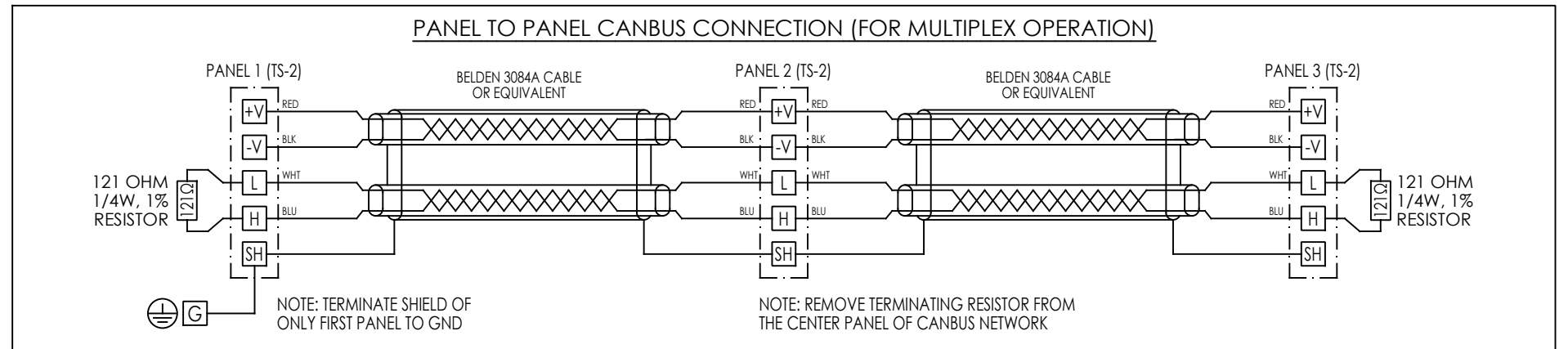
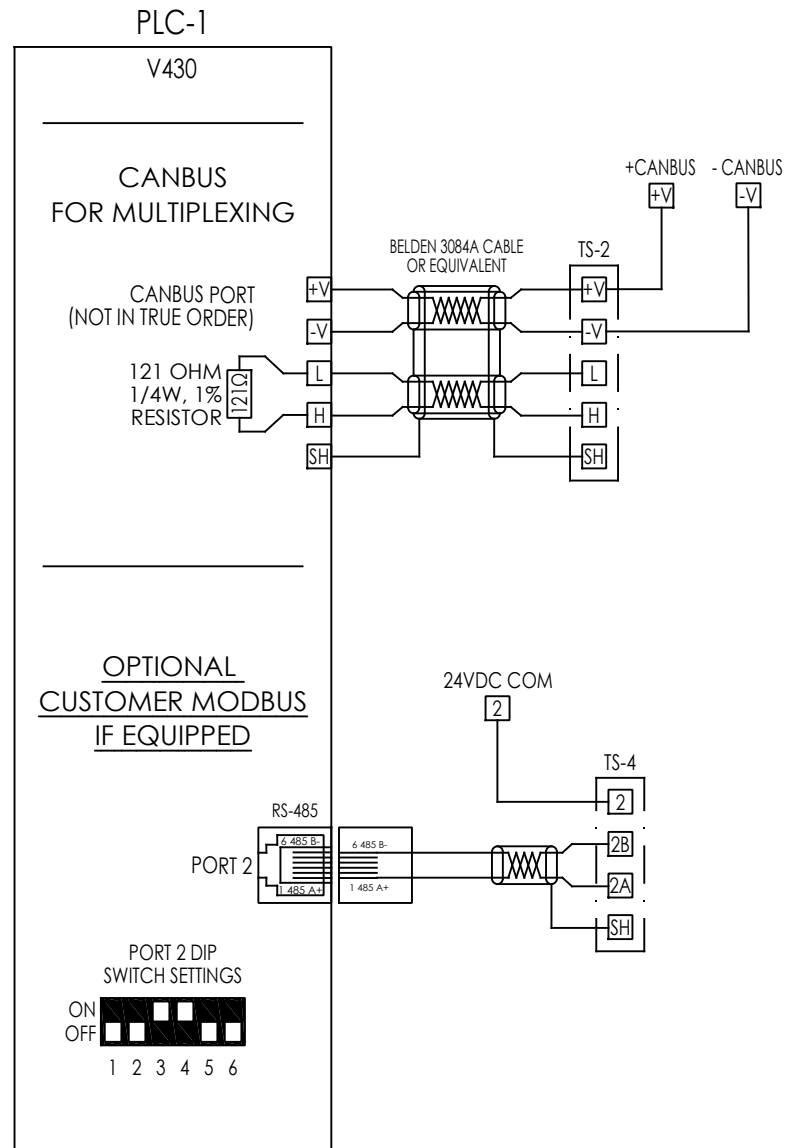
CONTROL - PLC



TOLERANCES		MODEL NUMBER: VMX0103		DEKKER VACUUM TECHNOLOGIES, INC.
DECIMAL	± .0625"	PART NUMBER: 2273-0780-950		
FRACTIONAL	± 1/16"	DESIGN BY: DLA	DATE: 4/11/18	DESCRIPTION: INDUSTRIAL CONTROL PANEL SIMPLEX 7.5HP CONTROLDEK 200V N12 W/DISC
ANGULAR	± 0° 30' 00"	DRAWING BY: DLA	DATE: 4/11/18	
UNLESS OTHERWISE SPECIFIED IN DRAWING		CHECKED BY: JMD	DATE: 4/11/18	
THIS PRINT IS PROPERTY OF DEKKER VACUUM TECHNOLOGIES, INC. AND MAY NOT BE GIVEN TO ANY OTHER CONCERN WITHOUT THE CONSENT OF DEKKER VACUUM TECHNOLOGIES, INC.		APPROVED BY: AWH	DATE: 4/20/18	DRAWING TYPE: -
		PROJECT ENG: AWH	SERIAL NUMBER: -	DWG NUMBER: 2018236-B
		WEIGHT: 50 LBS	SCALE: NONE	SHEET NUMBER: 3 OF 4

REVISIONS					
REV	DESCRIPTION	DATE	DWG	ERP	APP

PLC COMMUNICATIONS



REVISIONS					
REV	DESCRIPTION	DATE	DWG	ERP	APP

TOLERANCES

DECIMAL ± .0625"

FRACTIONAL ± 1/16"

ANGULAR ± 0° 30' 00"

UNLESS OTHERWISE SPECIFIED IN DRAWING

THIS PRINT IS PROPERTY OF DEKKER VACUUM TECHNOLOGIES, INC. AND MAY NOT BE GIVEN TO ANY OTHER CONCERN WITHOUT THE CONSENT OF DEKKER VACUUM TECHNOLOGIES, INC.

MODEL NUMBER: VMX0103	
PART NUMBER: 2273-0780-950	
DESIGN BY: DLA	DATE: 4/11/18
DRAWING BY: DLA	DATE: 4/11/18
CHECKED BY: JMD	DATE: 4/11/18
APPROVED BY: AWH	DATE: 4/20/18
PROJECT ENG: AWH	SERIAL NUMBER: -

DEKKER
VACUUM TECHNOLOGIES, INC.

DESCRIPTION:
INDUSTRIAL CONTROL PANEL SIMPLEX
7.5HP CONTROLDEK 200V N12 W/DISC

DRAWING TYPE:
-

DWG NUMBER:
2018236-B

WEIGHT:
50 LBS

SCALE:
NONE

SHEET NUMBER:
4 OF 4