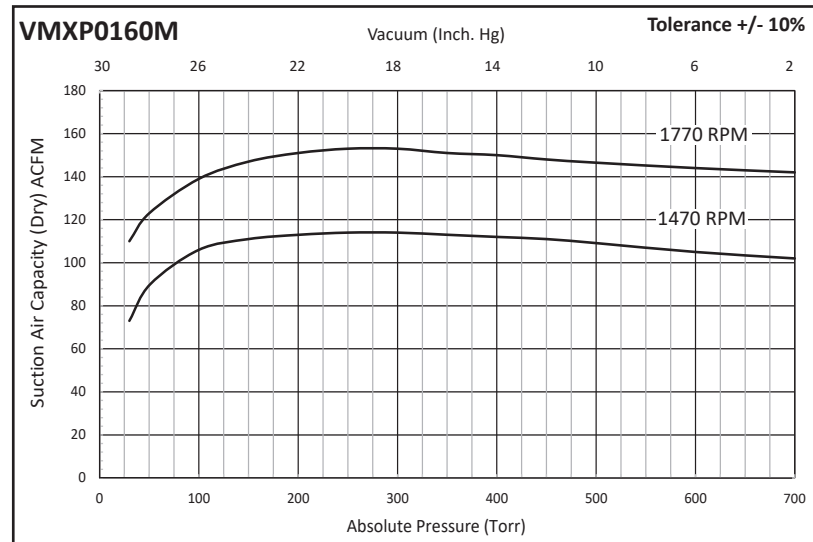


### Vmax<sup>PLUS</sup> FEATURES & BENEFITS:

- Rugged, high quality industrial system reaching a deep vacuum level of 29" HgV
- Ideal for CNC router applications, 20% greater hold-down force compared to dry rotary vane vacuum technology
- Minimal maintenance requirements, 10,000+ hours of reliable, efficient vacuum use
- Extremely low operating noise level makes this system desirable in today's workplace
- Compact design, ease of access to interior for maintenance
- Inlet filter, vacuum relief valve and internal seal scavenge line as standard for woodworking applications
- Tolerant of carryover of soft solids and/or minimal amounts of liquids without damaging internal parts of the pump
- Air-cooled heat exchanger ensures continuous operation over full vacuum range without overheating
- Only system on the market with a full 3-year warranty
- Vmax<sup>PLUS</sup> systems are available in multiplex configurations, stacked upright for space-savings

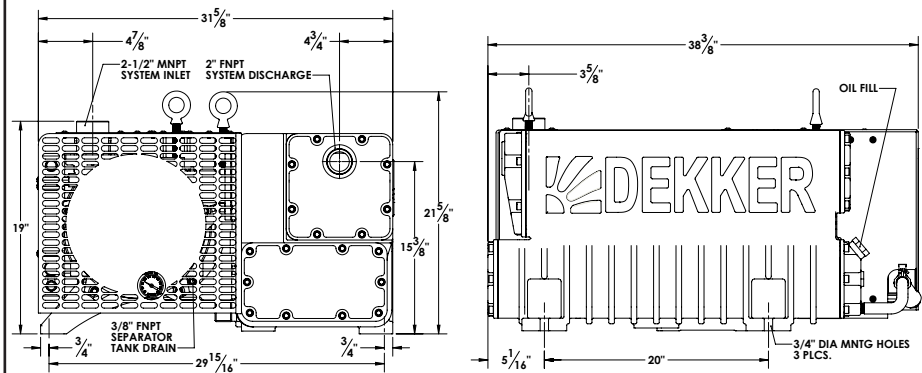


### PERFORMANCE CHARACTERISTICS

Nominal Capacity: 155CFM/263m<sup>3</sup>/hr  
 Motor: 60Hz/10Hp/7.5kW | 50Hz/7.5Hp/5.5kW  
 Speed: 1770/1470 RPM  
 Maximum Vacuum: 29" Hg/982mbar  
 Weight (approximate): 644Lbs/293Kg  
 Operating Temperature: 160°F/71°C  
 Maximum Gas Inlet Temperature: 212°F/100°C  
 Maximum Noise Level (at 3 feet): 76dBA  
 Oil Capacity: 6Gal/23Ltr

Performance based on atmospheric pressure equal to 29.92" Hg - 1013mbarA.

### VMXP0160M

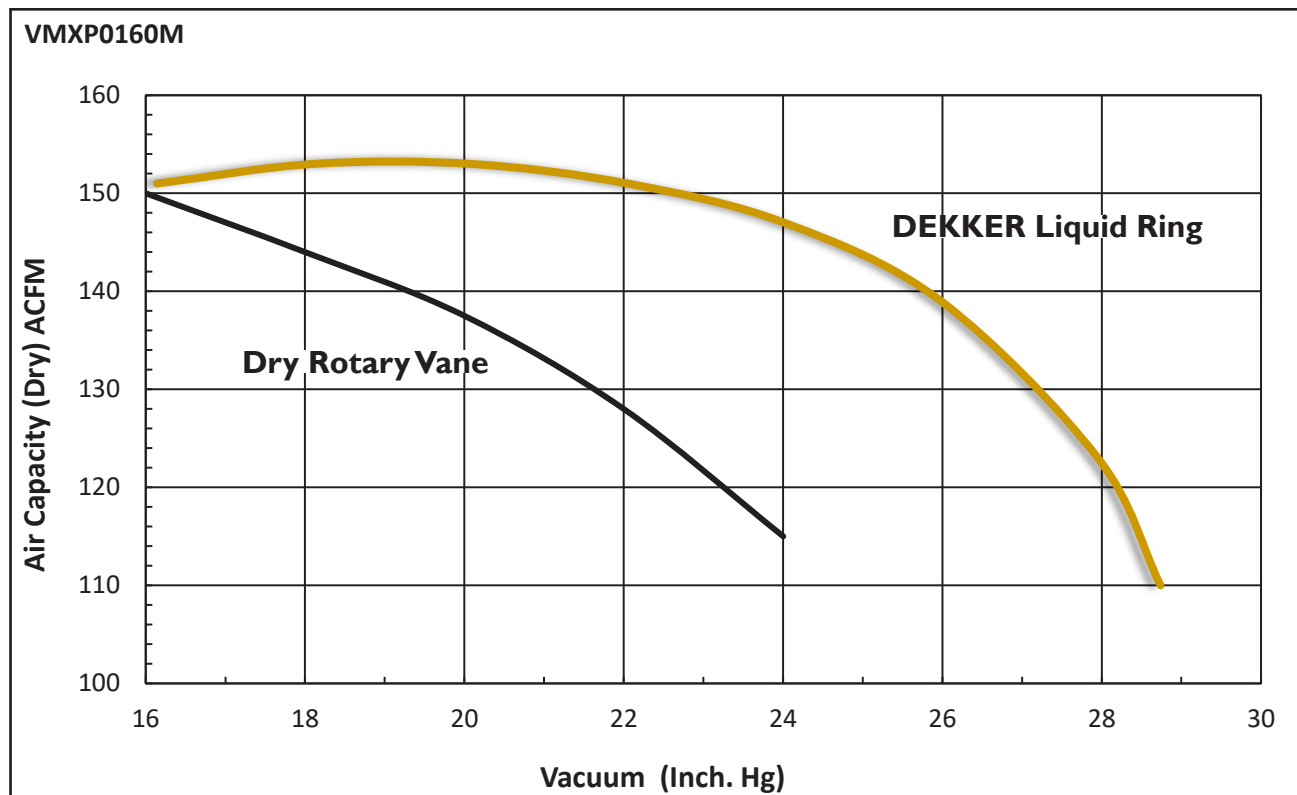


Information is subject to change without notice.



DEKKER performance under pressure eliminates parts slippage. DEKKER Vacuum's Vmax oil-sealed liquid ring vacuum pumps are proven to outperform the competition by achieving deep vacuum level and higher capacity. The higher the vacuum, the greater the pressure differential – which delivers superior, sustained hold-down force for your CNC router table.

The data below compares the nominal capacity of a dry rotary vane vacuum pump to our oil-sealed liquid ring vacuum pump. The performance of our Vmax<sup>PLUS</sup> at 24" Hg reaches 145 CFM, while a dry rotary vane vacuum pump reaches only a mere 115 CFM. Your CNC router requires a level of power that only DEKKER can deliver!



	DEKKER Liquid Ring	Dry Rotary Vane
Nominal Capacity:	155 CFM	169 CFM
Maximum Vacuum:	29" Hg	23.6" Hg
Weight:	644Lbs	730Lbs
Operating Temperature:	160°F	250°F
Maximum Gas Inlet Temperature:	212°F	68°F
Maximum Noise Level (at 3 feet):	76dBA	85dBA
Hold-Down Force (3'x5' work piece):	30,758 lbs.	25,034 lbs.
Operating Hours before Maintenance:	10,000+ hours	6,000 hours

Performance based on atmospheric pressure equal to 29.92" Hg - 1013mbarA.