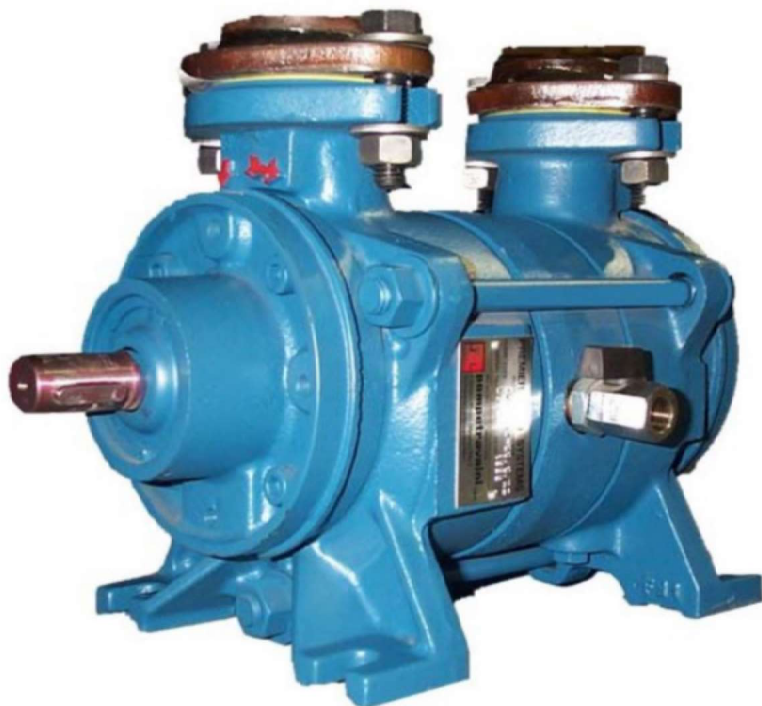


**TRHE32
Two-Stage
Liquid Ring Vacuum Pump**



200 Newsome Drive
Yorktown, VA 23693
1-800-535-4243
www.Travaini.com



Pressure Range	25 to 760 TORR
Capacity	2.7 to 35 CFM
Features	Two stage vacuum pump with external sealed bearings
Shaft Sealing Options	Mechanical seals (Double mechanical seals optional)
Options	Bareshaft pump Coupled to electric motor Monoblock with electric motor
Optional Accessories	Available as a component in larger assembly

Technical Data

PUMP TYPE		TRHE32-4	TRHE32-20	TRHE32-45	TRHE32-60
Speed	RPM	1750	3500	3500	3500
Motor - installed power	HP	0.75	2	3	5
Avg. service liquid flow	GPM	0.8	1.3	1.3	3.1
Noise level at 150 Torr	dB(A)	68	69	69	69
Min. suction pressure	Torr	55	30	30	25

Standard Materials of Construction**

Part No.	Description	RZ	A3
106	Suction casing	Cast iron	Stainless steel AISI 316
107	Discharge casing		
110	Impeller housing		
210	Shaft	Stainless steel AISI 420	
357	Bearing housing	Cast iron	
230	Impeller	Stainless steel AISI 316	

Model Designation

TRHE32-60/C-M/RA	
T	Travaini manufacturer
R	Liquid ring pump
H	Two stage Pump
E	Design revision
32	Flange size (mm)
60	Nominal capacity (m ³ /hr)
C	Shaft sealing: C = Mechanical seal C2=Double mechanical seal
RA	Materials of construction (see table)

**Special materials available upon request

-Request for information on our WATERSEAL and DYNASEAL engineered vacuum systems

-For further information please consult Travaini Pumps USA.

REF:	JGJ/RR	Date	2/4/2015	Nº:	100658.000
------	--------	------	----------	-----	------------