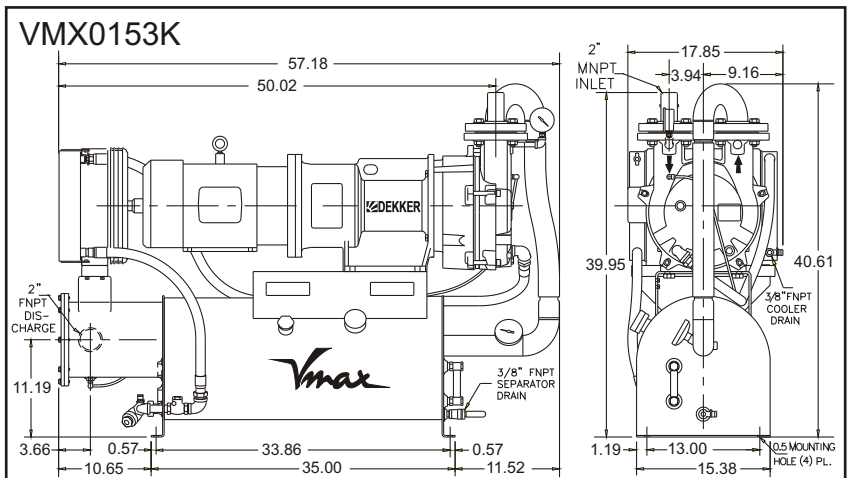
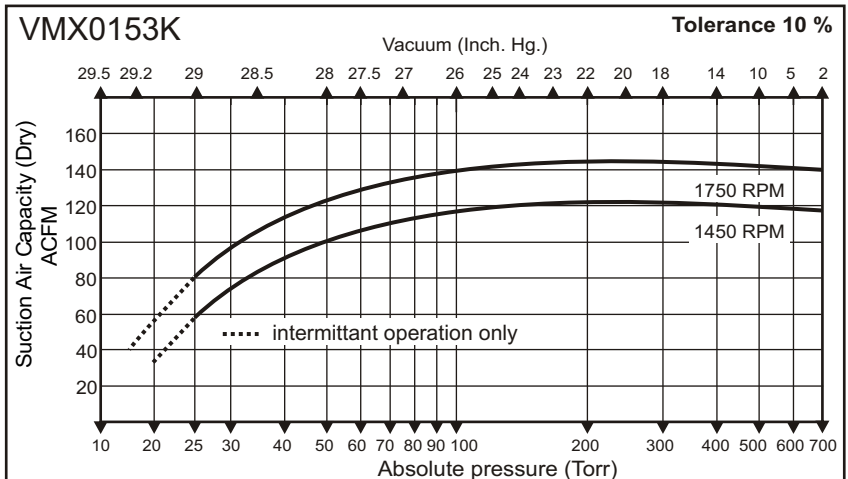
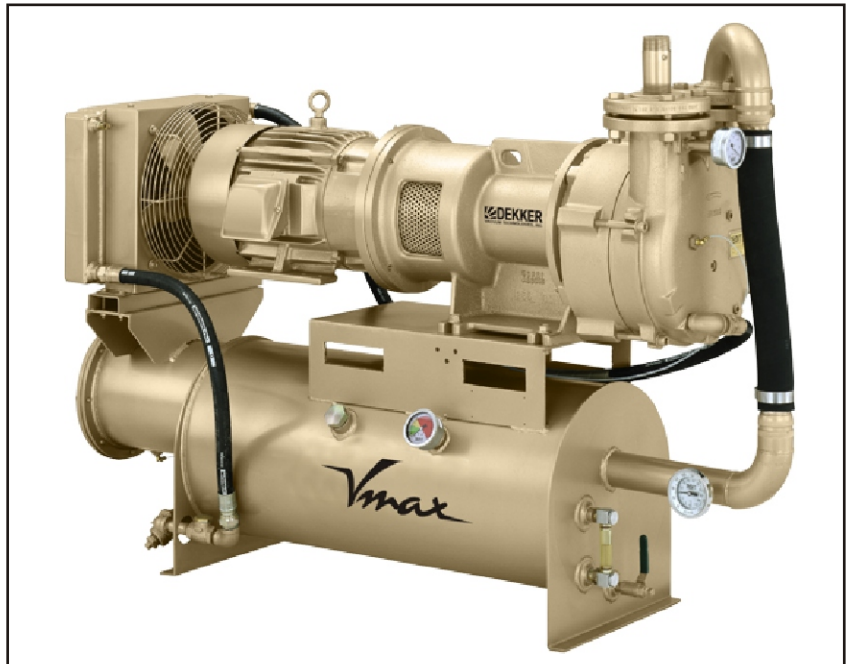


Why more and more customers are switching to the *Vmax* system:

- ✓ The only system on the market with a **full 3-year warranty!**
- ✓ Patented, **high-efficiency DX-5 separator** eliminates oil carry-over concerns.
- ✓ **Sturdy bearing pedestal** mounts to standard **NEMA C-face motor**.
- ✓ Rugged, **high-quality, industrial system**, offering years of **trouble free operation**.
- ✓ **Extended-life seal-fluid** is not used as a lubricant. Change interval is not critical, resulting in a minimum of **10,000 hours of continuous operation**.
- ✓ **Direct drive at low speed** (1750RPM) eliminates the use of V-belts, resulting in very **low maintenance and zero downtime**.
- ✓ **Extremely low operating noise** level makes this system desirable in today's workplace.
- ✓ **Continuous operation over the full vacuum range** without overheating.
- ✓ **Carry-over** of soft solids and/or minimal amounts of liquid **does not cause damage** to the internal parts of the pump.
- ✓ **Air-cooled design** is **standard** with water-cooling available at no extra charge.
- ✓ Improved **compact design**.
- ✓ Now available with optional **Variable Frequency Drive**, resulting in lower power consumption.



Performance Characteristics

Nominal capacity: 150CFM
 Motor: 50Hz/5.5kW/7.5HP - 60Hz/7.5kW/10HP
 Speed: 1450/1750RPM
 Maximum vacuum: 29"Hg/982mbar
 Weight (approximate): 350Kg/770Lbs
 Maximum gas inlet temperature: 212°F/100°C
 Maximum noise level (at 3 feet): 76dBA
 Oil capacity (approximate): 26Ltr/7 GAL
Performance based on atmospheric pressure equal to 29.92"Hg/1013mbarA

Information contained in this document is for reference only. Subject to change without notice.

STANDARD SYSTEM SPECIFICATION

Heavy Duty Liquid Ring Oil-sealed Vacuum Pump System Industrial Simplex

System Model No.	RPM	Pump Model No.	Pump Mat. Of Constr.	Nom. Cap. ACFM	Max. Vac. "Hg	HP
VMX0153KA1-01	1750	DV0150D-KA3	CI/CI/316SS	150	29	10

CI/CI/316SS : cast iron casing/cast iron portplate/316SS, Viton mechanical shaft seal.

PUMP ASSEMBLY:

- 1 DEKKER Titan single-stage liquid ring vacuum pump

STANDARD SYSTEM COMPONENTS:

- 1 Electric Motor TEFC, 230/460 Volt, 3phase, premium efficient, XP, Class 1, Div. 2, Group D
- 1 Flexible coupling
- 1 Patented DX5 discharging separator-reservoir with 5-stage air/oil separation, including coalescing filter
- 1 Seal-fluid isolation valve
- 1 Y-strainer
- 1 Seal line check valve
- 1 Separator drain valve
- 1 Separator sight-level gauge
- 1 Air-cooled, heat exchanger
- 1 Inlet check valve
- 1 Set of hydraulic hose seal-fluid line
- 1 Full charge of Vmaxol sealing fluid
- 1 Temperature Gauge
- 1 Vacuum Gauge
- 1 Pressure Gauge

SYSTEM ADDERS:

- 1 Level Switch - Low, unwired (Nema 7)
- 1 Level Switch - High, unwired (Nema 7)
- 1 Temp Control Valve
- 1 Inlet Filter
- 1 Vacuum Relief Valve

Electrical Provided by Customer

All systems will include all inter-connecting piping and wiring. The complete system will be given a mechanical running test to insure that all of the components function properly.