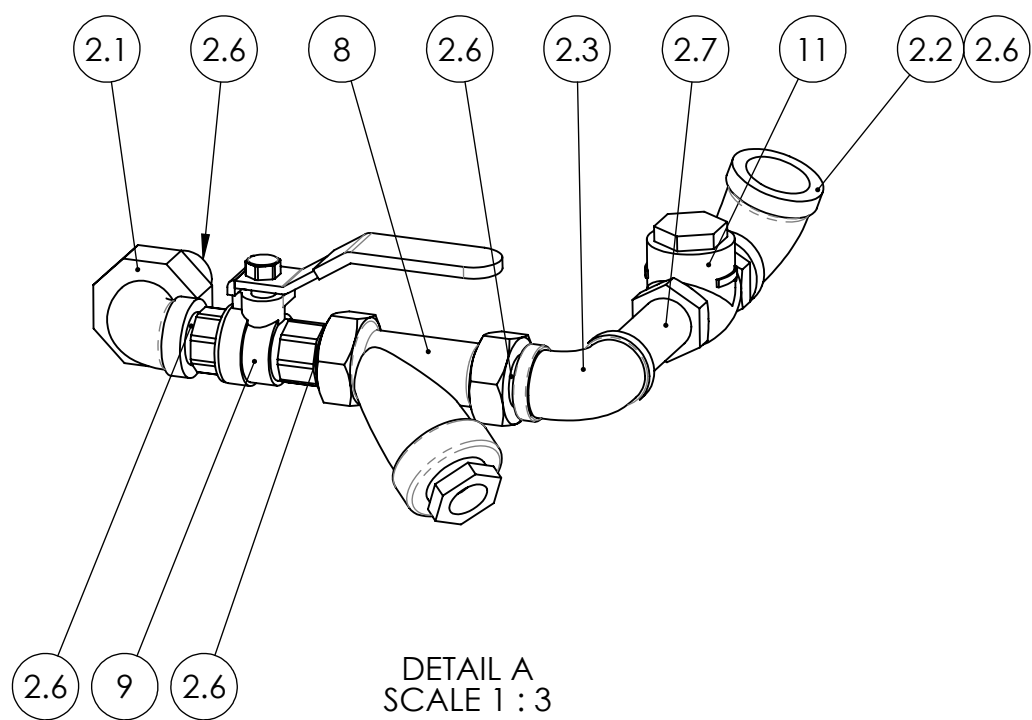
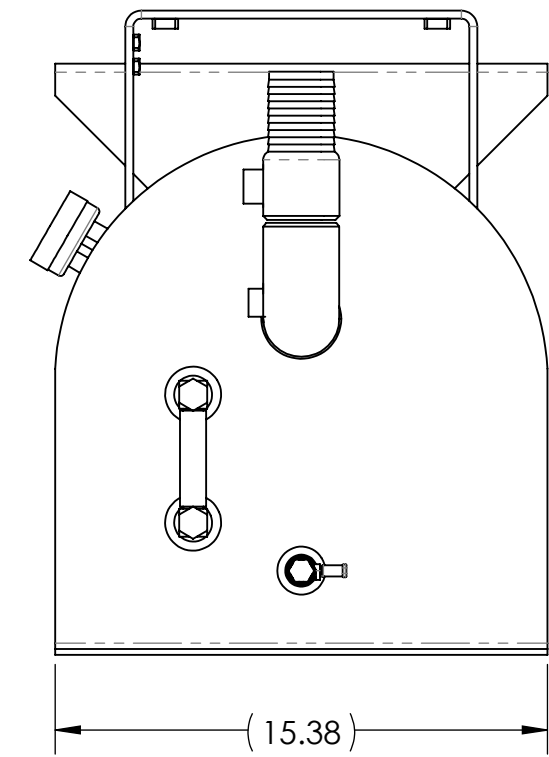
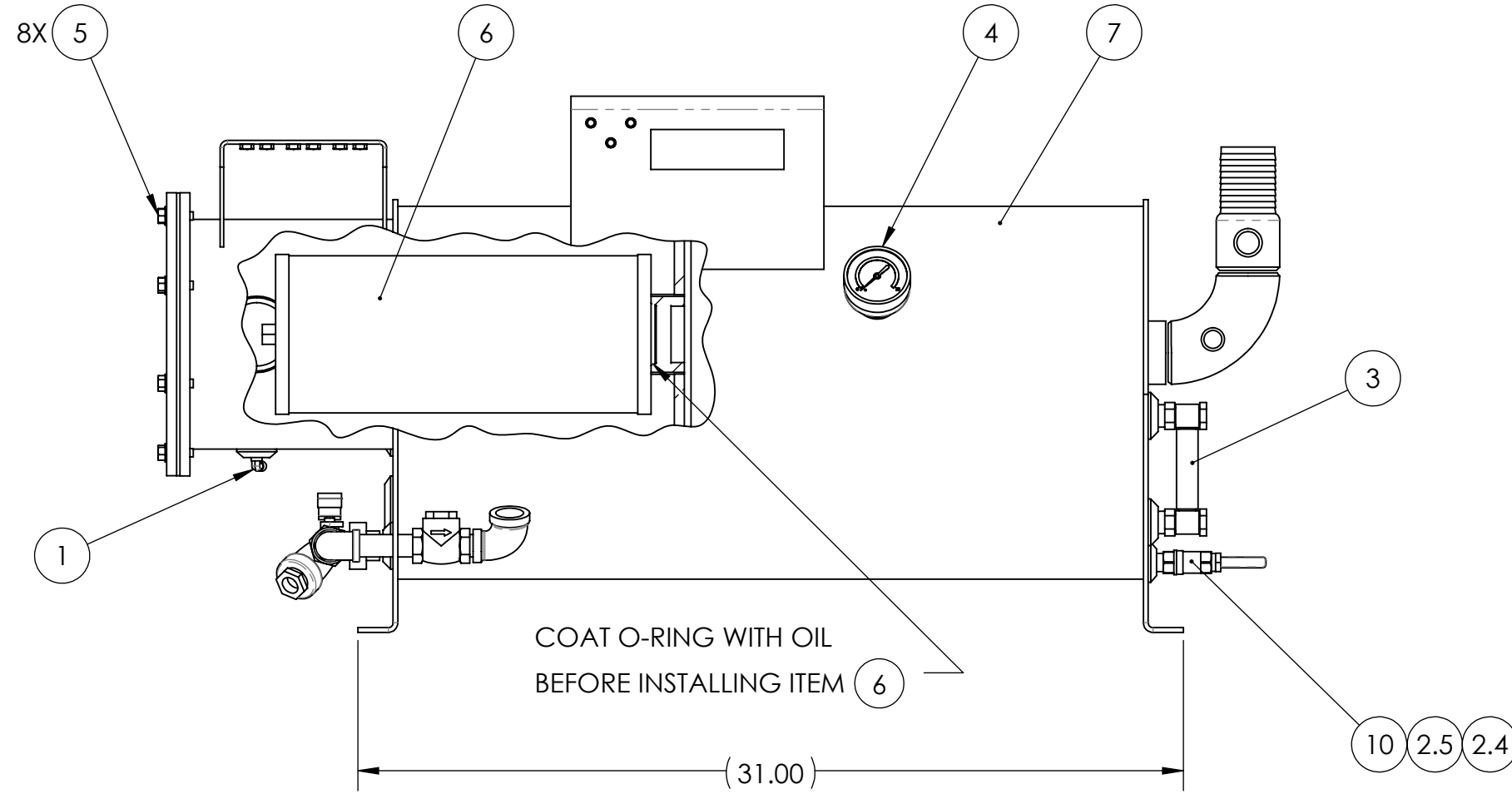
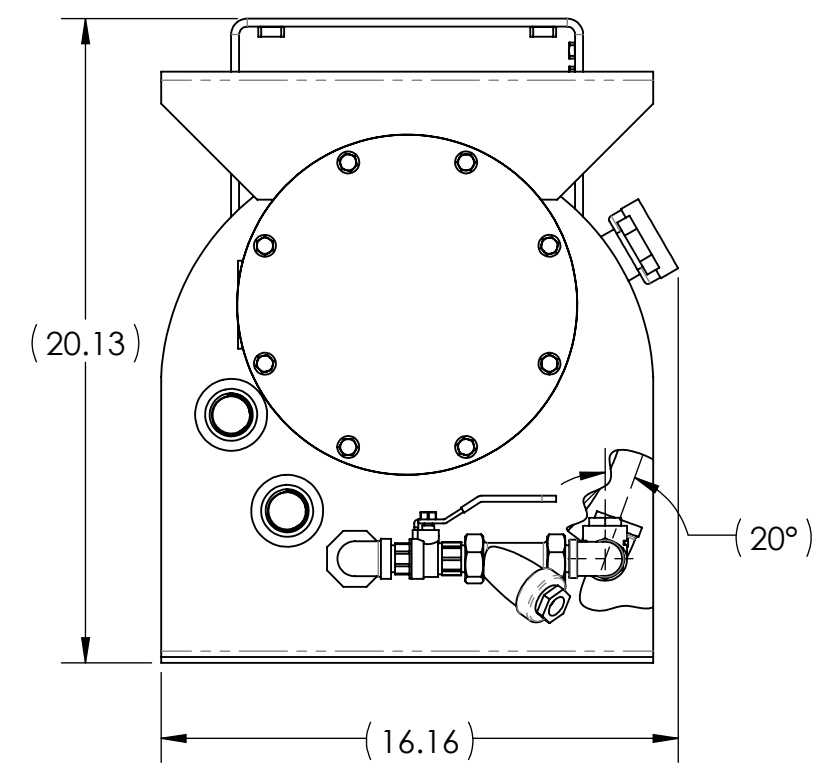
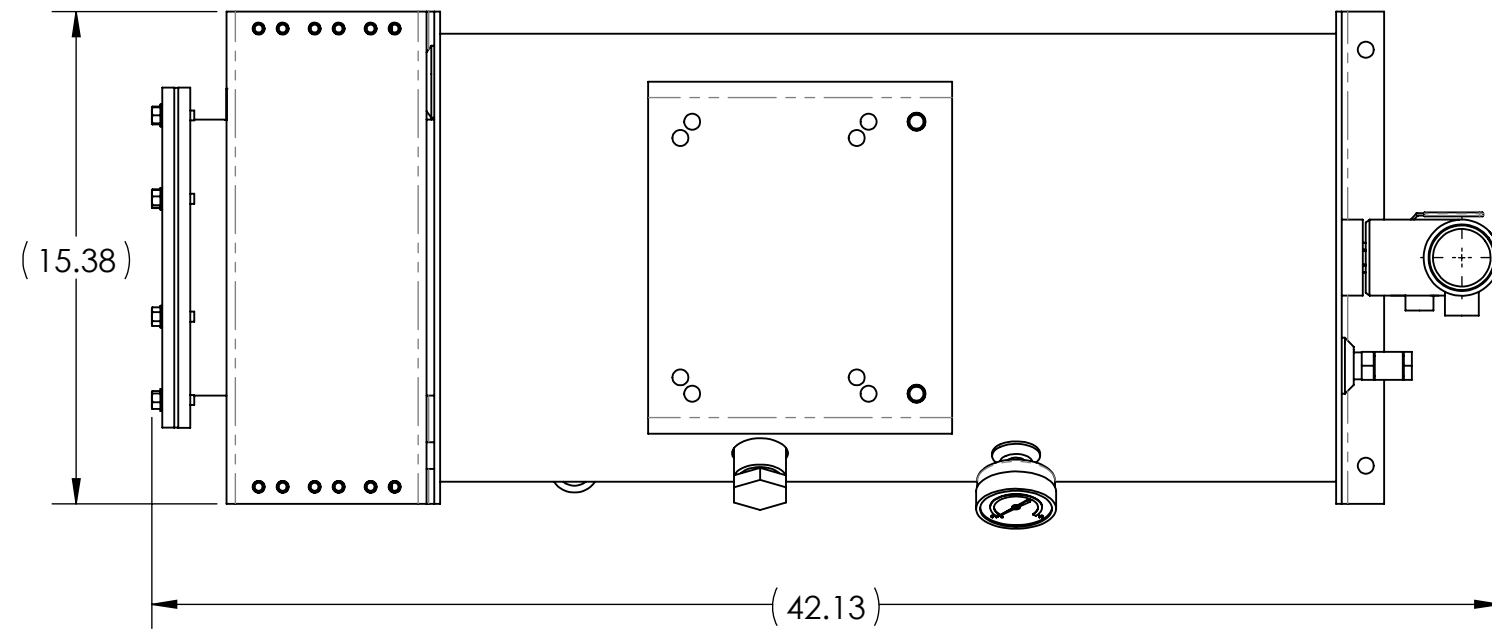


SCALE: 1:8



DETAIL A
SCALE 1:3
TANK HIDDEN

6840-2002-125			
ITEM NO.	QTY.	DESCRIPTION	PART NUMBER
1	1	FTNG 90° .13"MNPTX.13" TUBE BRS PUSH	3039-0013-001
2	1	PIPING KIT #2- TANK/DRAIN ASSEMBLY	3180-VMX02-000
2.1	1	ELBOW UNION .50" FNPT 90° MI	3006-0050-025
2.2	1	ELBOW 90° 150# .75" X .50"	3010-0705-025
2.3	1	ELBOW .50" 90°	3012-0050-025
2.4	1	PLUG, SQ HD CS .38" MNPT	3085-0037-025
2.5	1	NIPPLE .38"MNPT X CLOSE CS	3086-0300-025
2.6	5	NIPPLE 5.0"MNPT X CLOSE	3086-0500-025
2.7	1	NIPPLE 5.0"MNPT X 3.0 LG.	3086-0530-025
3	1	GAUGE LVL .5" MNPT 6" LG AL/BRS/VIT	3615-0050-000
4	1	GAUGE PRES 0-15PSI 2.5" DIAL FILLED	3625-0025-000
5	8	BOLT HEX HEAD 5/16-18 X 1.0"LG WHIZ	3800-3110-001
6	1	SEP ELMNT 10HP VERT/HORZ THREAD	6300-0614-000
7	1	SEPARATOR OIL FR CS VMX0103/0153MA	6410-2002-124
8	1	STRAINER Y .5" FNPT CI/304	6770-0050-000
9	1	VLV BALL .5"FNPT FP 2-PC BRZ/TF	7302-0050-000
10	1	VLV BALL .38" SP 2-PC THD BRZ/TF	7304-0038-000
11	1	VLV SWING CHECK .5" THD FNPT BRS/BN	7320-0050-002

REVISIONS					
REV.	DESCRIPTION	DATE	DWG	ERP	APP

TOLERANCES DIMENSIONS ARE IN INCHES UNLESS OTHERWISE SPECIFIED IN DRAWING DECIMAL ± .50" FRACTIONAL ± 1/2" ANGULAR ± .50°	MODEL NO. 6840-2002-125		
	DESIGN BY: KEC		DATE: 04/26/19
	DRAWING BY: KEC		DATE: 04/26/19
	CHECKED BY: WLH		DATE: 04/26/19
THIRD ANGLE PROJECTION 	APPROVED BY: RHC	DATE: 05/02/19	
THIS PRINT IS PROPERTY OF DEKKER VACUUM TECHNOLOGIES, INC. AND MAY NOT BE GIVEN TO ANY OTHER CONCERN WITHOUT THE CONSENT OF DEKKER VACUUM TECHNOLOGIES, INC.	REVIEWED BY: DATE:	DESCRIPTION SUB ASSY SEPARATOR VMX0103/153MA DRAWING TYPE PRODUCTION DWG NO. 2002125 SHEET NO. 1 OF 1 WEIGHT: 188.14 LB SCALE: 1:6	