

BALDOR • RELIANCE

Customer information packet

EM2535T

30HP, 1775RPM, 3PH, 60HZ, 286T, 4060M, OPSB, F1

Specifications

| | |
|--------------------------------|--|
| Enclosure | OPSB |
| Frame | 286T |
| Frame Material | Steel |
| Frequency | 60.00 Hz |
| Motor Letter Type | Three Phase |
| Output @ Frequency | 30.000 HP @ 60 HZ |
| Phase | 3 |
| Synchronous Speed @ Frequency | 1800 RPM @ 60 HZ |
| Voltage @ Frequency | 460.0 V @ 60 HZ 230.0 V @ 60 HZ |
| Agency Approvals | CSA EEV NEMA PREMIUM NEMA_PREMIUM UR |
| Ambient Temperature | 40 °C |
| Auxillary Box | No Auxillary Box |
| Auxillary Box Lead Termination | None |
| Base Indicator | Rigid |
| Bearing Grease Type | Polyrex EM (-20F +300F) |
| Blower | None |
| Current @ Voltage | 76.000 A @ 208.0 V 72.000 A @ 230.0 V 36.000 A @ 460.0 V |
| Design Code | A |
| Drip Cover | No Drip Cover |
| Duty Rating | CONT |
| Efficiency @ 100% Load | 94.1 % |
| Electrically Isolated Bearing | Not Electrically Isolated |
| Feedback Device | NO FEEDBACK |
| Front Face Code | Standard |
| Front Shaft Indicator | None |
| Heater Indicator | No Heater |

Part detail

| | |
|--------------|------------|
| Revision | V |
| Type | AC |
| Mech. spec. | 40G48 |
| Base | |
| Status | PRD/A |
| Elec. spec. | 40WGX339 |
| Layout | 40LYG048 |
| Eff. date | 09-10-2024 |
| CD Diagram | CD0005 |
| Poles | 04 |
| Leads | 9#8 |
| Proprietary | False |
| Created date | 03-22-2016 |

| | |
|--------------------------------------|-----------------------|
| High Voltage Full Load Amps | 36.0 a |
| Insulation Class | F |
| Inverter Code | Inverter Ready |
| IP Rating | NONE |
| KVA Code | H |
| Lifting Lugs | Standard Lifting Lugs |
| Locked Bearing Indicator | No Locked Bearing |
| Motor Lead Exit | Ko Box |
| Motor Lead Quantity/Wire Size | 9 @ 8 AWG |
| Motor Lead Termination | Flying Leads |
| Motor Standards | NEMA |
| Motor Type | 4060M |
| Mounting Arrangement | F1 |
| Number of Poles | 4 |
| Overall Length | 26.06 IN |
| Power Factor | 82 |
| Product Family | General Purpose |
| Pulley End Bearing Type | Ball |
| Pulley Face Code | Standard |
| Pulley Shaft Indicator | Standard |
| Rodent Screen | None |
| Service Factor | 1.15 |
| Shaft Diameter | 1.875 IN |
| Shaft Extension Location | Pulley End |
| Shaft Ground Indicator | No Shaft Grounding |
| Shaft Rotation | Reversible |
| Shaft Slinger Indicator | No Slinger |
| Speed | 1775 rpm |
| Speed Code | Single Speed |
| Starting Method | Direct on line |
| Thermal Device - Bearing | None |
| Thermal Device - Winding | None |
| Vibration Sensor Indicator | No Vibration Sensor |
| Winding Thermal 1 | None |

Winding Thermal 2

None

Nameplate

| NP3554LUA | | | | | | | | | | |
|------------------|---------------------------|---------------|--------------------------------|----------------------------------|----------------|------------|----------------|-------------|--|-------------|
| CAT.NO. | EM2535T | | | P/N | | | | ENCL | | OPSB |
| SPEC. | 40G048X339 | CC | 010A | FRAME | 286T | | SER.NO. | | | |
| HP | 30 | | CLASS | F | HZ | 60 | | | | |
| RPM | 1775 | | PH | 3 | DES | A | | | | |
| VOLTS | 230/460 | | CODE | H | ODE BRG | 6309 | DE BRG | 6311 | | |
| AMPS | 74/37 | | | | | | | | | |
| RATING | 40C AMB-CONT | | NEMA-NOM-EFF | 94.1 | GREASE | POLYREX EM | | | | |
| PF | 80 | SER.F. | 1.15 | CT30-60(2:1) VT3-60(20:1) | | | | | | |
| USABLE AT | 50HZ 30HP 190/380V 86/43A | | | SF 1.0 | | | | | | |
| HTR-VOLTS | HTR-AMPS | | MAX. SPACE HEATER TEMP. | | | | | | | |

Accessories

| Part number | Description | Multiplier |
|--------------------|--------------------|-------------------|
| 40-1400 | C FACE KIT | A8 |

AC Induction Motor Performance Data

Record # 56978

Typical performance - not guaranteed values

| Winding: 40WGX339-R001 | | Type: 4060M | Enclosure: OPSB | |
|------------------------|-------------------|---------------------------|--|--|
| Nameplate Data | | | 460 V, 60 Hz: High Voltage Connection | |
| Rated Output (HP) | 30 | Full Load Torque | 88.8 LB-FT | |
| Volts | 230/460 | Start Configuration | direct on line | |
| Full Load Amps | 72/36 | Breakdown Torque | 280 LB-FT | |
| R.P.M. | 1775 | Pull-up Torque | 130 LB-FT | |
| Hz | 60 Phase | Locked-rotor Torque | 161 LB-FT | |
| NEMA Design Code | A KVA Code | Starting Current | 252 A | |
| Service Factor (S.F.) | 1.15 | No-load Current | 15.4 A | |
| NEMA Nom. Eff. | 94.1 Power Factor | Line-line Res. @ 25°C | 0.22043 Ω | |
| Rating - Duty | 40C AMB-CONT | Temp. Rise @ Rated Load | 29°C | |
| S.F. Amps | | Temp. Rise @ S.F. Load | 35°C | |
| | | Locked-rotor Power Factor | 31.4 | |

Load Characteristics 460 V, 60 Hz, 30 HP

| % of Rated Load | 25 | 50 | 75 | 100 | 125 | 150 | S.F. |
|-----------------|--------|--------|--------|--------|--------|--------|------|
| Power Factor | 44 | 67 | 77 | 82 | 85 | 85 | 84 |
| Efficiency | 90.5 | 93.8 | 94.4 | 94.3 | 93.9 | 93.2 | 94.1 |
| Speed | 1793.6 | 1788.1 | 1782.5 | 1776.9 | 1770.4 | 1763.1 | 1773 |
| Line amperes | 17.7 | 22.5 | 29 | 36.3 | 44.3 | 53 | 41.1 |

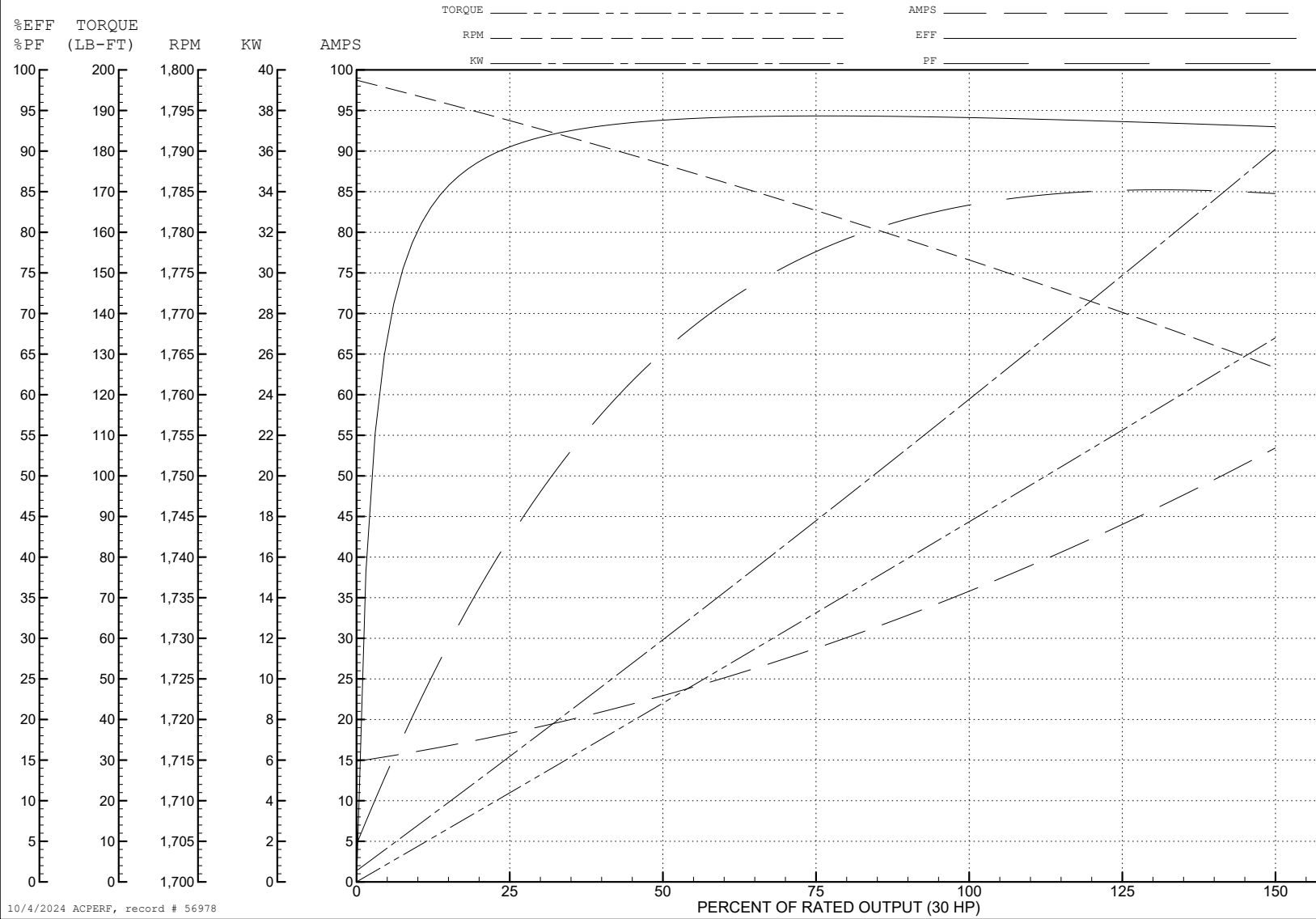
ABB Motors and Mechanical Inc.

WINDING # 40WGx339

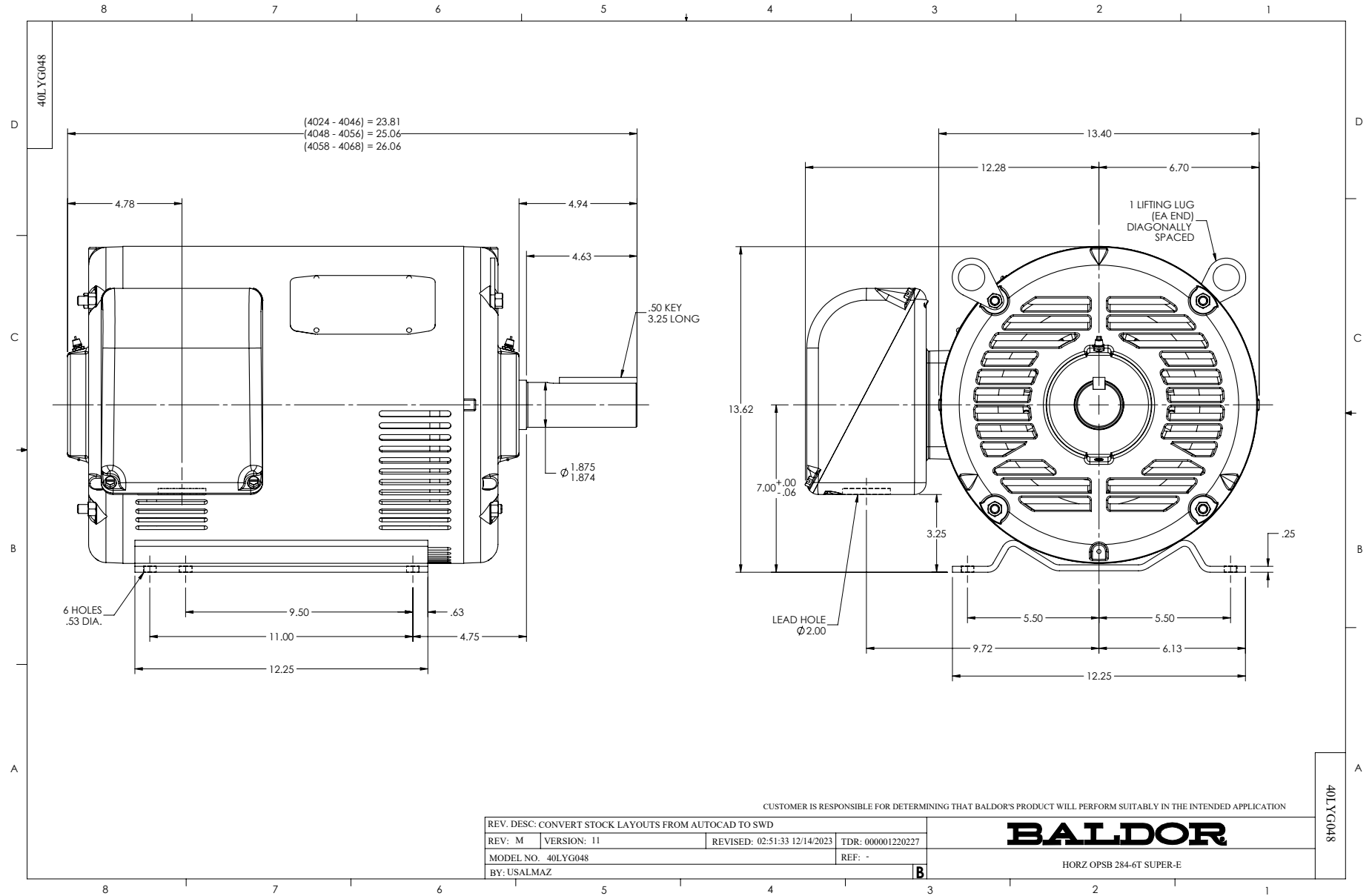
Typical performance - not guaranteed values.

30 HP 3 PH 60 HZ 1775 RPM 460 V 4060M

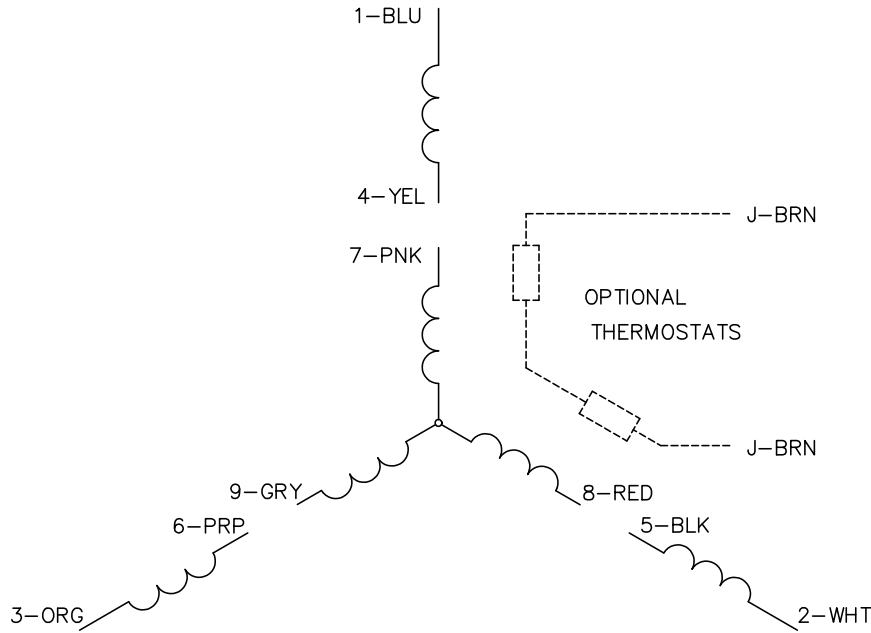
TORQUES (LB-FT): PO=280 PU=130 LR=161 LRA=252



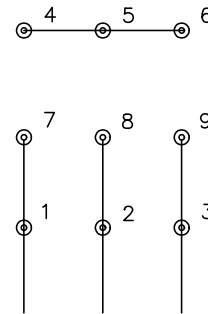
10/4/2024 ACPERF, record # 56978



CD0005

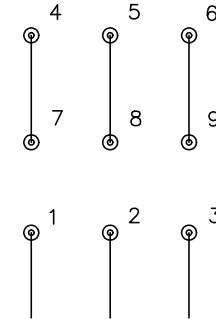


LOW VOLTAGE
(2Y)



LINE

HIGH VOLTAGE
(1Y)



LINE

NOTES:

1. INTERCHANGE ANY TWO LINE LEADS TO REVERSE ROTATION.
2. OPTIONAL THERMOSTATS ARE PROVIDED WHEN SPECIFIED.
3. ACTUAL NUMBER OF INTERNAL PARALLEL CIRCUITS MAY BE A MULTIPLE OF THOSE SHOWN ABOVE.
4. LEAD COLORS ARE OPTIONAL. LEADS MUST ALWAYS BE NUMBERED AS SHOWN.

CD0005

| | | | |
|---|---------|-------------------------|--------------|
| REV. DESC: REVISE TO SHOW OPTIONAL COLORS | | | |
| REV. LTR: E | BY: JLP | REVISED: 01/19/99 10:15 | TDR: 0171435 |
| S00000 | | FILE: AAA00005140 | MDL: - |
| | | MTL: - | |

BALDOR ELECTRIC Co.

3PH, DV, 9 LEADS