



---

# Customer information packet

## EM3313T

10HP, 1770RPM, 3PH, 60HZ, 215T, 3742M, OPSB, F1

Class - None

Division - Not Applicable

## Specifications

Enclosure	OPSB
Frame	215T
Frame Material	Steel
Frequency	60.00 Hz
Haz Area Class and Group	None
Haz Area Division	Not Applicable
Motor Letter Type	Three Phase
Output @ Frequency	10.000 HP @ 60 HZ
Phase	3
Synchronous Speed @ Frequency	1800 RPM @ 60 HZ
Voltage @ Frequency	230.0 V @ 60 HZ 460.0 V @ 60 HZ
Agency Approvals	CSA EEV NEMA PREMIUM NEMA_PREMIUM UR
Ambient Temperature	40 °C
Auxillary Box	No Auxillary Box
Auxillary Box Lead Termination	None
Base Indicator	Rigid
Bearing Grease Type	Polyrex EM (-20F +300F)
Blower	None
Current @ Voltage	26.400 A @ 208.0 V 25.000 A @ 230.0 V 12.500 A @ 460.0 V
Design Code	B
Drip Cover	No Drip Cover
Duty Rating	CONT
Efficiency @ 100% Load	91.7 %
Electrically Isolated Bearing	Not Electrically Isolated
Feedback Device	NO FEEDBACK
Front Shaft Indicator	None

## Part detail

Revision	F
Type	AC
Mech. spec.	37F614
Base	
Status	PRD/A
Elec. spec.	37WGL868
Layout	37LYF614
Eff. date	06-11-2024
CD Diagram	CD0005
Poles	04
Leads	9#14
Proprietary	False
Created date	11-11-2020

Heater Indicator	No Heater
High Voltage Full Load Amps	12.5 a
Insulation Class	F
Inverter Code	Inverter Ready
KVA Code	H
Lifting Lugs	Standard Lifting Lugs
Locked Bearing Indicator	No Locked Bearing
Motor Lead Quantity/Wire Size	9 @ 14 AWG
Motor Lead Termination	Flying Leads
Motor Standards	NEMA
Motor Type	3742M
Mounting Arrangement	F1
Number of Poles	4
Overall Length	17.45 IN
Power Factor	82
Product Family	General Purpose
Pulley End Bearing Type	Ball
Pulley Face Code	Standard
Pulley Shaft Indicator	Standard
Rodent Screen	None
RoHS Status	ROHS COMPLIANT
Service Factor	1.15
Shaft Diameter	1.375 IN
Shaft Ground Indicator	No Shaft Grounding
Shaft Rotation	Reversible
Shaft Slinger Indicator	No Slinger
Speed	1770 rpm
Speed Code	Single Speed
Starting Method	Direct on line
Thermal Device - Bearing	None
Thermal Device - Winding	None
Vibration Sensor Indicator	No Vibration Sensor
Winding Thermal 1	None
Winding Thermal 2	None

**Nameplate**

**NP3553LUA**

<b>CAT.NO.</b>	EM3313T						
<b>SPEC.</b>	37F614L868						
<b>HP</b>	10						
<b>VOLTS</b>	230/460						
<b>AMPS</b>	25/12.5						
<b>RPM</b>	1770						
<b>FRAME</b>	215T	<b>HZ</b>	60	<b>PH</b>	3		
<b>SF</b>	1.15	<b>CODE</b>	H	<b>DES</b>	B	<b>CLASS</b>	F
<b>NEMA NOM. EFF</b>	91.7	<b>PF</b>	82				
<b>RATING</b>	40C AMB-CONT						
<b>CC</b>	010A						
<b>ENCL</b>	OPSB	<b>SN</b>					
<b>DE</b>	6307	<b>ODE</b>	6206				
<b>VPWM INVERTER READY</b>							
<b>CT30-60(2:1) VT3-60(20:1)</b>							
<b>USABLE AT</b>	50HZ 7.5HP 190/380V 23.4/11.7A						SF1.0

**Accessories**

<b>Part number</b>	<b>Description</b>	<b>Multiplier</b>
37-1404	C FACE KIT	A8

**AC Induction Motor Performance Data**

Record # 85454

Preliminary Data Sheet

Winding: 37WGL868-RXXX		Type: 3742M	Enclosure: OPSB
<b>Nameplate Data</b>		<b>460 V, 60 Hz: High Voltage Connection</b>	
Rated Output (HP)	10	Full Load Torque	29.8 LB-FT
Volts	230/460	Start Configuration	direct on line
Full Load Amps	25.0/12.5	Breakdown Torque	101 LB-FT
R.P.M.	1770	Pull-up Torque	44.9 LB-FT
Hz	60 Phase	Locked-rotor Torque	56 LB-FT
NEMA Design Code	B KVA Code	Starting Current	88.6 A
Service Factor (S.F.)	1.15	No-load Current	5.31 A
NEMA Nom. Eff.	91.7 Power Factor	Line-line Res. @ 25°C	1.18 Ω
Rating - Duty	40C AMB-CONT	Temp. Rise @ Rated Load	35°C
S.F. Amps	28.0/14.0	Temp. Rise @ S.F. Load	44°C
		Locked-rotor Power Factor	42.6
		Rotor inertia	1.03 lb-ft <sup>2</sup>

**Load Characteristics 460 V, 60 Hz, 10 HP**

% of Rated Load	25	50	75	100	125	150	S.F.
Power Factor	45	67	77	82	84	85	84
Efficiency	86.7	91.3	92.1	91.7	90.9	89.6	91.1
Speed	1792	1785	1777	1769	1760	1750	1762
Line amperes	6.04	7.69	9.84	12.4	15.3	18.4	14.1

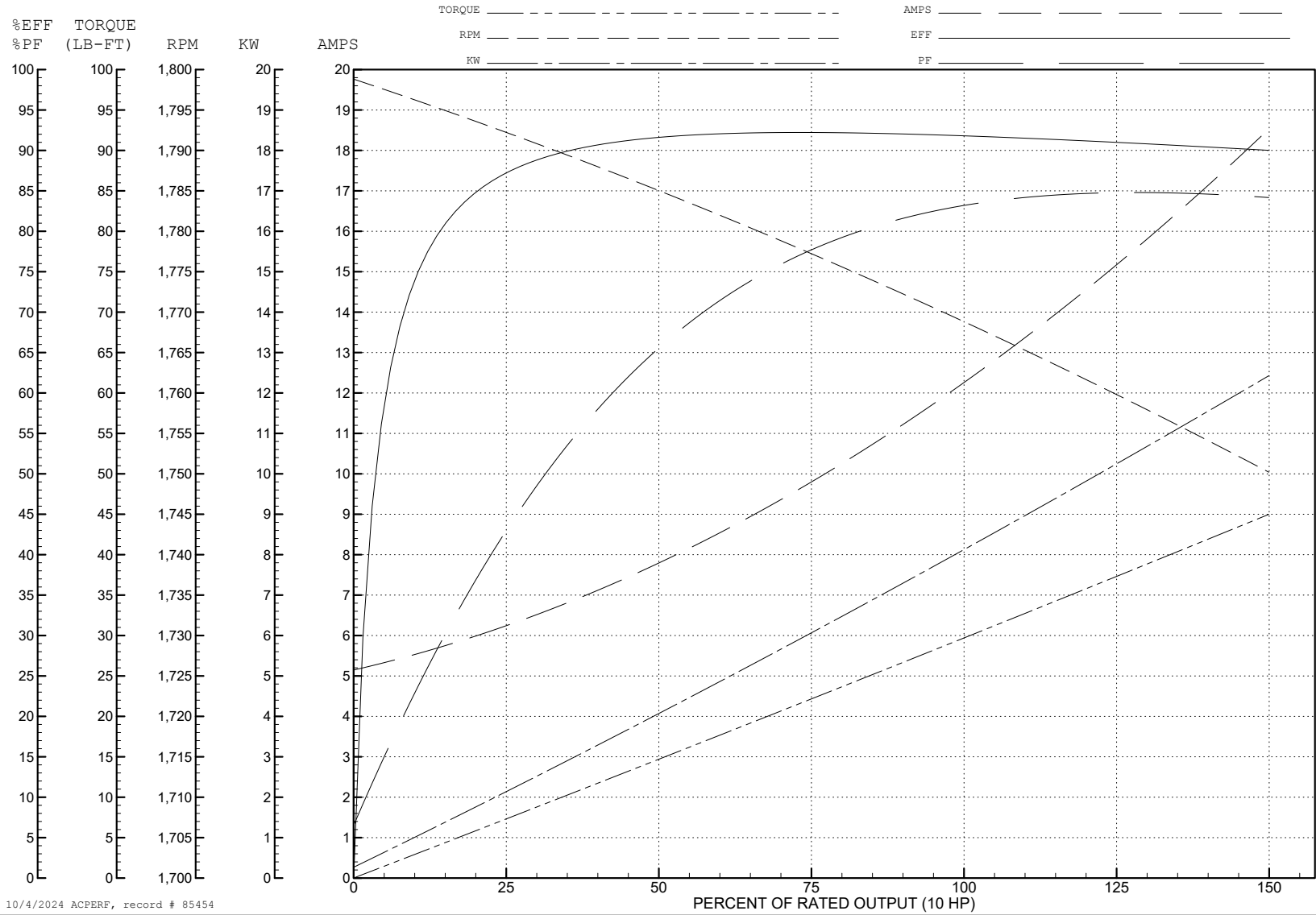
ABB Motors and Mechanical Inc.

WINDING # 37WGL868

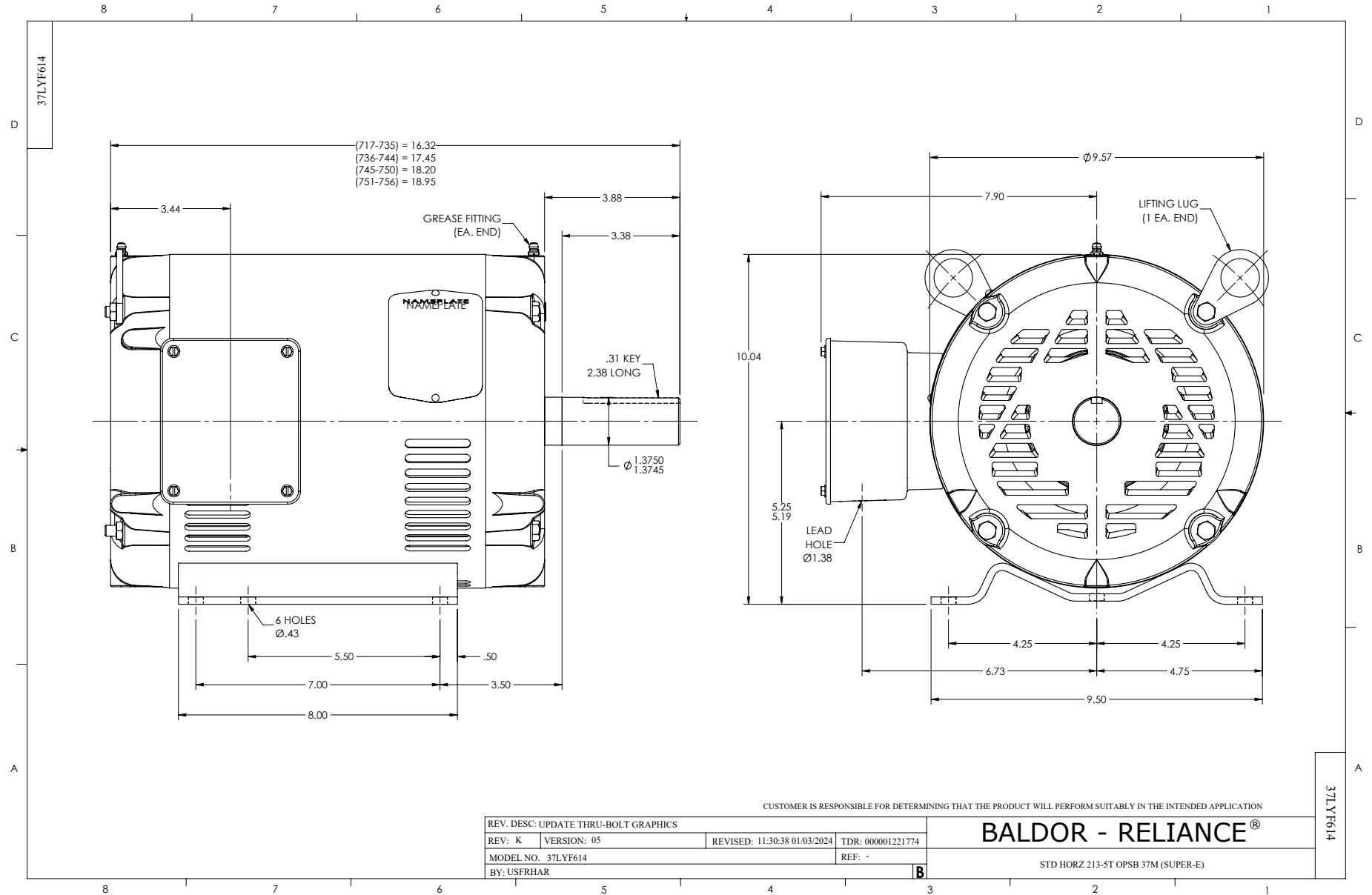
Typical performance - not guaranteed values.

10 HP 3 PH 60 HZ 1770 RPM 460 V 3742M

TORQUES (LB-FT): PO=101 PU=44.9 LR=56 LRA=88.6

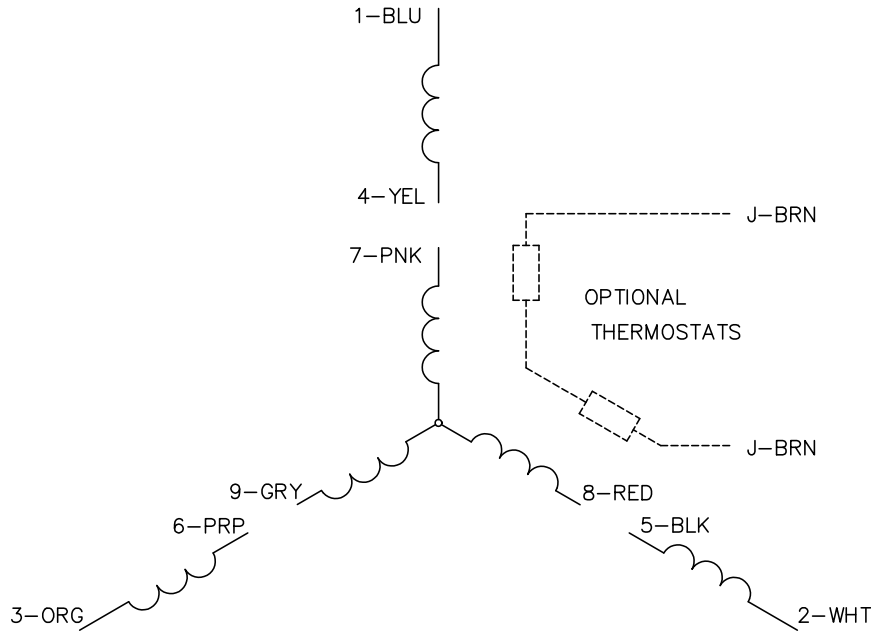


10/4/2024 ACPERF, record # 85454

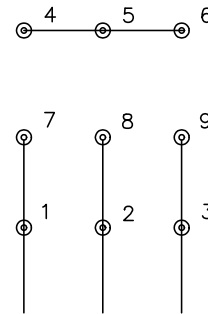




CD0005

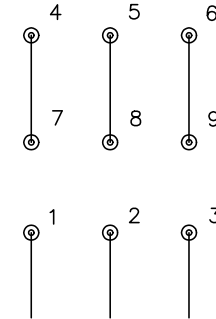


LOW VOLTAGE  
(2Y)



LINE

HIGH VOLTAGE  
(1Y)



LINE

NOTES:

1. INTERCHANGE ANY TWO LINE LEADS TO REVERSE ROTATION.
2. OPTIONAL THERMOSTATS ARE PROVIDED WHEN SPECIFIED.
3. ACTUAL NUMBER OF INTERNAL PARALLEL CIRCUITS MAY BE A MULTIPLE OF THOSE SHOWN ABOVE.
4. LEAD COLORS ARE OPTIONAL. LEADS MUST ALWAYS BE NUMBERED AS SHOWN.

CD0005

REV. DESC: REVISE TO SHOW OPTIONAL COLORS			
REV. LTR: E	BY: JLP	REVISED: 01/19/99 10:15	TDR: 0171435
S00000		FILE: AAA00005140	MDL: -
		MTL: -	

**BALDOR ELECTRIC Co.**

3PH, DV, 9 LEADS