



---

# Customer information packet

## EM2333T

15HP, 1765RPM, 3PH, 60HZ, 254T, 0944M, TEFC, F1

Class - None

Division - Not Applicable

## Specifications

|                                |  |
|--------------------------------|--|
| Enclosure                      | TEFC   |
| Frame                          | 254T   |
| Frame Material                 | Iron   |
| Frequency                      | 60.00 Hz   |
| Haz Area Class and Group       | None   |
| Haz Area Division              | Not Applicable   |
| Motor Letter Type              | Three Phase  |
| Output @ Frequency             | 15.000 HP @ 60 HZ  |
| Phase                          | 3  |
| Synchronous Speed @ Frequency  | 1800 RPM @ 60 HZ   |
| Voltage @ Frequency            | 230.0 V @ 60 HZ<br>460.0 V @ 60 HZ                             |
| Agency Approvals               | CSA EEV<br>NEMA PREMIUM<br>NEMA_PREMIUM<br>UR                  |
| Ambient Temperature            | 40 °C  |
| Auxillary Box                  | No Auxillary Box   |
| Auxillary Box Lead Termination | None   |
| Base Indicator                 | Rigid  |
| Bearing Grease Type            | Polyrex EM (-20F +300F)  |
| Blower                         | None   |
| Current @ Voltage              | 38.000 A @ 208.0 V<br>36.200 A @ 230.0 V<br>18.100 A @ 460.0 V |
| Design Code                    | A  |
| Drip Cover                     | No Drip Cover  |
| Duty Rating                    | CONT   |
| Efficiency @ 100% Load         | 92.4 %   |
| Electrically Isolated Bearing  | Not Electrically Isolated                                      |
| Feedback Device                | NO FEEDBACK  |
| Front Shaft Indicator          | None   |

## Part detail

|              |            |
|--------------|------------|
| Revision     | K          |
| Type         | AC         |
| Mech. spec.  | 09P11      |
| Base         |            |
| Status       | PRD/A      |
| Elec. spec.  | 09WGT597   |
| Layout       | 09LYP011   |
| Eff. date    | 03-19-2024 |
| CD Diagram   | CD0005     |
| Poles        | 04         |
| Leads        | 9#12       |
| Proprietary  | False      |
| Created date | 11-11-2020 |

|                               |                       |
|-------------------------------|-----------------------|
| Heater Indicator              | No Heater             |
| High Voltage Full Load Amps   | 18.1 a                |
| Insulation Class              | F                     |
| Inverter Code                 | Inverter Ready        |
| KVA Code                      | H                     |
| Lifting Lugs                  | Standard Lifting Lugs |
| Locked Bearing Indicator      | Locked Bearing        |
| Motor Lead Quantity/Wire Size | 9 @ 12 AWG            |
| Motor Lead Termination        | Flying Leads          |
| Motor Standards               | NEMA                  |
| Motor Type                    | 0944M                 |
| Mounting Arrangement          | F1                    |
| Number of Poles               | 4                     |
| Overall Length                | 23.36 IN              |
| Power Factor                  | 84                    |
| Product Family                | General Purpose       |
| Pulley End Bearing Type       | Ball                  |
| Pulley Face Code              | Standard              |
| Pulley Shaft Indicator        | Standard              |
| Rodent Screen                 | None                  |
| RoHS Status                   | ROHS COMPLIANT        |
| Service Factor                | 1.15                  |
| Shaft Diameter                | 1.625 IN              |
| Shaft Ground Indicator        | No Shaft Grounding    |
| Shaft Rotation                | Reversible            |
| Shaft Slinger Indicator       | Shaft Slinger         |
| Speed                         | 1765 rpm              |
| Speed Code                    | Single Speed          |
| Starting Method               | Direct on line        |
| Thermal Device - Bearing      | None                  |
| Thermal Device - Winding      | None                  |
| Vibration Sensor Indicator    | No Vibration Sensor   |
| Winding Thermal 1             | None                  |
| Winding Thermal 2             | None                  |

**Nameplate**

**NP3441LUA**

|                                  |                               |             |           |            |   |              |       |
|----------------------------------|-------------------------------|-------------|-----------|------------|---|--------------|-------|
| <b>CAT.NO.</b>                   | EM2333T                       |             |           |            |   |              |       |
| <b>SPEC</b>                      | 09P011T597G1                  |             |           |            |   |              |       |
| <b>HP</b>                        | 15                            |             |           |            |   |              |       |
| <b>VOLTS</b>                     | 230/460                       |             |           |            |   |              |       |
| <b>AMPS</b>                      | 36.2/18.1                     |             |           |            |   |              |       |
| <b>RPM</b>                       | 1765                          |             |           |            |   |              |       |
| <b>FRAME</b>                     | 254T                          |             | <b>HZ</b> | 60         |   | <b>PH</b>    | 3     |
| <b>SF</b>                        | 1.15                          | <b>CODE</b> | H         | <b>DES</b> | A | <b>CLASS</b> | F     |
| <b>NEMA NOM. EFF</b>             | 92.4                          | <b>PF</b>   | 84        |            |   |              |       |
| <b>RATING</b>                    | 40C AMB-CONT                  |             |           |            |   |              |       |
| <b>CC</b>                        | 010A                          |             |           |            |   |              |       |
| <b>ENCL</b>                      | TEFC                          | <b>SER</b>  |           |            |   |              |       |
| <b>DE</b>                        | 6309                          | <b>ODE</b>  | 6208      |            |   |              |       |
| <b>VPWM INVERTER READY</b>       | SFA 41/20.4                   |             |           |            |   |              |       |
| <b>CT6-60H(10:1)VT3-60H(20:1</b> | 50HZ 15HP 190/380V 42.2/21.1A |             |           |            |   |              | SF1.0 |

**Accessories**

| <b>Part number</b> | <b>Description</b> | <b>Multiplier</b> |
|--------------------|--------------------|-------------------|
| 09-1309            | C FACE KIT         | A8                |

**AC Induction Motor Performance Data**

Record # 93306

Typical performance - not guaranteed values

| Winding: 09WGT597-R001 |                   | Type: 0944M               | Enclosure: TEFC                                  |  |
|------------------------|-------------------|---------------------------|--|--|
| <b>Nameplate Data</b>  |                   |                           | <b>460 V, 60 Hz:<br/>High Voltage Connection</b> |  |
| Rated Output (HP)      | 15                | Full Load Torque          | 44.59 LB-FT                                      |  |
| Volts                  | 230/460           | Start Configuration       | direct on line                                   |  |
| Full Load Amps         | 36.2/18.1         | Breakdown Torque          | 151 LB-FT  |  |
| R.P.M.                 | 1765              | Pull-up Torque            | 76.5 LB-FT                                       |  |
| Hz                     | 60 Phase          | Locked-rotor Torque       | 84.9 LB-FT                                       |  |
| NEMA Design Code       | A KVA Code        | Starting Current          | 131 A  |  |
| Service Factor (S.F.)  | 1.15              | No-load Current           | 7.72 A   |  |
| NEMA Nom. Eff.         | 92.4 Power Factor | Line-line Res. @ 25°C     | 0.61892 Ω  |  |
| Rating - Duty          | 40C AMB-CONT      | Temp. Rise @ Rated Load   | 50°C   |  |
| S.F. Amps              | 41/20.4           | Temp. Rise @ S.F. Load    | 61°C   |  |
|                        |                   | Locked-rotor Power Factor | 33.3   |  |

**Load Characteristics 460 V, 60 Hz, 15 HP**

| % of Rated Load | 25     | 50     | 75   | 100    | 125    | 150    | S.F. |
|-----------------|--------|--------|------|--------|--------|--------|------|
| Power Factor    | 46     | 68     | 78   | 83     | 85     | 86     | 84   |
| Efficiency      | 87.5   | 91.8   | 92.6 | 92.4   | 91.8   | 90.8   | 92   |
| Speed           | 1791.8 | 1784.7 | 1777 | 1768.8 | 1759.2 | 1749.3 | 1763 |
| Line amperes    | 8.82   | 11.3   | 14.6 | 18.3   | 22.4   | 26.9   | 20.8 |

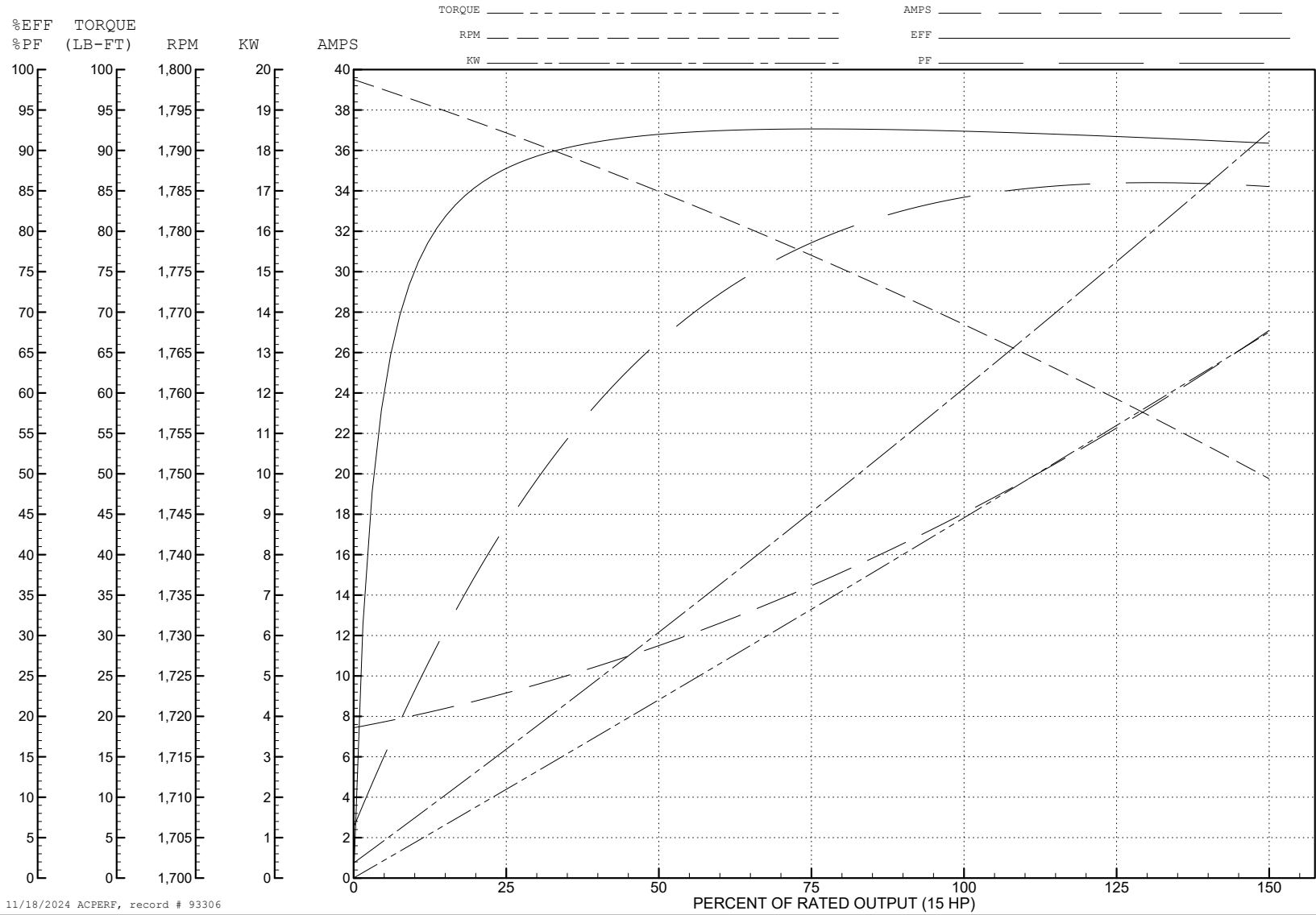
ABB Motors and Mechanical Inc.

WINDING # 09WGT597

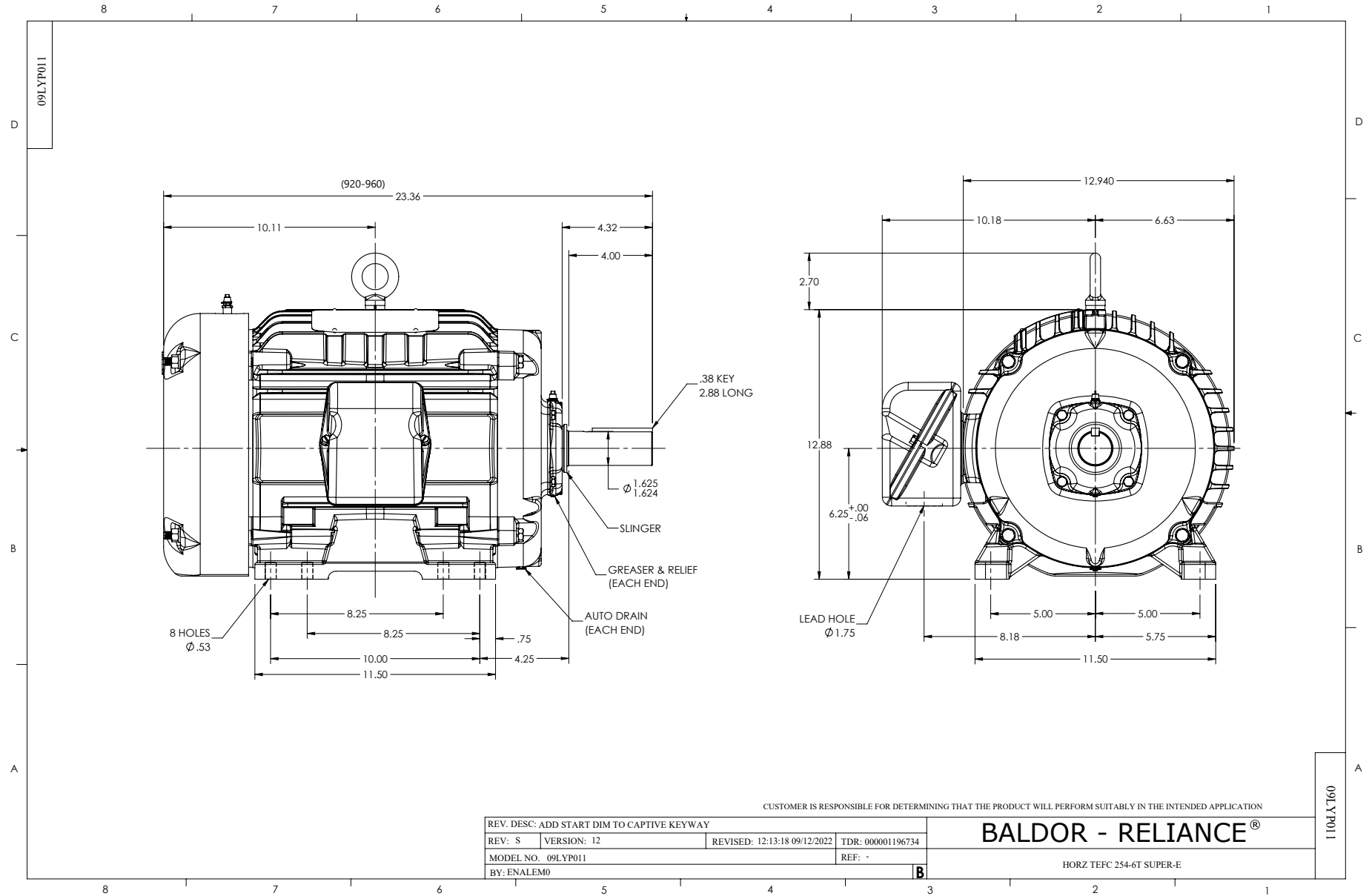
Typical performance - not guaranteed values.

15 HP 3 PH 60 HZ 1765 RPM 460 V 0944M

TORQUES (LB-FT): PO=151 PU=76.5 LR=84.9 LRA=131

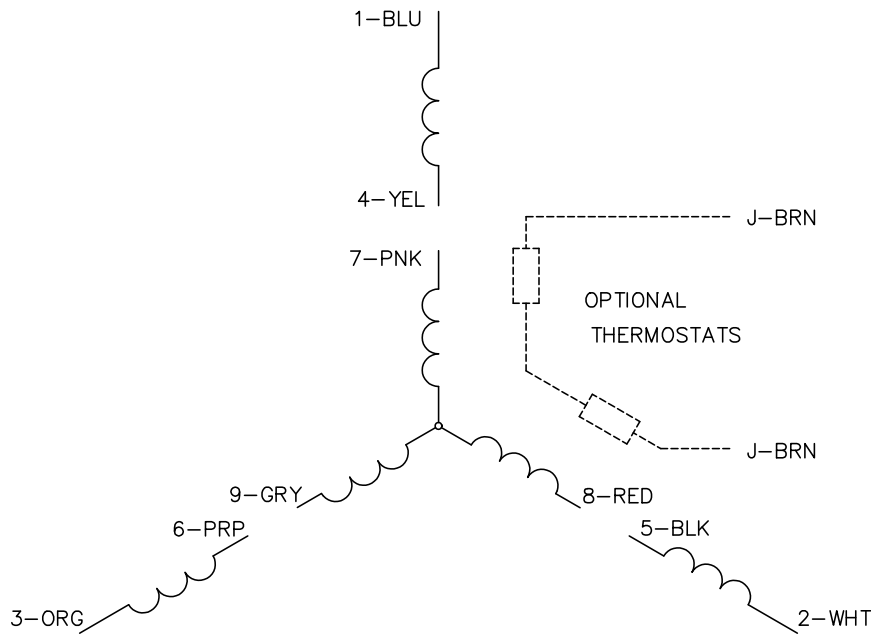


11/18/2024 ACPERF, record # 93306

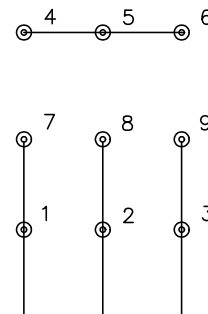




CD0005

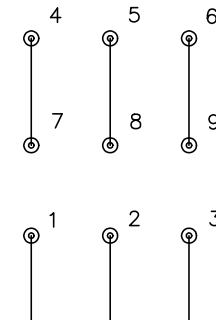


LOW VOLTAGE  
(2Y)



LINE

HIGH VOLTAGE  
(1Y)



LINE

NOTES:

1. INTERCHANGE ANY TWO LINE LEADS TO REVERSE ROTATION.
2. OPTIONAL THERMOSTATS ARE PROVIDED WHEN SPECIFIED.
3. ACTUAL NUMBER OF INTERNAL PARALLEL CIRCUITS MAY BE A MULTIPLE OF THOSE SHOWN ABOVE.
4. LEAD COLORS ARE OPTIONAL. LEADS MUST ALWAYS BE NUMBERED AS SHOWN.

|   |         |                         |              |
|---|---------|-------------------------|--------------|
| REV. DESC: REVISE TO SHOW OPTIONAL COLORS |         |                         |              |
| REV. LTR: E                               | BY: JLP | REVISED: 01/19/99 10:15 | TDR: 0171435 |
| S00000                                    |         | FILE: AAA00005140       | MDL: -       |
|   |         | MTL: -                  |              |

**BALDOR ELECTRIC Co.**

3PH, DV, 9 LEADS

CD0005