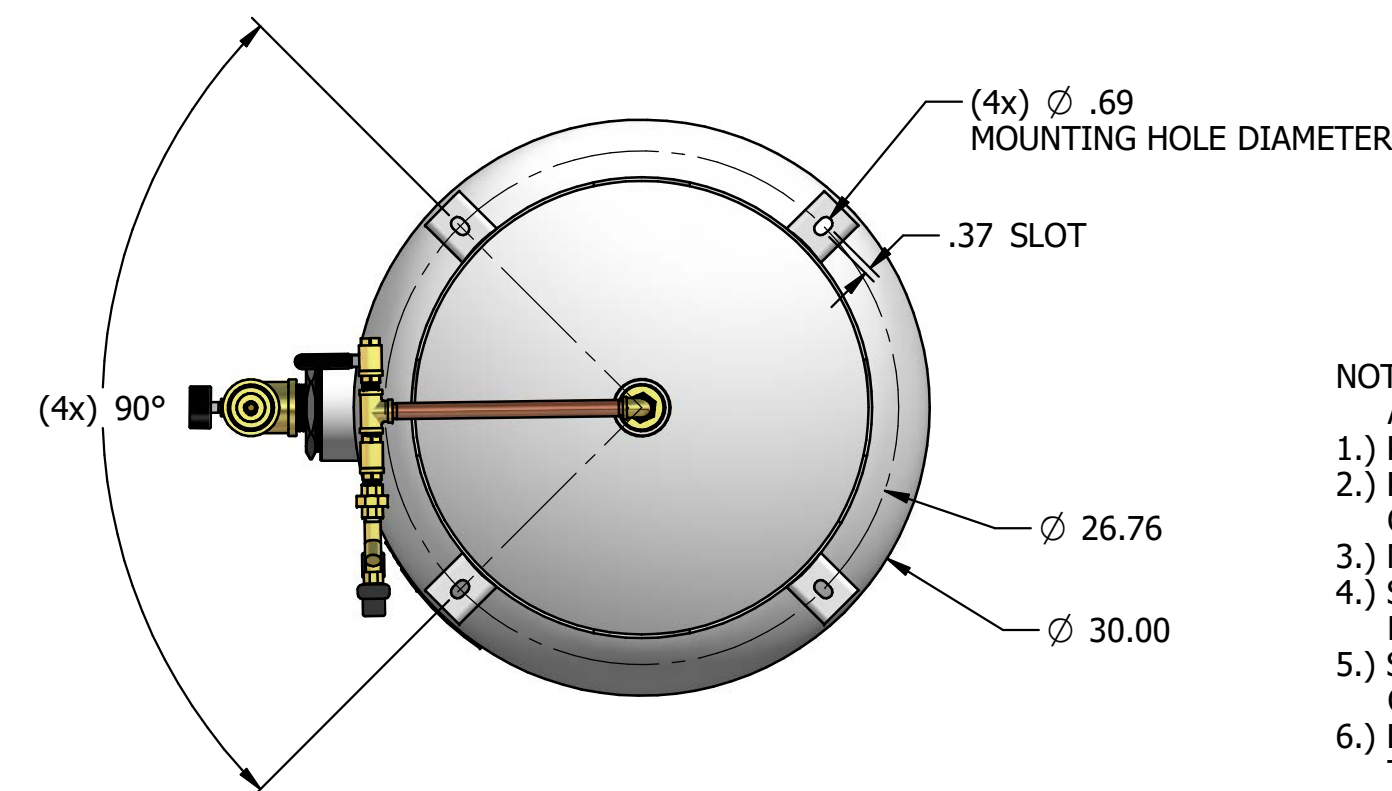
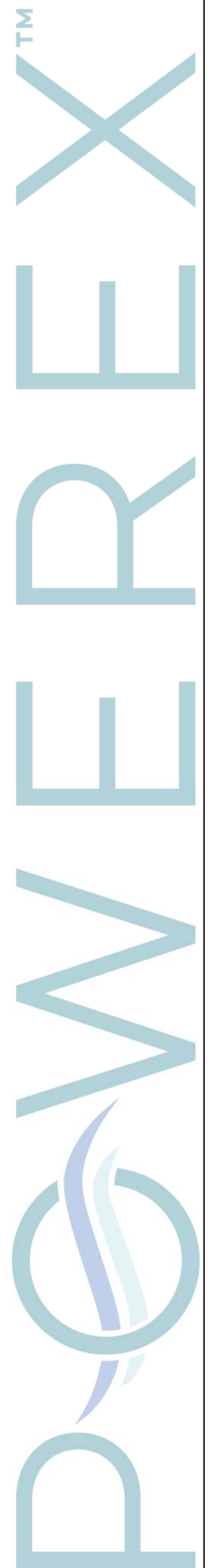
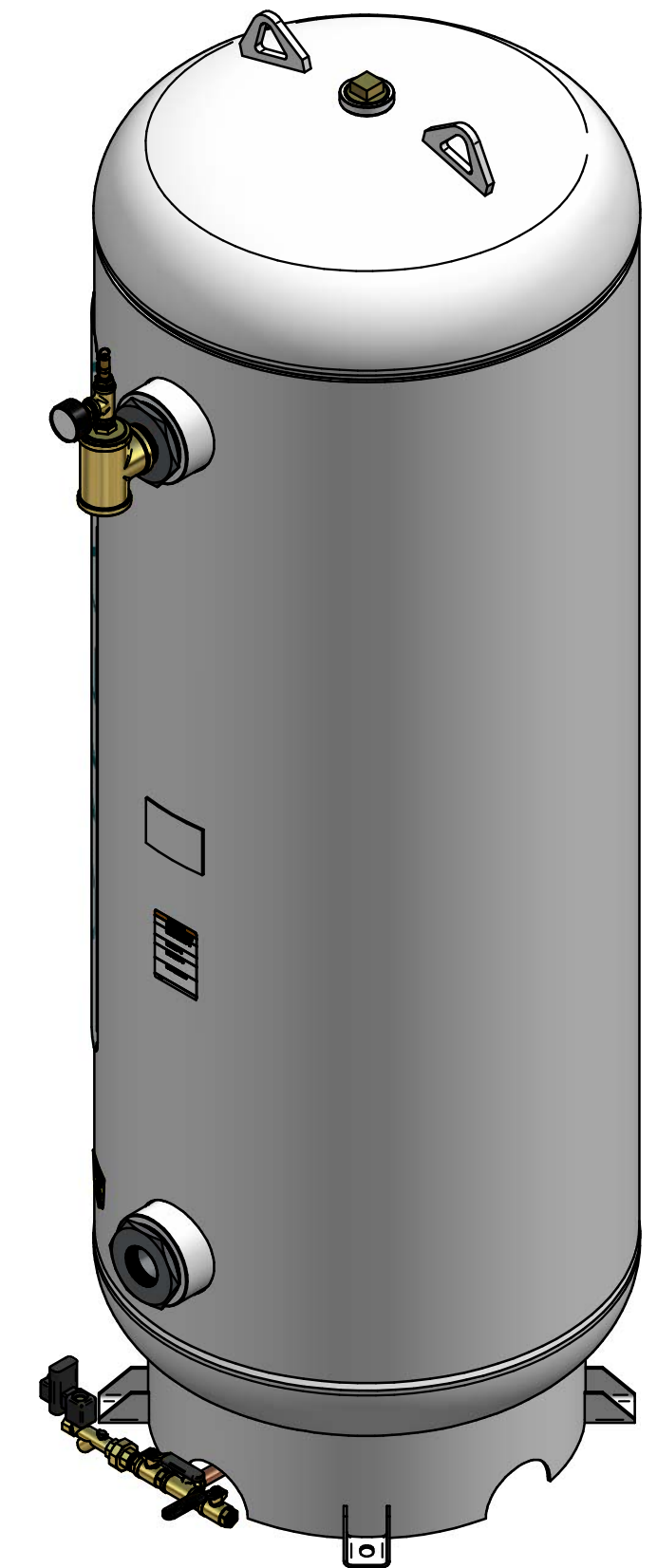
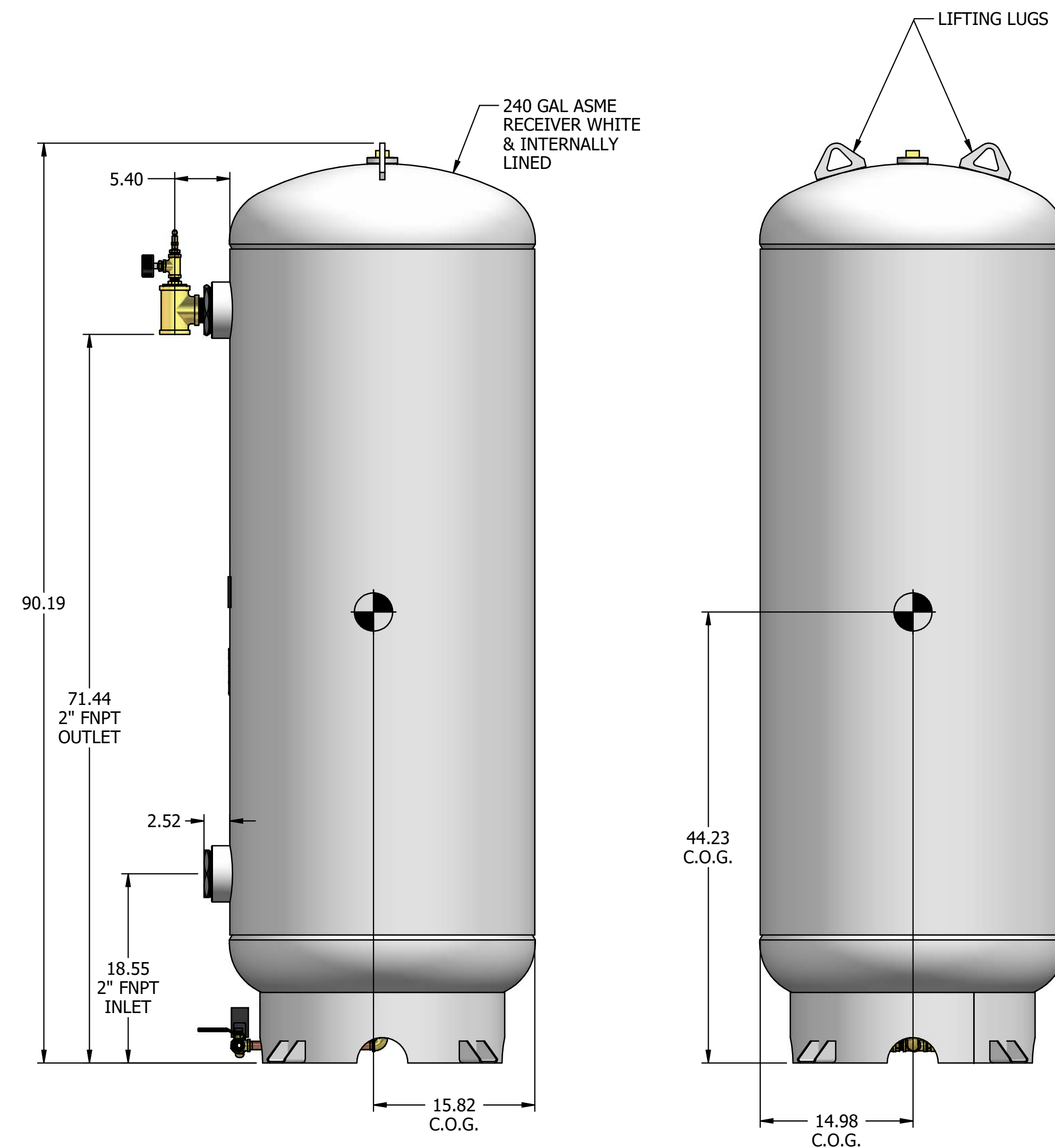
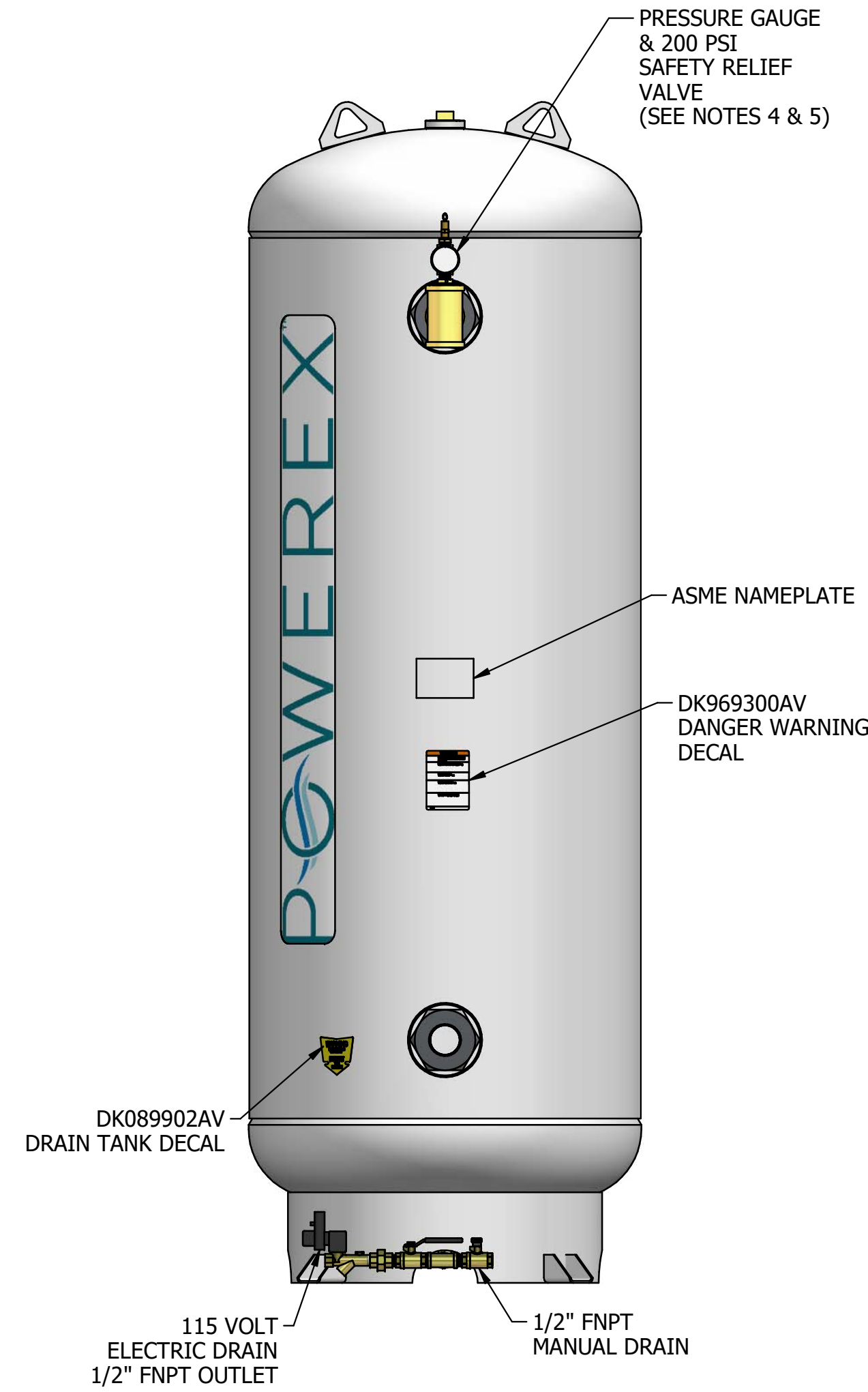
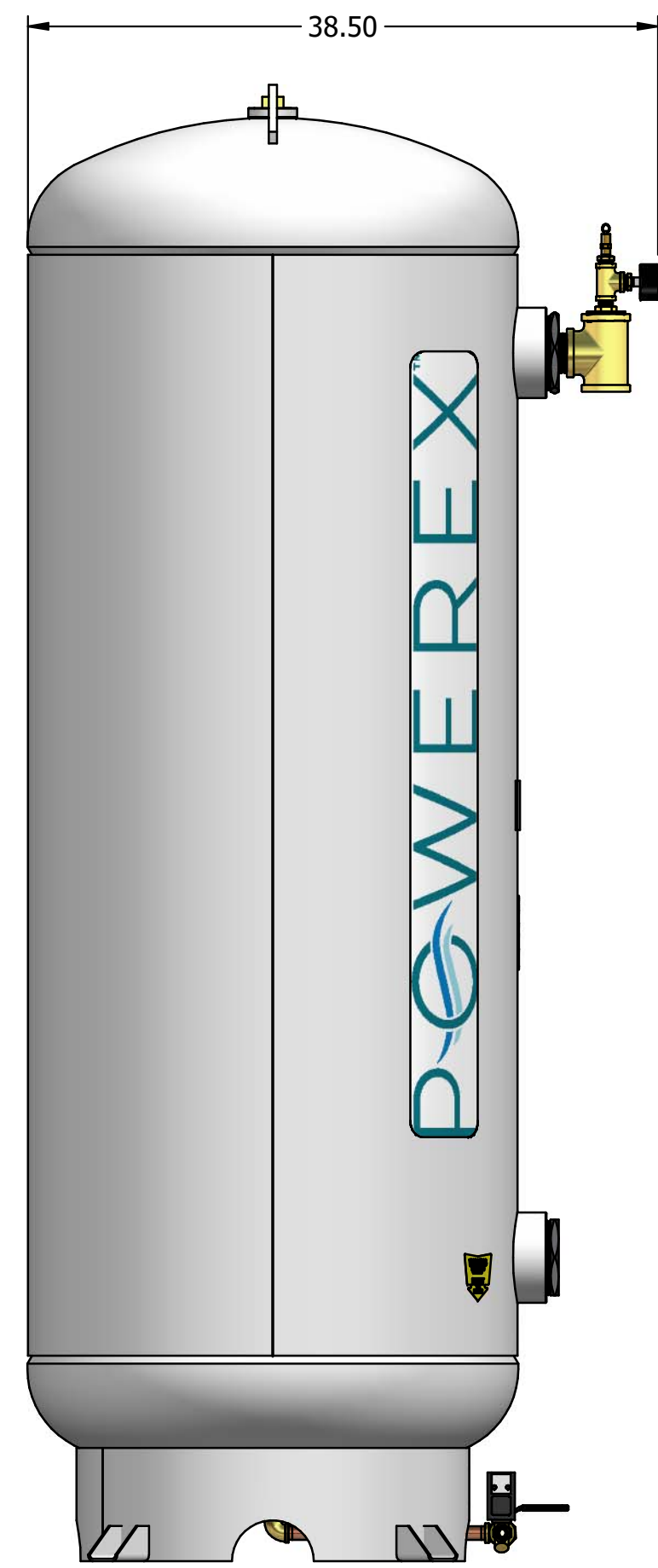
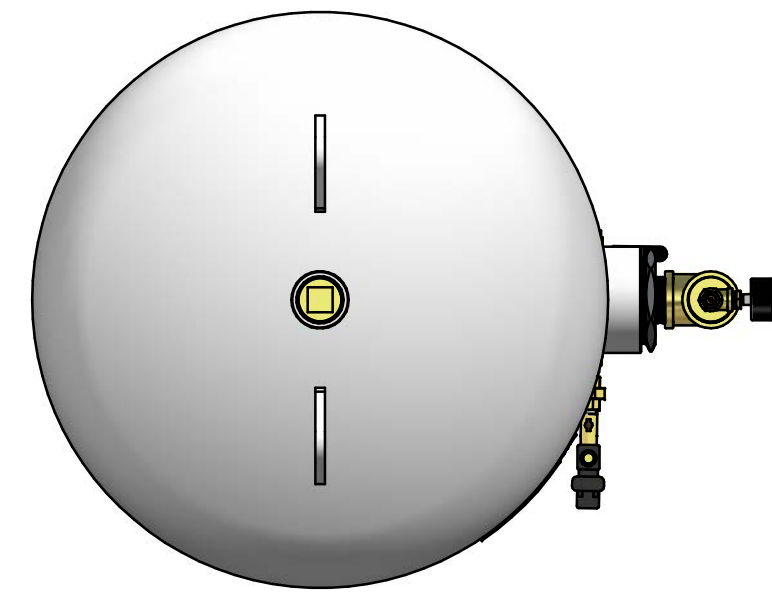


# AR068800WL

## POWEREX 240G PACK-OUT W/E-DRN

REVISION NOTES		
DESCRIPTION	ECN	PR/NOR
RELEASE TO PRODUCTION	PXEC0494	N/A



RECOMMENDED ANCHOR:  
USE (4) 1/2 X 4 1/2"  
ITW RAMSET/REDHEAD  
TRUBOLT WEDGE  
ANCHOR# WS-1244

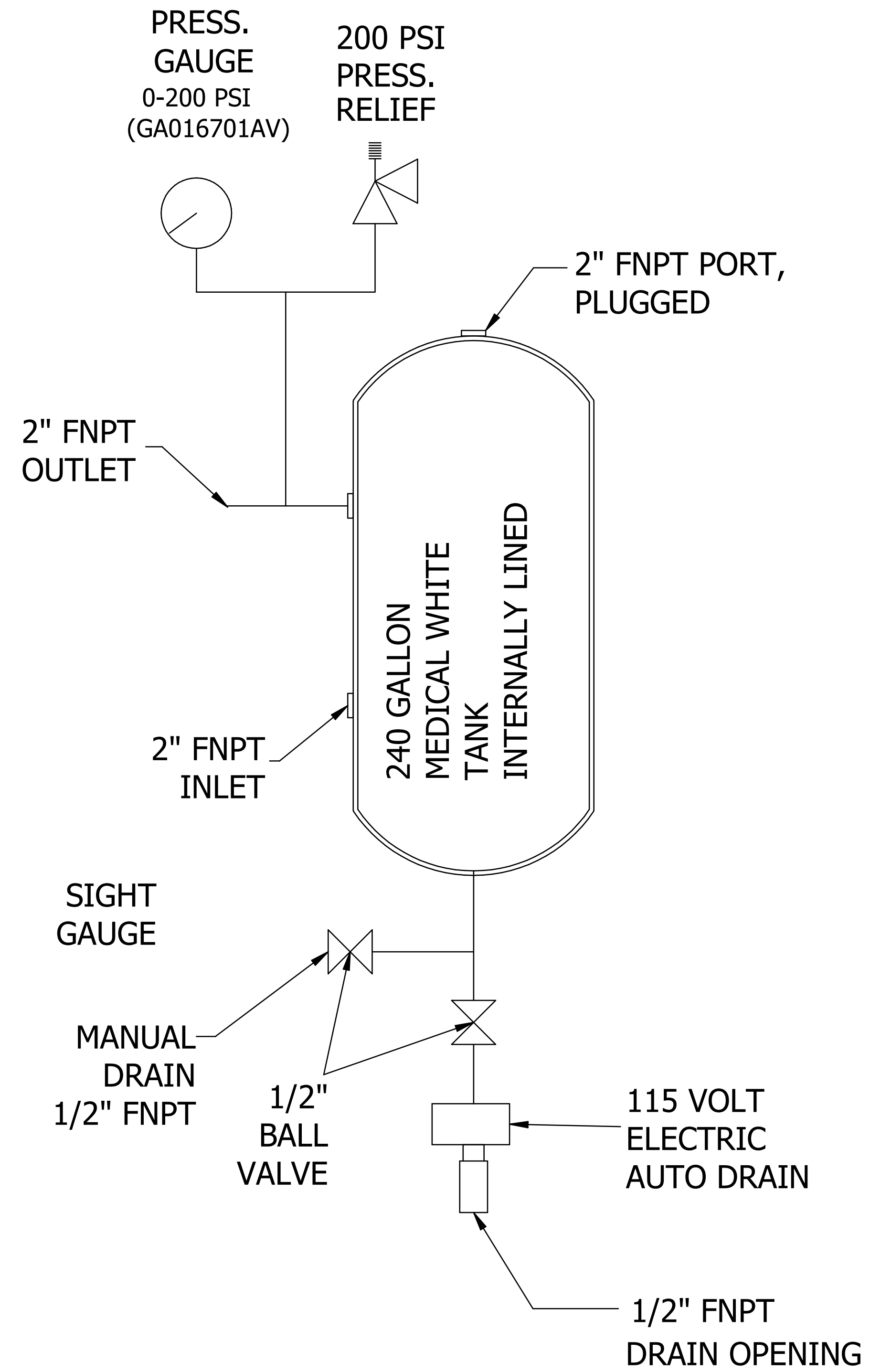
- NOTES:
- APPROXIMATE WEIGHT: 594 LBS
  - READ THE SAFETY GUIDELINES IN THE GENERAL MANUAL.
  - RELEASE ALL PRESSURE AND LOCK OUT PRESSURE VESSEL PER OSHA AND LOCAL CODES WHEN PERFORMING MAINTENANCE.
  - MAXIMUM WORKING PRESSURE = 200 PSI
  - SAFETY RELIEF VALVE PRESSURE MUST NOT EXCEED TANK PRESSURE RATING ON THE ASME LABEL.
  - SAFETY RELIEF FLOW CAPACITY MUST BE GREATER THAN THE COMPRESSOR SYSTEM FLOW CAPACITY.
  - DRAIN WATER FROM TANK DAILY, ADJUST E-DRAIN ACCORDING TO WATER PRODUCED FROM SYSTEM.
  - DO NOT WELD OR ALTER THE PRESSURE VESSEL IN ANY WAY, THIS WILL VOID THE ASME CERTIFICATION AND MAY CAUSE SERIOUS SAFETY HAZARDS.

SYMBOL LEGEND		DRAWINGS TO CONFORM TO CURRENT REVISION OF THE FOLLOWING ASME STANDARDS: Y14.3 MULTI AND SECTIONAL VIEW DWGS Y14.5 DIMENSIONING AND TOLERANCING	
TOLERANCES, UNLESS OTHERWISE SPECIFIED: 0.XX ± .005 0.XXX ± .005 ∠ ± .1	SOLID EDGE DRAWING	DO NOT SCALE DRAWING FOR DIMENSIONS	
	INCH	SHEET 1 OF 2	SCALE 1:10
CONFIDENTIAL DISCLOSURE This drawing is the property of POWEREX of the SCOTT FEZTER COMPANY and is subject to return on demand. Its contents are confidential and must not be copied or submitted to outside parties for use or examination.		AUTHOR GSeaver	ORIGINATION DATE 9/15/2022
ITEM # 742988	APPROVALS ON FILE IN PLM		
MATERIAL ---	POWEREX 150 PRODUCTION DRIVE, HARRISON OH 45030 (888) 769-7979		
DESCRIPTION POWEREX 240G PACK-OUT W/E-DRN	DRAWING NUMBER AR068800WL	REVISION A	SIZE D

# AR068800WL

POWEREX 240G PACK-OUT W/E-DRN

REVISION NOTES		
DESCRIPTION	ECN	PR/NOR
RELEASE TO PRODUCTION	PXEC0494	N/A



POWEREX<sup>TM</sup>

SYMBOL LEGEND		DRAWINGS TO CONFORM TO CURRENT REVISION OF THE FOLLOWING AISC STANDARDS: Y14.1 MULTI AND SECTIONAL VIEW DWGS Y14.5 DIMENSIONING AND TOLERANCING	
TOLERANCES, UNLESS OTHERWISE SPECIFIED	SOLID EDGE DRAWING	DO NOT SCALE DRAWING FOR DIMENSIONS	
0.XX ± .05	INCH	SHEET 2 OF 2	SCALE 1:1
0.XXX ± .005			
± .1	CONFIDENTIAL DISCLOSURE This drawing is the property of POWEREX of the SCOTT FEZTER COMPANY and is subject to return on demand. Its contents are confidential and must not be copied or submitted to outside parties for use or examination.		APPROVALS ON FILE IN PLM
ITEM NO: 742988	AUTHOR GSeaver	ORIGINATION DATE 9/15/2022	
MATERIAL: --			
DESCRIPTION POWEREX 240G PACK-OUT W/E-DRN	DRAWING NUMBER AR068800WL	REVISION A	SIZE D