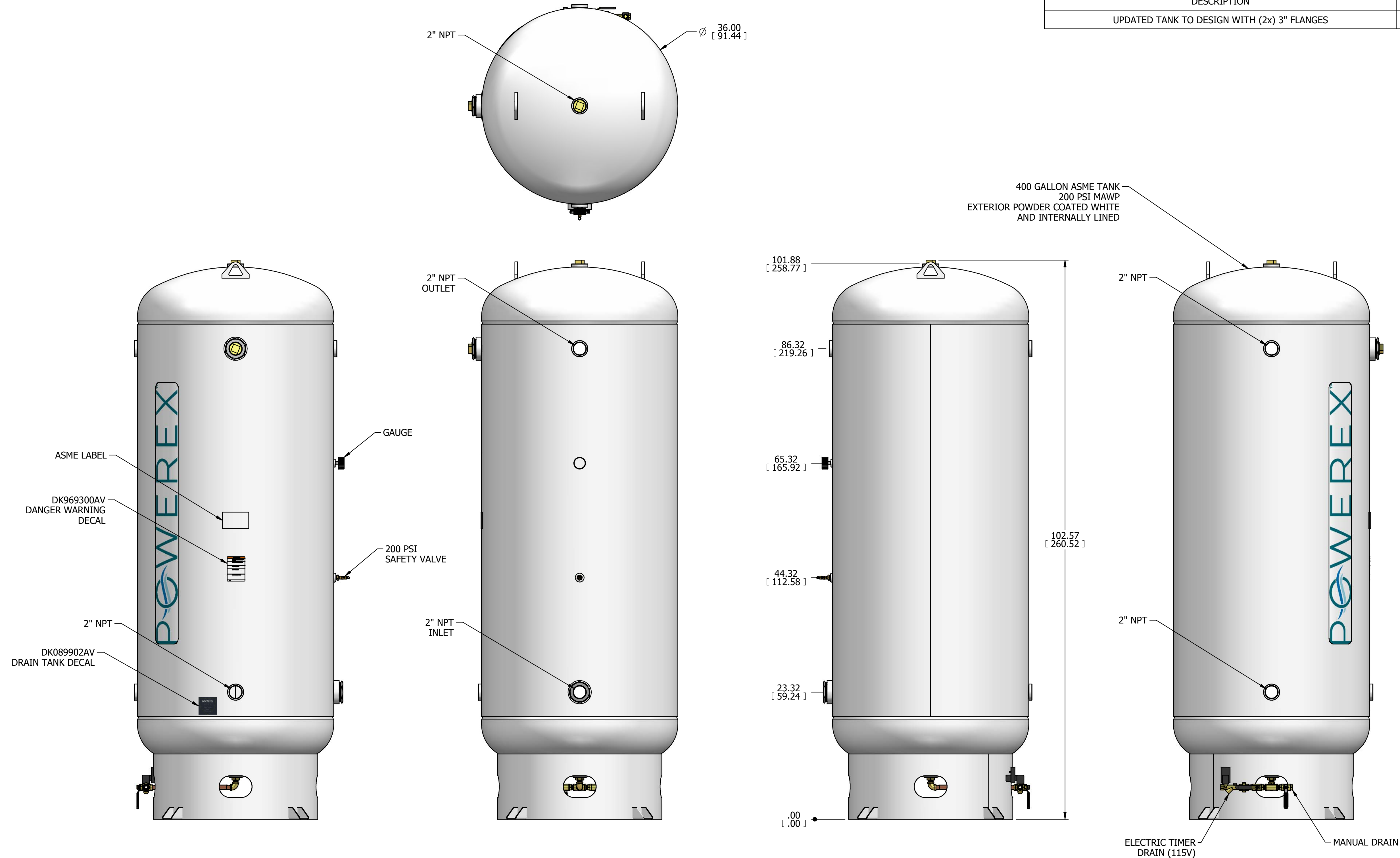


REVISION NOTES		
DESCRIPTION	ECN	PR/NOR
UPDATED TANK TO DESIGN WITH (2x) 3" FLANGES	PXEC0641	N/A



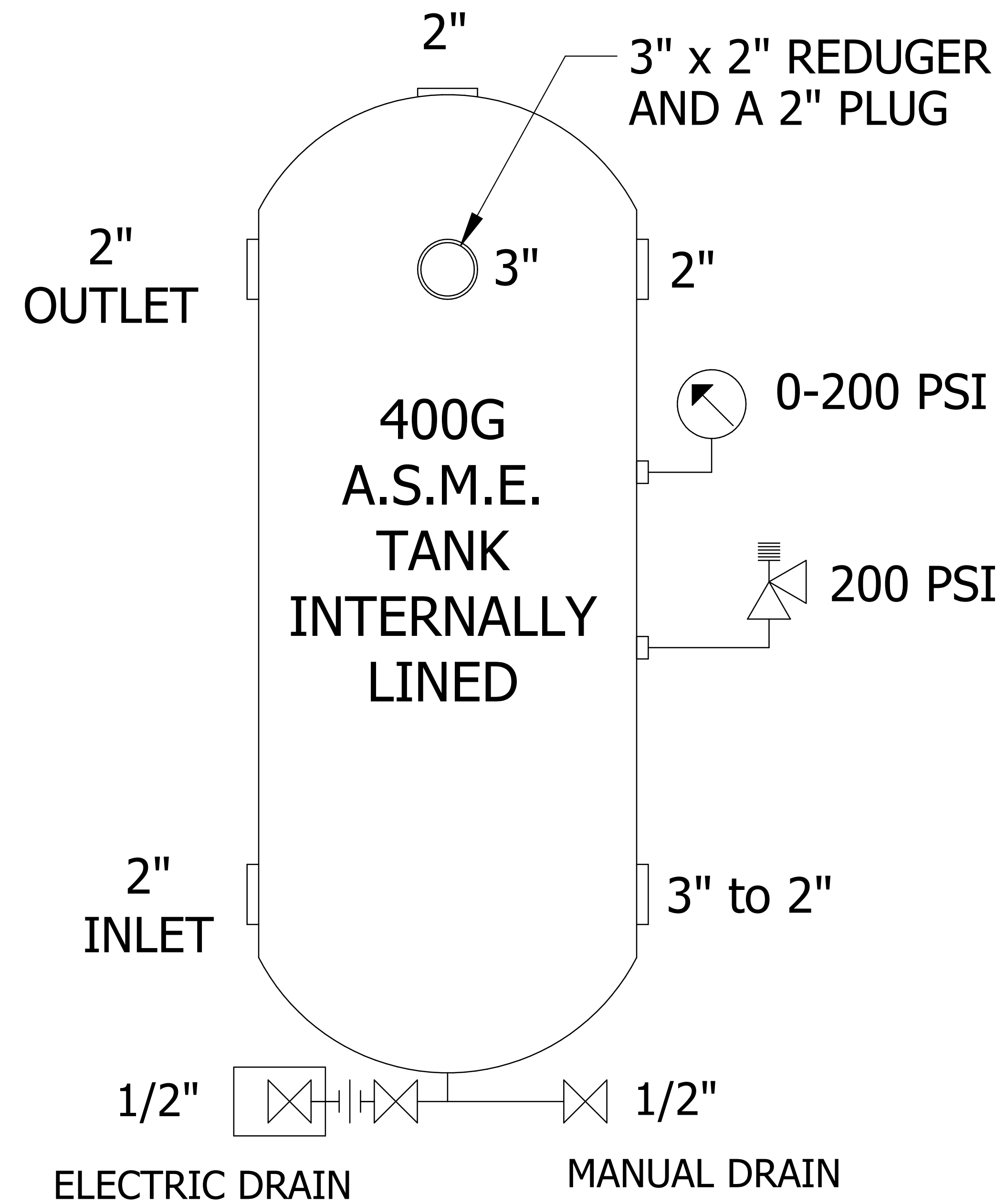
- NOTES:
- 1) READ THE SAFETY GUIDELINES IN THE GENERAL MANUAL.
 - 2) RELEASE ALL PRESSURE AND LOCK OUT PRESSURE VESSEL PER OSHA AND LOCAL CODES WHEN PERFORMING MAINTENANCE.
 - 3) MAXIMUM WORKING PRESSURE = 200 PSI
 - 4) SAFETY RELIEF VALVE PRESSURE MUST NOT EXCEED TANK PRESSURE RATING ON THE ASME LABEL.
 - 5) SAFETY RELIEF FLOW CAPACITY MUST BE GREATER THAN THE COMPRESSOR SYSTEM FLOW CAPACITY.
 - 6) DRAIN WATER FROM TANK DAILY, ADJUST E-DRAIN ACCORDING TO WATER PRODUCED FROM SYSTEM.
 - 7) DO NOT WELD OR ALTER THE PRESSURE VESSEL IN ANY WAY, THIS WILL VOID THE ASME CERTIFICATION AND MAY CAUSE SERIOUS SAFETY HAZARDS.


- NOTES:
1. APPROXIMATE WEIGHT: 868 LBS [391 Kg]
 2. 200 PSI ASME PRESSURE VESSEL [13.79 BAR]
 3. 400 GALLON [1514.17 LITER]
 4. TANK IS POWDER COATED WHITE & INTERNALLY LINED

RECOMMENDED ANCHOR:
USE (4) 1/2 X 4 1/2"
ITW RAMSET/REDHEAD
TRUBOLT WEDGE
ANCHOR# WS-1244

SYMBOL LEGEND		DRAWINGS TO CONFORM TO CURRENT REVISION OF THE FOLLOWING STANDARDS:	
		Y14.1 MULTI AND SECTIONAL VIEW DWGS	
		Y14.5 DIMENSIONING AND TOLERANCING	
TOLERANCES, UNLESS OTHERWISE SPECIFIED:	SOLID EDGE DRAWING	DO NOT SCALE DRAWING FOR DIMENSIONS	
0.XXX ± .005			
0.XXX ± .005			
± .1	INCH	SHEET 1 OF 2	SCALE 1:10
CONFIDENTIAL DISCLOSURE This drawing is the property of POWEREX of the SCOTT FEZTER COMPANY and is subject to return on demand. Its contents are confidential and must not be copied or submitted to outside parties for use or examination.		AUTHOR	APPROVALS ON FILE IN PLM
ITEM # 742447		GSeaver	7/25/2024
MATERIAL: ---		POWEREX	
DESCRIPTION		DRAWING NUMBER	REVISION
400 GALLON PACK OUT RECEIVER (VES07584)		AR069000WL	B D

REVISION NOTES		
DESCRIPTION	ECN	PR/NOR
UPDATED TANK TO DESIGN WITH (2x) 3" FLANGES	PXEC0641	N/A



SYMBOL LEGEND		DRAWINGS TO CONFORM TO CURRENT REVISION OF THE FOLLOWING AISC STANDARDS: Y14.1 MULTI AND SECTIONAL VIEW DWGS Y14.5 DIMENSIONING AND TOLERANCING	
TOLERANCES, UNLESS OTHERWISE SPECIFIED		DO NOT SCALE DRAWING FOR DIMENSIONS	
0.XX ± .05	SOLID EDGE DRAWING	SHEET 2 OF 2	
0.XXX ± .005	INCH	SCALE	1:1
± .1		APPROVALS ON FILE IN PLM	
CONFIDENTIAL DISCLOSURE This drawing is the property of POWEREX of the SCOTT FEZTER COMPANY and is subject to return on demand. Its contents are confidential and must not be copied or submitted to outside parties for use or examination.		AUTHOR	REVISION DATE
ITEM NO: 742447		GSeaver	7/25/2024
MATERIAL: --		 150 PRODUCTION DRIVE, HARRISON OH 45030 (888) 769-7979	
DESCRIPTION	DRAWING NUMBER	REVISION	SIZE
400 GALLON PACK OUT RECEIVER (VES07584)	AR069000WL	B	D