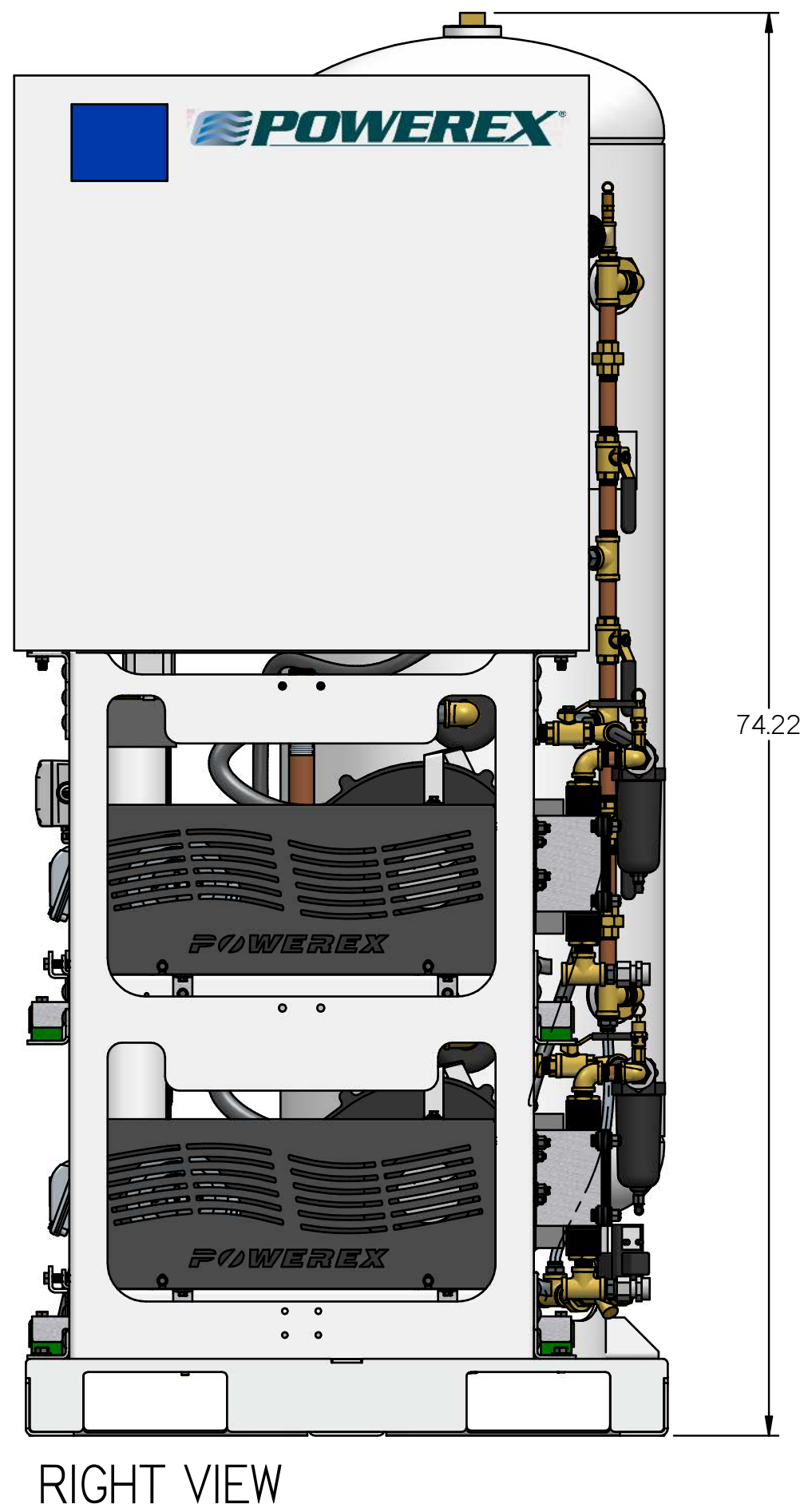
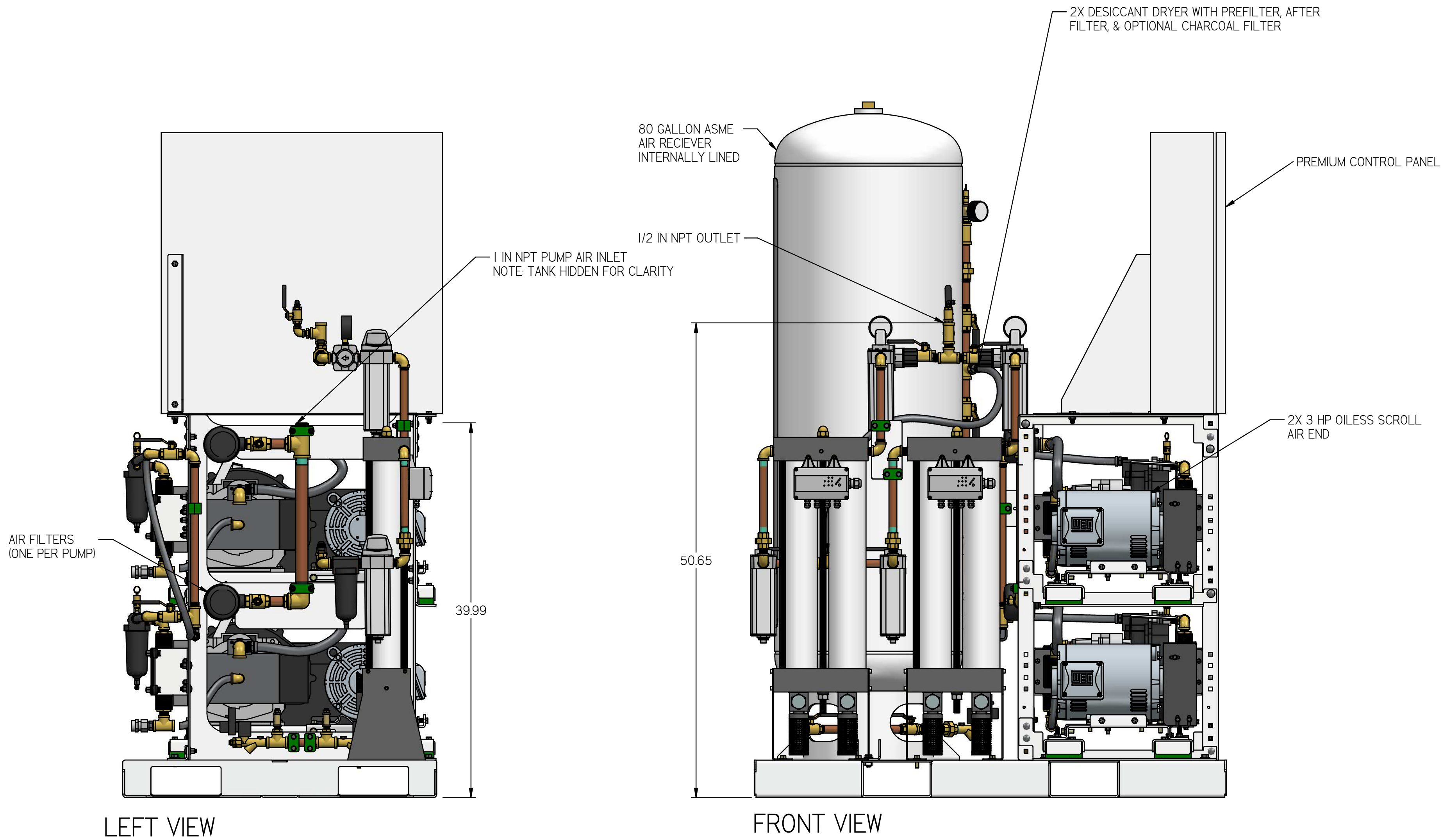
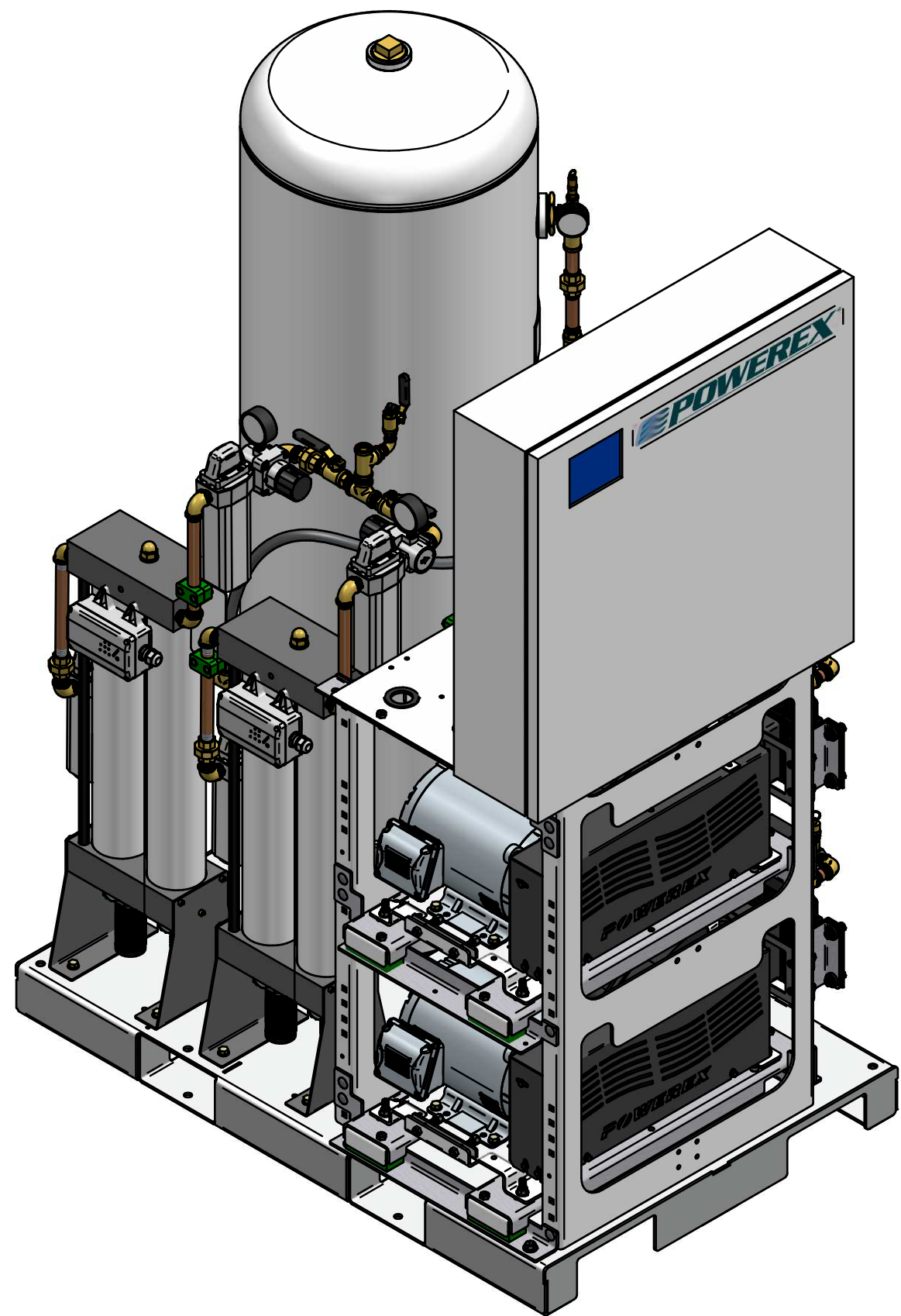
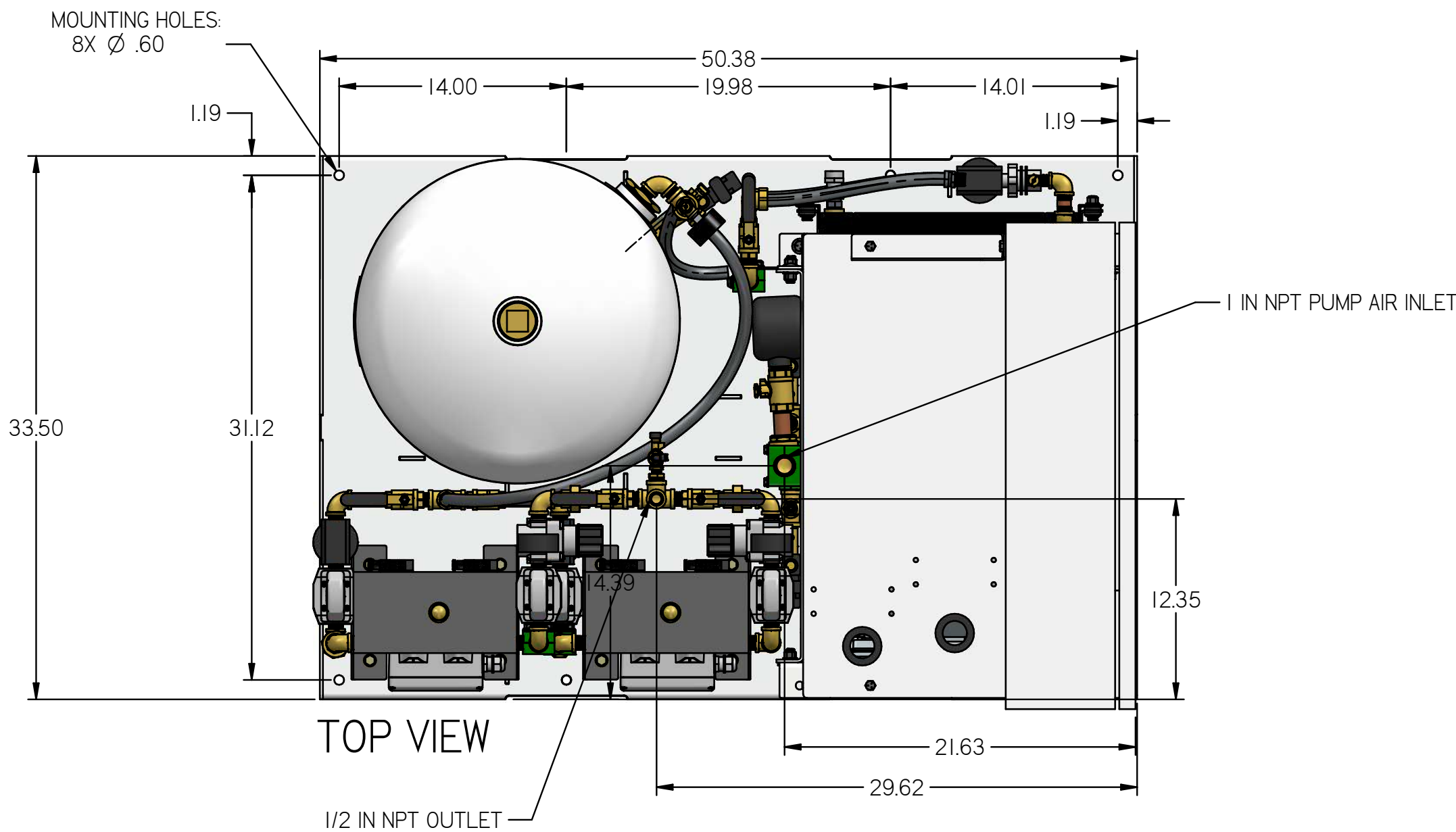
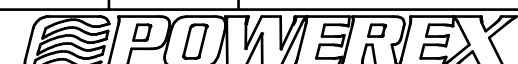


LSD03A3  
LAB OPEN SCROLL SYSTEM  
3 HP DUPLEX WITH 80  
GALLON TANK  
PREMIUM PANEL

REVISION NOTES		
DESCRIPTION	ECN	PR/NOR
PRODUCTION RELEASE	PXEC0169	N/A

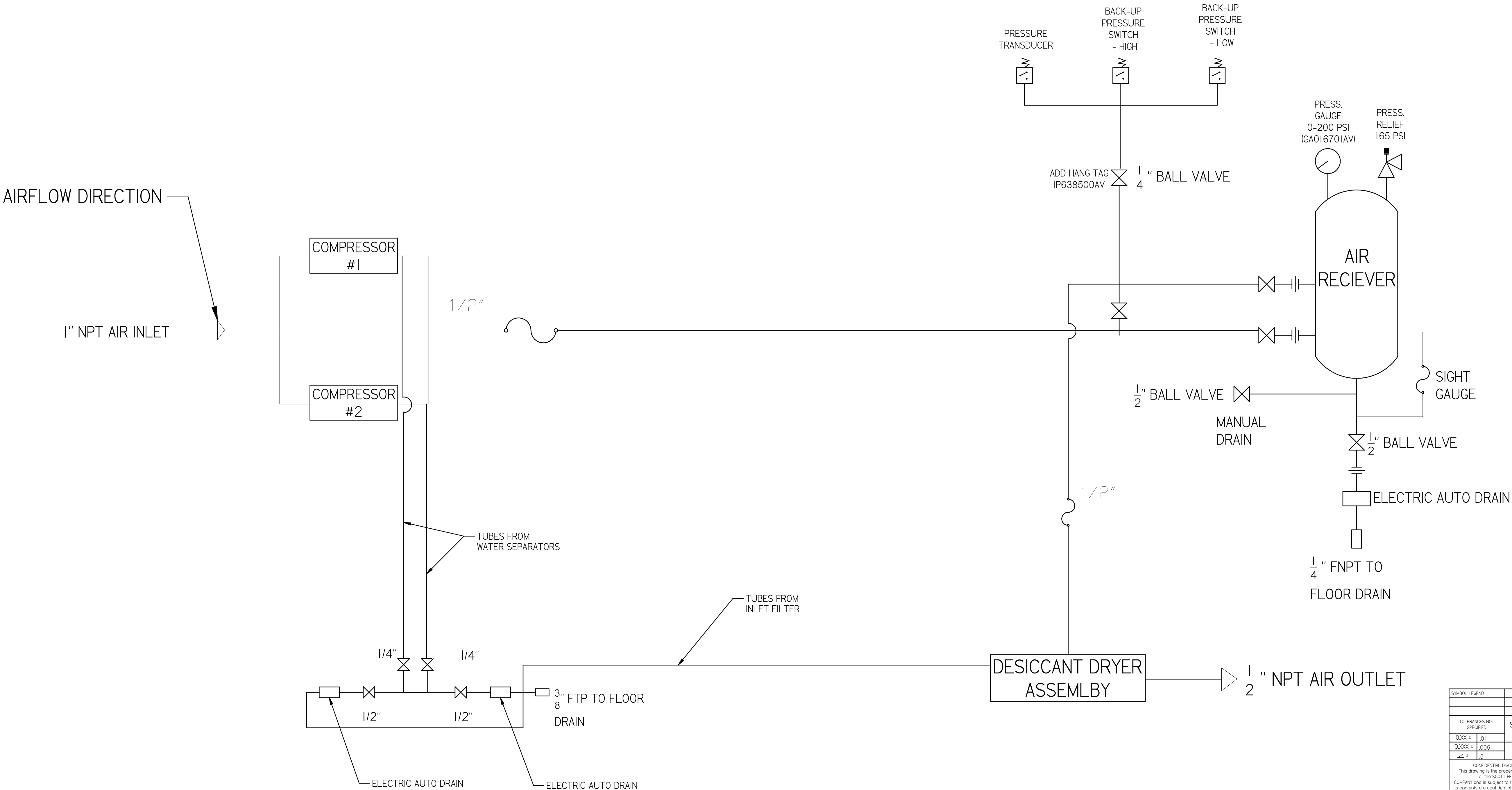



- NOTES:
1. APPROX SYSTEM WEIGHT: 1055 LB
  2. 24" MINIMUM MAINTENANCE CLEARANCE RECOMMENDED ALL SIDES. CLEARANCE FOR CONTROL PANEL SHALL BE IN ACCORDANCE WITH OSHA/NEC REQUIREMENTS

SYMBOL LEGEND		DRAWINGS TO CONFORM TO CURRENT REVISION OF THE FOLLOWING ANSI STANDARDS: Y14.3 MULTI AND SECTIONAL VIEW DWGS Y14.5 DIMENSIONING AND TOLERANCING		
TOLERANCES NOT SPECIFIED		DO NOT SCALE DRAWING FOR DIMENSIONS		
0.0XX ± .01		SHEET 1 OF 4	SCALE	1:10
0.0XX ± .005				
± .5				
SOLID EDGE DRAWING		INCH		
CONFIDENTIAL DISCLOSURE This drawing is the property of POWEREX of the SCOTT FETTER COMPANY and is subject to return on demand. Its contents are confidential and must not be copied or submitted to outside parties for use or examination.				
ITEM ID: 716452		AUTHOR ASoulek	ORIGINATION DATE 10/31/2018	APPROVALS ON FILE IN PLM
MATERIAL: SEE PART DRAWINGS				
DESCRIPTION: LAB OPEN SCROLL SYSTEM 3 HP DUPLEX WITH 80 GALLON TANK		DRAWING NUMBER LSD03A3	REVISION B	SIZE D

LSD03A3  
LAB OPEN SCROLL SYSTEM  
3 HP DUPLEX WITH 80  
GALLON TANK  
  
SYSTEM FLOW DIAGRAM

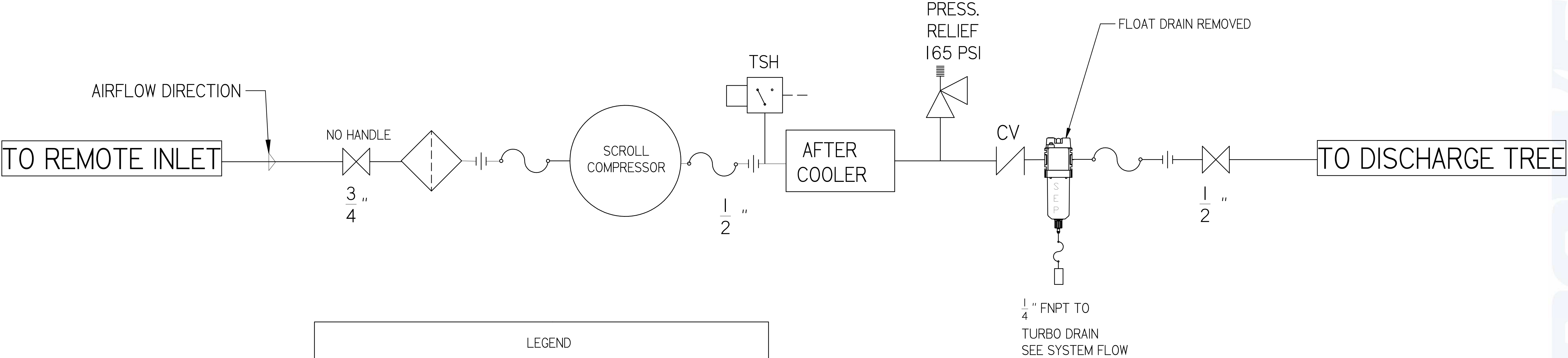
REVISION NOTES		
DESCRIPTION	ECN	PR/NOR
PRODUCTION RELEASE	PXEC0169	N/A




SYMBOL LEGEND		DRAWINGS TO CONFORM TO CURRENT REVISION OF THE FOLLOWING ANSI STANDARDS: Y14.3 MULTI AND SECTIONAL VIEW DWGS Y14.5 DIMENSIONING AND TOLERANCING			
TOLERANCES NOT SPECIFIED		SOLID EDGE DRAWING		DO NOT SCALE DRAWING FOR DIMENSIONS	
0.XX ± .01		SHEET 2 OF 4		SCALE	1:1
0.XXX ± .005					
≤ + 5		INCH			
CONFIDENTIAL DISCLOSURE This drawing is the property of POWEREX of the SCOTT PETER COMPANY and is subject to return on demand. Its contents are confidential and must not be copied or submitted to outside parties for use or examination.					
ITEM ID: 716452		AUTHOR	ORIGINATION DATE	APPROVALS ON FILE IN PLM	
		ASoulek	10/31/2018		
MATERIAL SEE PART DRAWINGS		 150 PRODUCTION DRIVE, HARRISON OH 45030 (888) 769-7079			
DESCRIPTION LAB OPEN SCROLL SYSTEM 3 HP DUPLEX WITH 80 GALLON TANK		DRAWING NUMBER LSD03A3	REVISION B	SIZE D	

REVISION NOTES		
DESCRIPTION	ECN	PR/NOR
PRODUCTION RELEASE	PXEC0169	N/A

LSD03A3  
LAB OPEN SCROLL SYSTEM  
3 HP DUPLEX WITH 80  
GALLON TANK  
LAB COMPRESSOR  
FLOW DIAGRAM

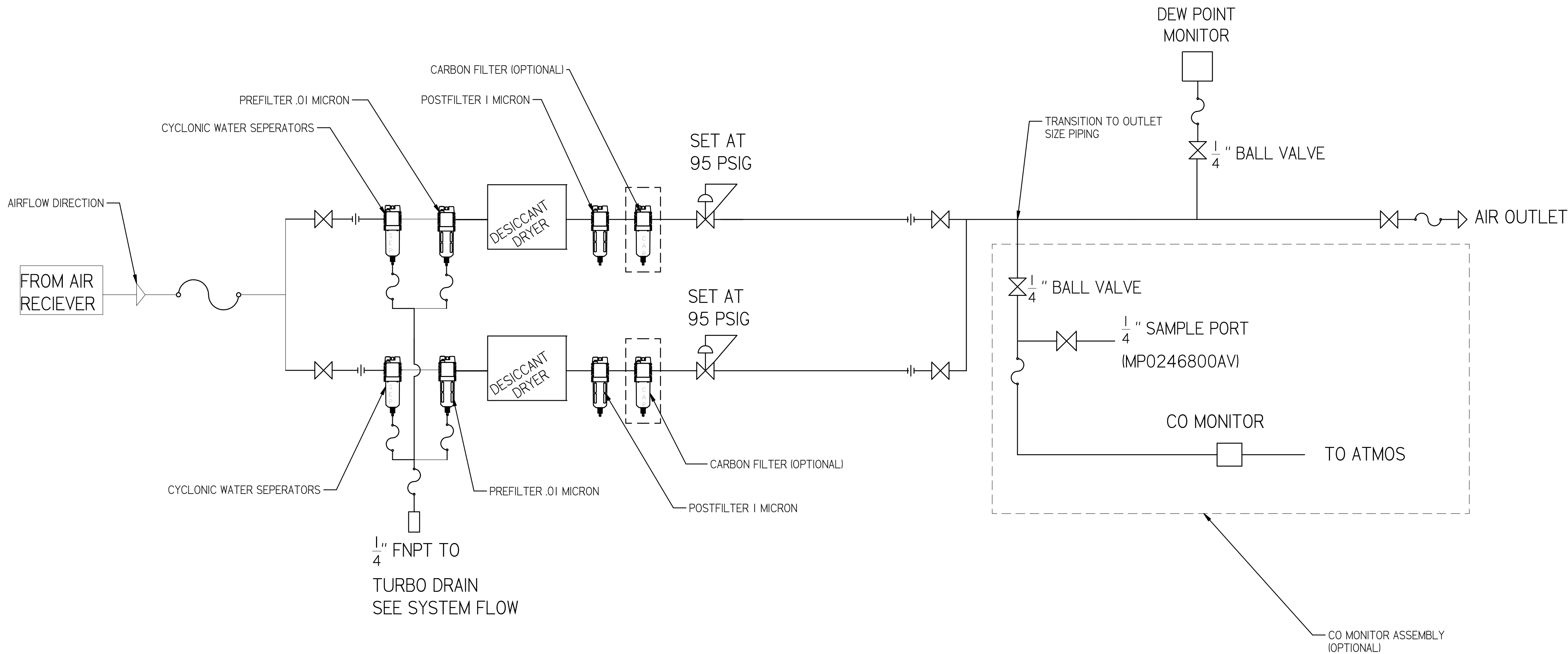


LEGEND	
	RELIEF VALVE
	INTAKE FILTER
	AIR FILTER
	3 WAY VALVE
	CARBON FILTER
	BALL VALVE
	PRESSURE SWITCH
	REGULATOR
	SEPARATOR
	CHECK VALVE
	FLEX LINE
	HIGH TEMP SWITCH

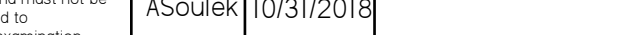
SYMBOL LEGEND		DRAWINGS TO CONFORM TO CURRENT REVISION OF THE FOLLOWING ANSI STANDARDS: Y14.3 MULTI AND SECTIONAL VIEW DWGS Y14.5 DIMENSIONING AND TOLERANCING			
TOLERANCES NOT SPECIFIED		SOLID EDGE DRAWING		DO NOT SCALE DRAWING FOR DIMENSIONS	
0.0XX ± .01		INCH		SHEET 3 OF 4	
0.0XX ± .005					
0.0XX ± .005		SCALE		1:1	
CONFIDENTIAL DISCLOSURE This drawing is the property of POWEREX of the SCOTT PETER COMPANY and is subject to return on demand. Its contents are confidential and must not be copied or submitted to outside parties for use or examination.					
ITEM ID: 716452		AUTHOR		ORIGINATION DATE	
		ASoulek		10/31/2018	
MATERIAL SEE PART DRAWINGS		APPROVALS ON FILE IN PLM			
					
DESCRIPTION LAB OPEN SCROLL SYSTEM 3 HP DUPLEX WITH 80 GALLON TANK		150 PRODUCTION DRIVE, HARRISON OH 45030 (888) 769-7079			
		DRAWING NUMBER LSD03A3		REVISION B	
				SIZE D	

LSD03A3  
LAB OPEN SCROLL SYSTEM  
3 HP DUPLEX WITH 80  
GALLON TANK  
LAB DRYER  
FLOW DIAGRAM

REVISION NOTES		
DESCRIPTION	ECN	PR/NOR
PRODUCTION RELEASE	PXEC0169	N/A



PIPE SIZE CHART		
PUMP COUNT	DRYER PLUMBING SIZE	OUTLET PIPE SIZE
2	1/2"	1/2"
3	1/2"	1"
4	1/2"	1"
6	1"	1-1/2"
8	1"	1-1/2"
9	1"	1-1/2"
12	1-1/2"	2"
15	1-1/2"	2"
18	1-1/2"	2"

SYMBOL LEGEND		DRAWINGS TO CONFORM TO CURRENT REVISION OF THE FOLLOWING ANSI STANDARDS: Y14.3 MULTI AND SECTIONAL VIEW DWGS Y14.5 DIMENSIONING AND TOLERANCING			
TOLERANCES NOT SPECIFIED: 0.XX + .01 0.XX + .005 ≤ + .5		SOLID EDGE DRAWING		DO NOT SCALE DRAWING FOR DIMENSIONS	
		INCH		SHEET 4 OF 4	
CONFIDENTIAL DISCLOSURE This drawing is the property of POWEREX of the SCOTT FETTER COMPANY and is subject to return on demand. Its contents are confidential and must not be copied or submitted to outside parties for use or examination.		AUTHOR  ASoulek		ORIGINATION DATE  10/31/2018	
ITEM ID: 716452		APPROVALS ON FILE IN PLM			
MATERIAL: SEE PART DRAWINGS		 150 PRODUCTION DRIVE, HARRISON NJ 07033 (888) 769-7979			
DESCRIPTION: LAB OPEN SCROLL SYSTEM 3 HP DUPLEX WITH 80 GALLON TANK		DRAWING NUMBER LSD03A3		REVISION B	
				SIZE D	