

BALDOR • RELIANCE

Customer information packet

EM4400T-G

100HP, 1785RPM, 3PH, 60HZ, 405T, A40064M, TEFC

Class - None

Division - Not Applicable

Specifications

Enclosure	TEFC
Frame	405T
Frame Material	Iron
Frequency	60.00 Hz
Haz Area Class and Group	None
Haz Area Division	Not Applicable
Motor Letter Type	Three Phase
Output @ Frequency	100.000 HP @ 60 HZ
Phase	3
Synchronous Speed @ Frequency	1800 RPM @ 60 HZ
Voltage @ Frequency	230.0 V @ 60 HZ 460.0 V @ 60 HZ
Agency Approvals	CSA EEV CCSA US
Ambient Temperature	40 °C
Auxiliary Box	NO AUXILLARY BOX
Base Indicator	Rigid
Bearing Grease Type	Polyrex EM (-20F +300F)
Current @ Voltage	112.000 A @ 460.0 V 224.000 A @ 230.0 V
Design Code	B
Drip Cover	No Drip Cover
Duty Rating	CONT
Efficiency @ 100% Load	95.4 %
Feedback Device	NO FEEDBACK
Heater Indicator	No Heater
High Voltage Full Load Amps	112.0 a
Insulation Class	H
Inverter Code	Not Inverter
KVA Code	G
Lifting Lugs	Standard Lifting Lugs
Motor Lead Quantity/Wire Size	3 @ 2 AWG

Part detail

Revision	N
Type	AC
Mech. spec.	
Base	
Status	PRD/A
Elec. spec.	A40WG1610
Layout	617429-001
Eff. date	09-19-2023
CD Diagram	416820-002
Poles	04
Leads	3#2,6#4
Proprietary	False
Created date	07-17-2013

Motor Standards	NEMA
Motor Type	A40064M
Mounting Arrangement	F1
Number of Poles	4
Overall Length	38.04 IN
Power Factor	87
Product Family	General Industrial
Pulley End Bearing Type	Ball
Pulley Face Code	Standard
Service Factor	1.15
Shaft Ground Indicator	Shaft Grounding
Shaft Rotation	Reversible
Shaft Slinger Indicator	No Slinger
Speed	1785 rpm
Speed Code	Single Speed
Starting Method	Direct on line
Thermal Device - Bearing	None
Thermal Device - Winding	None

Nameplate

NP2496L	
MOBIL POLYREX EM	

NP2381L

SPEC NO.	P40G3927	CAT.NO.	EM4400T-G	FRAME	405T
HP	100//75	PHASE	3	DESIGN	B
		TYPE	P		
RPM	1785//1485	HZ	60//50	AMB	40
		SF	1.15		
VOLTS	230/460//190/380	DUTY	CONT	INSUL.CLASS	H
AMPS	224/112//206/103	ENCL	TEFC	CODE	G
DRIVE END BEARING	80BC03J30X	NEMA-NOM-EFFICIENCY	95.4		
OPP D.E. BEARING	80BC03J30X				
SER.NO.					
	VPWM INV DUTY 10:1 CT AT 1.0SF			MOTOR WEIGHT	

S/O	FRAME	HP	TYPE	PHASE/ HERTZ	RPM	VOLTS
	405T	100	P	3/60	1785	230/460
AMPS	DUTY	AMB °C/ INSUL	S.F.	NEMA DESIGN	CODE LETTER	ENCLOSURE
224/112	CONT	40/H	1.15	B	G	TEFC
E/S	ROTOR	TEST S.O.	TEST DATE	STATOR RES. @25 °C OHMS (BETWEEN LINES)		
596956	418142-33-RE	---	---	.0123/.0492		

PERFORMANCE

LOAD	HP	AMPERES	RPM	% POWER FACTOR	% EFFICIENCY
NO LOAD	0	28.6	1800	5.49	0
1/4	25.0	39.2	1796	64.3	93.0
2/4	50.0	59.5	1792	82.5	95.4
3/4	75.0	84.6	1788	86.7	95.7
4/4	100	112	1783	87.4	95.4
5/4	125	141	1778	87.3	94.9


SPEED TORQUE

	RPM	TORQUE % FULL LOAD	TORQUE LB.-FT.	AMPERES
LOCKED ROTOR	0	151	445	725
PULL UP	360	136	400	706
BREAKDOWN	1721	250	735	382
FULL LOAD	1783	100	295	112

AMPERES SHOWN FOR 460 VOLT CONNECTION. IF OTHER CONNECTIONS ARE AVAILABLE, THE AMPERES WILL VARY INVERSELY WITH THE RATED VOLTAGE.

TYPICAL DATA

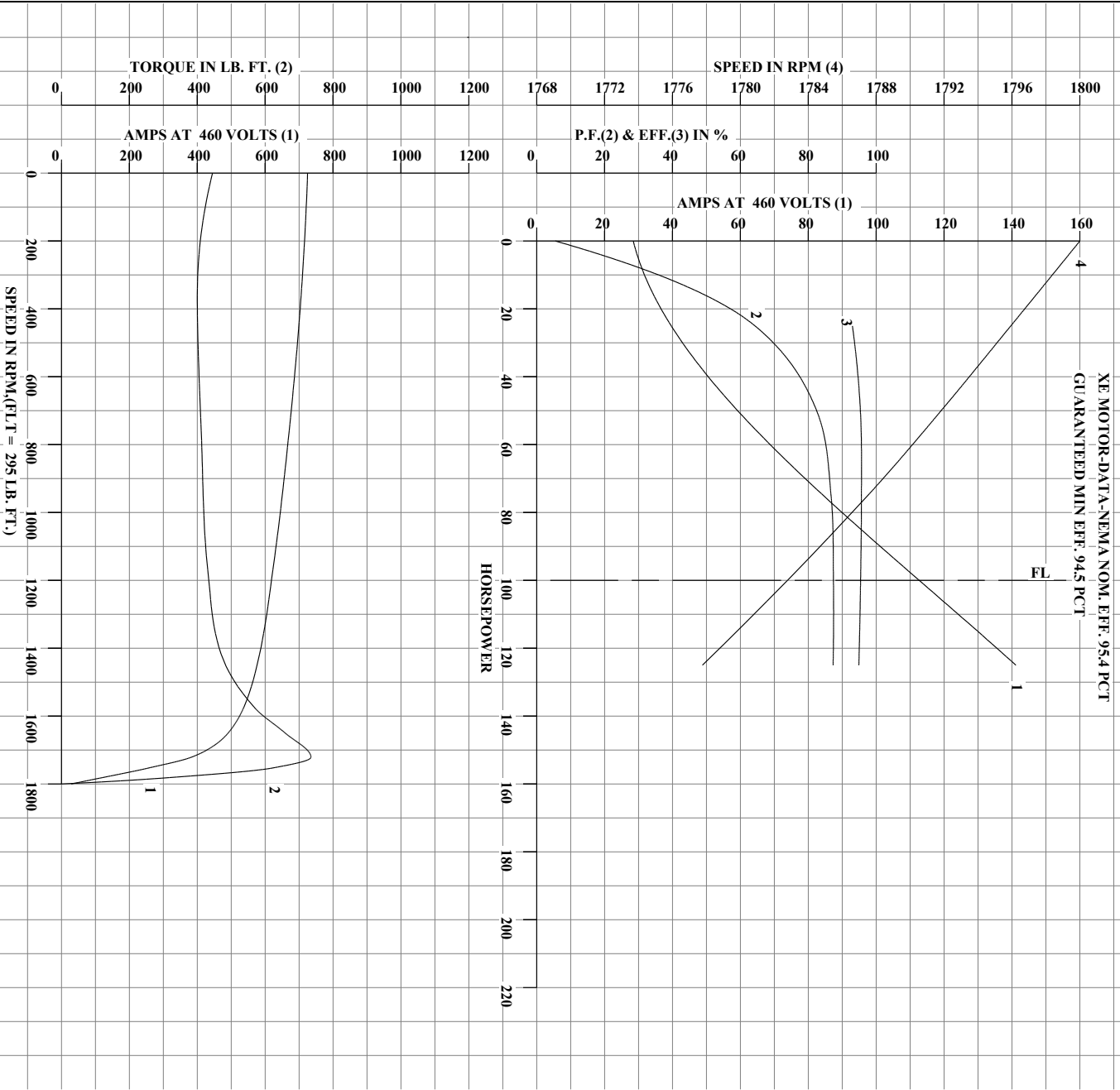
SEE MOTOR-DATA-NEMA NOM. EFF. 95.4 PCT
GUARANTEED MIN EFF. 94.5 PCT

	DRAWN BY: J.P. TSAO	AC MOTOR PERFORMANCE DATA	A40WG1610-R006
	CHECKED BY: W.L. SMITH APPROVED BY: W.L. SMITH DATE: 06/13/14		

USERGHR1

Printed on 01/08/2019 11:54 AM

REL.S.O.	405T	RPM	1785	S.F.	1.15	ROTOR	418142-33-RE
FRAME	100	VOLTS	230/460	NEMA DESIGN	B	TEST S.O.	TYPICAL DATA
HP	100	AMPS	224/112	CODE LETTER	G	TEST DATE	---
TYPE	P	DUTY CONT		ENCLOSURE	TEFC	STATOR RES. @ 25°C	.0123/.0492
PHASE / HERTZ	3/60	AMB °C / INSUL	40/H	E/S	596956	OHMS (BETWEEN LINES)	



AMPERES SHOWN FOR 230/460 VOLT CONNECTION, IF OTHER VOLTAGE CONNECTIONS ARE AVAILABLE, THE AMPERES WILL VARY INVERSELY WITH THE RATED VOLTAGE.



DRAWN BY: J.P. TSAO
 CHECKED BY: W.L. SMITH
 APPROVED BY: W.L. SMITH
 DATE: 06/13/14

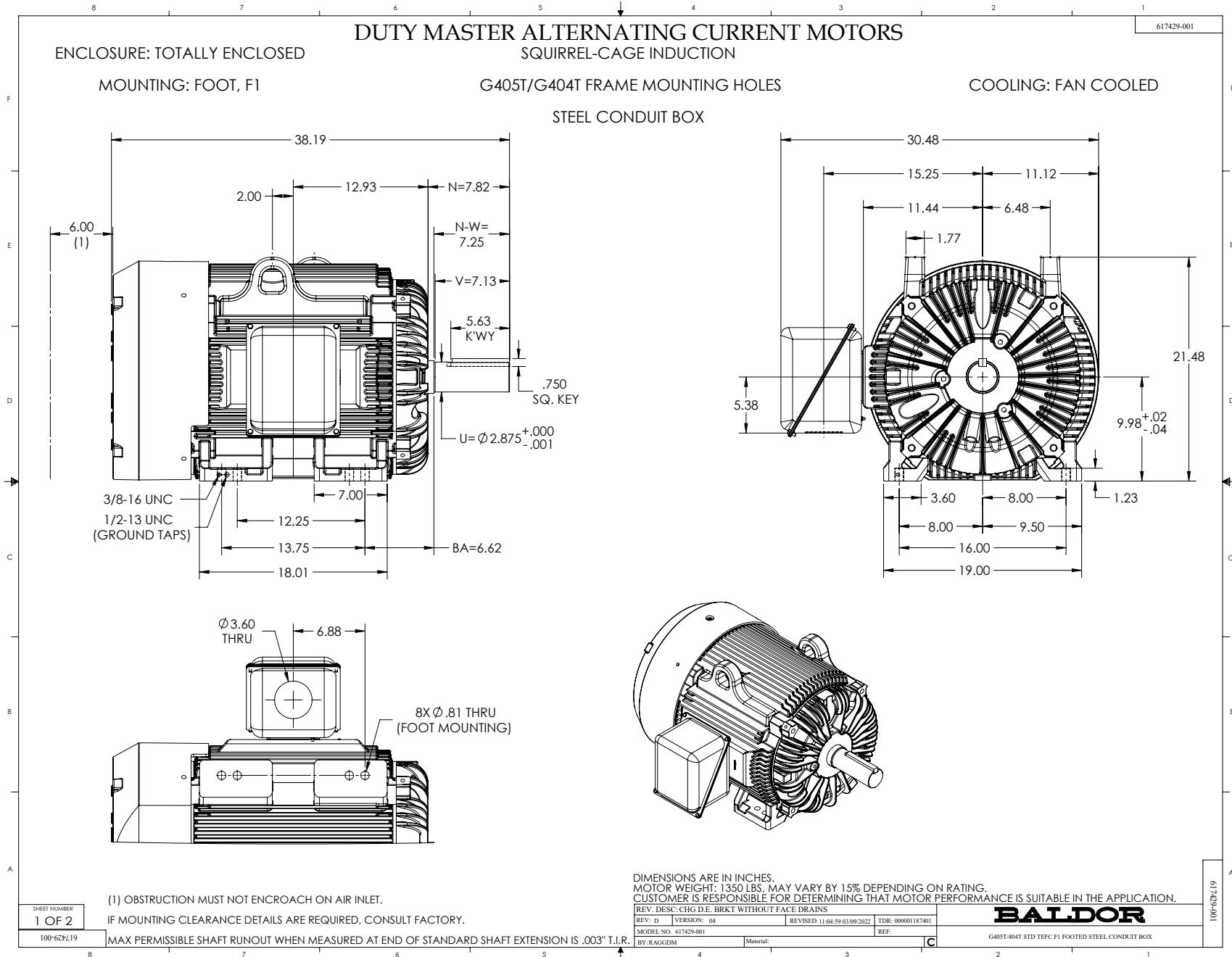
AC MOTOR
 PERFORMANCE
 DATA

A40W/G1610-R006

ISSUE DATE 06/13/14

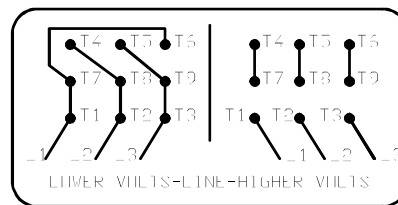
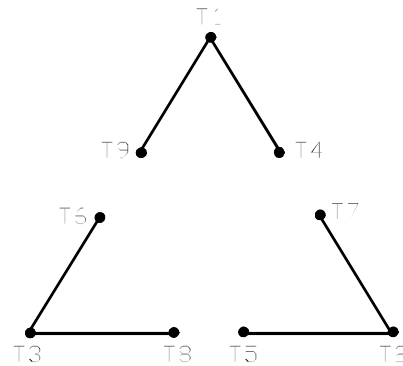
USER:CHRI

Printed on 01/08/2019 11:54 AM



416820-002

A-C MOTOR
 CONNECTION DIAGRAM
 STANDARD 9 LEAD DELTA-CONNECTED



(N.P. 1575-B)

416820-002

REV. DESC: FONT CHANGE FOR PDF SEARCHABLE		
REV. LTR: A	VERSION: 01	TDR: 000001009382
FILE: \MGA\00000\661	REVISED: 02:46:19 02/13/2020	BY: MGHMTT
MTL: -		© □

BALDOR - RELIANCE®

CONN DIAG - STANDARD 9 LEAD, DELTA-CONNECTED

SH 1 of 1