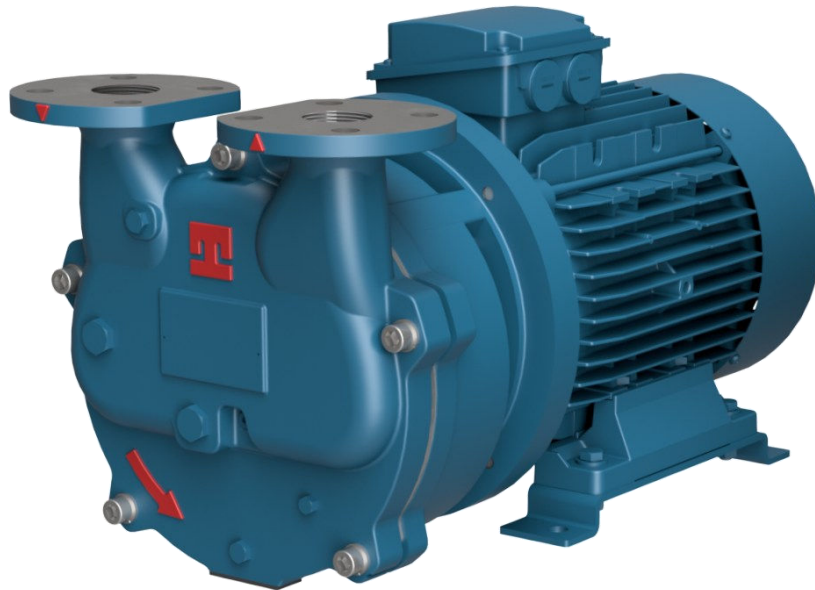


TRMX 40x series
Close-coupled motor mounted
vari-ported single stage
liquid ring vacuum pumps



200 Newsome Drive
Yorktown, VA 23693
800-535-4243
www.Travaini.com



Pressure Range	25 to 760 TORR
Capacity	30 to 155 CFM
Features	Single stage Vari-ported vacuum pump mounted on motor shaft.
Shaft sealing options	Mechanical seal
Options	Anticavitation valve
Accessories	Available as a component in a vacuum system

Technical Data

PUMP TYPE		TRMX 403	TRMX 405	TRMX 407
Speed	RPM	1750	1750	1750
Motor - installed power	HP	5.5	7.5	10
Avg. service liquid flow	GPM	4	5	5
Noise level at 150 Torr	dB(A)	69	70	74
Min. suction pressure	Torr	25	25	25

Standard Materials of Construction**

VDMA	Description	F	RX	A3
101	Pump casing	Cast Iron		
168	Impeller housing			
137	Port plate	AISI-304 Stainless Steel		
210	Shaft	AISI-316 Stainless Steel		
230	Impeller	Ductile Iron	AISI-304 Stainless Steel	

Model Designation

Example: TRMX 403/1-C/A3	
T	Travaini
R	Liquid Ring Pump
V	Motor mounted
X	Design revision
40x	40 is the Flange size (mm) 403-405-407 designate three different levels of pump capacity (see table here above)
C	C = Mechanical seal
A3	Materials of construction (see table here to the left)

** Special materials available upon request

- Request for information on how this pump is assembled into our WATERSEAL and DYNASEAL engineered vacuum systems.
- For further information please consult customer.service@travaini.com

DIAGRAMMA DI FUNZIONAMENTO

Performance curves

POMPA PER VUOTO AD ANELLO DI LIQUIDO

Liquid ring vacuum pump

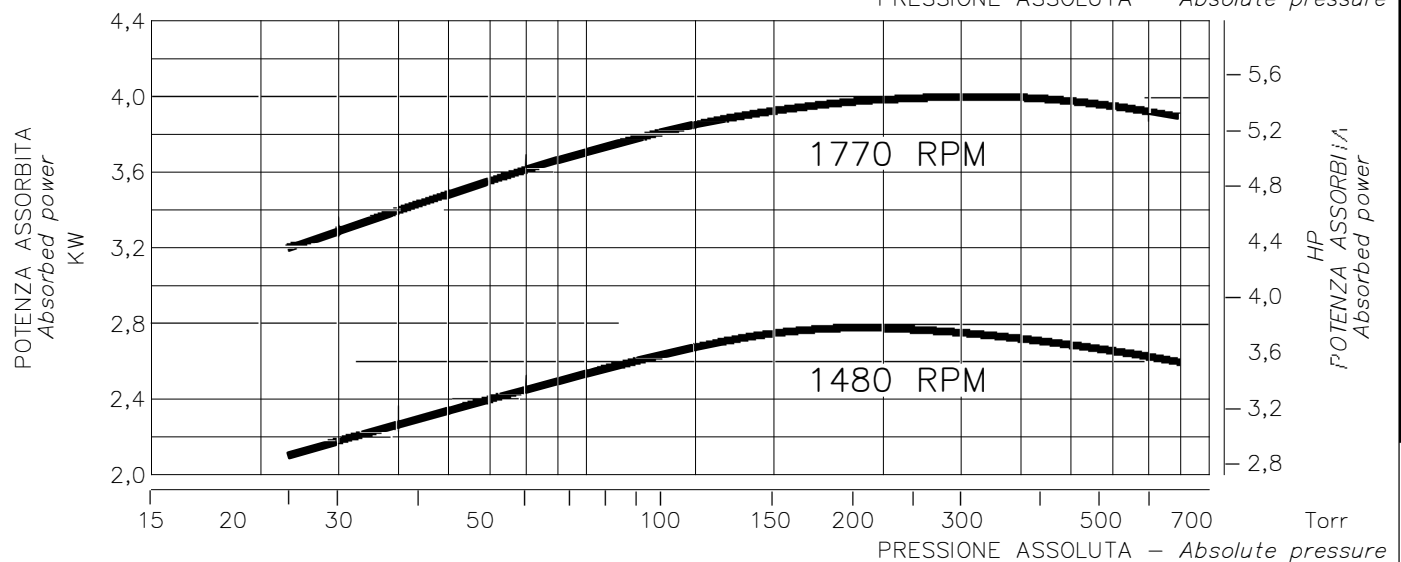
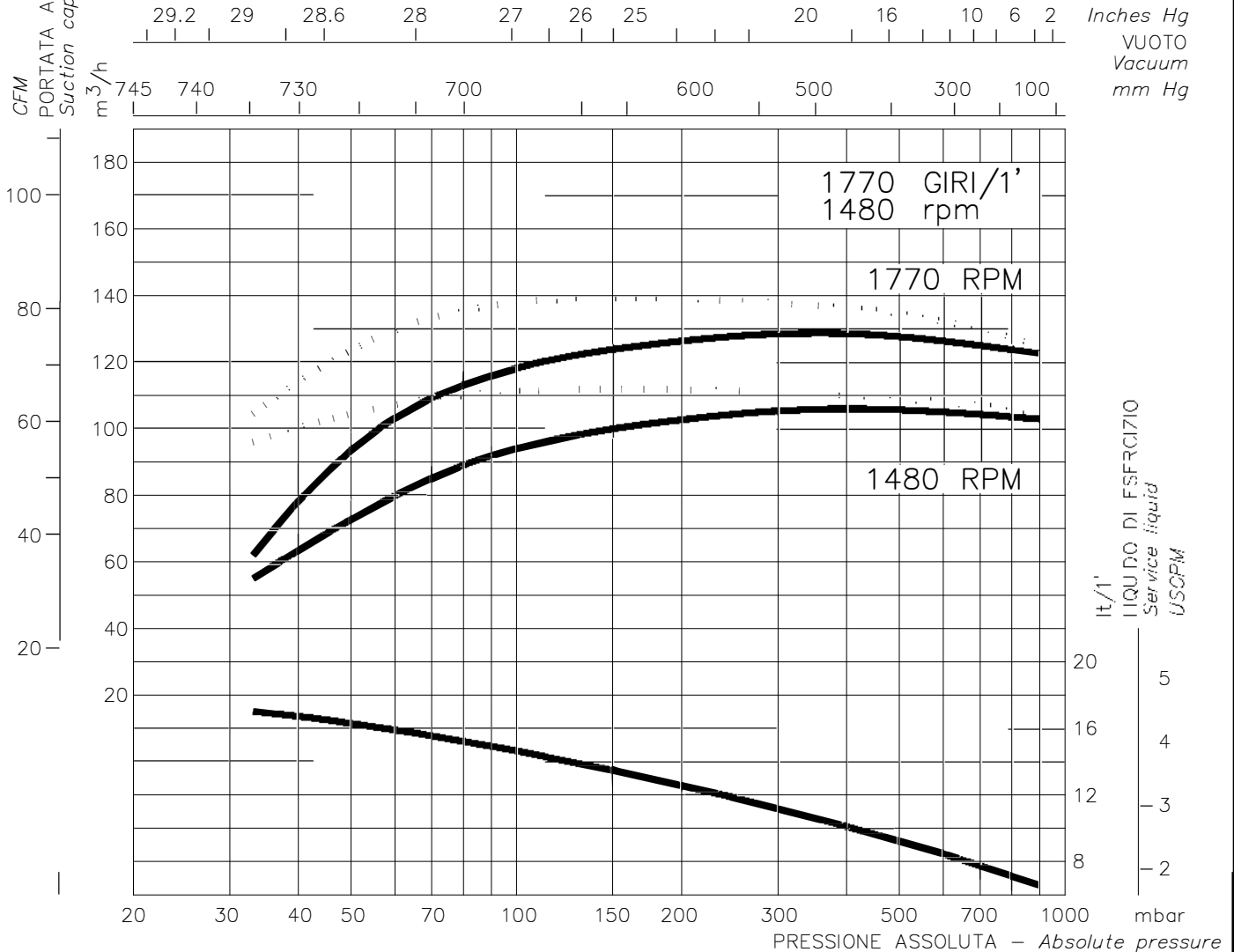
TIPO **TRMX/TRVX 403**



I DATI RIPORTATI SONO RIFERITI A :

Data refers to :

ARIA SECCA A 20 °C	—————	Dry air at 20 °C (68 °F)
ARIA SATURA A 20 °C	Saturated air at 20 °C (68 °F)
LIQUIDO DI ESERCIZIO	ACQUA - Water	Service liquid
TEMPERATURA LIQUIDO DI ESERCIZIO	15 °C - (59 °F)	Service liquid temperature
PRESSIONE DI SCARICO	1013 mbar	Discharge pressure
TOLLERANZE	10%	Tolerance



DIMENSIONI D'INGOMBRO / Overall dimensions
POMPA PER VUOTO AD ANELLO DI LIQUIDO

Liquid ring vacuum pumps

SERIE / Series

TRMX serie 400 /1-C

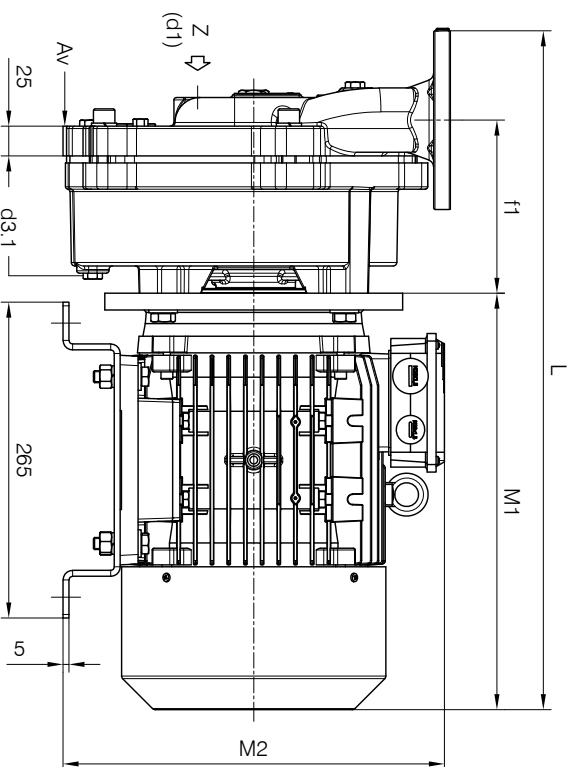
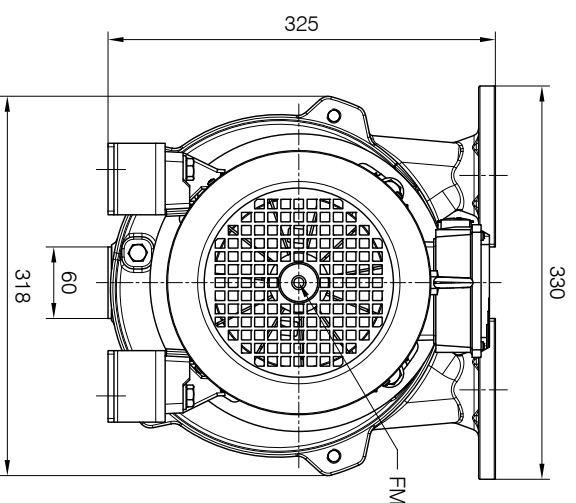
Le pompestravaini

Versione **MONOBLOCCO DIRETTO**

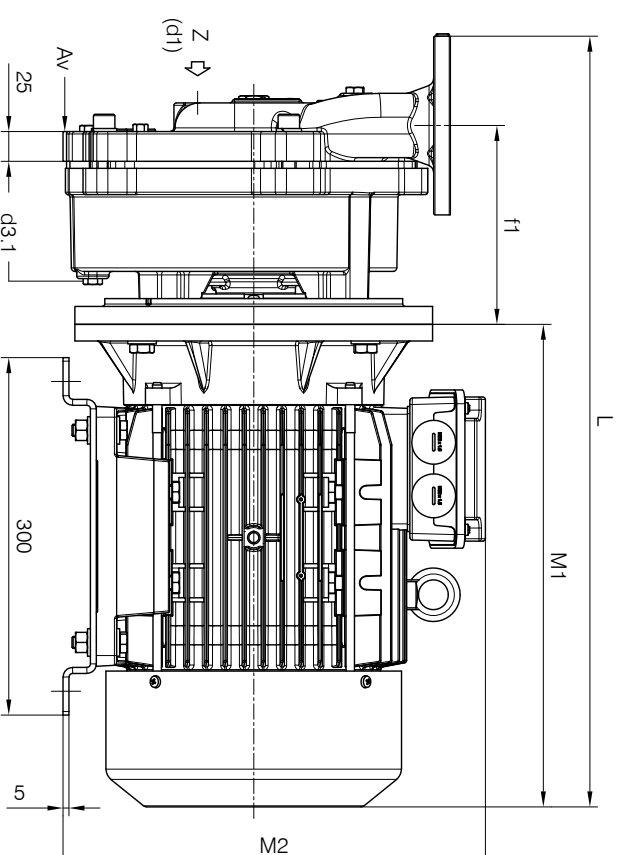
Rotazione oraria

MONOBLOCK FOR DIRECT COUPLING construction

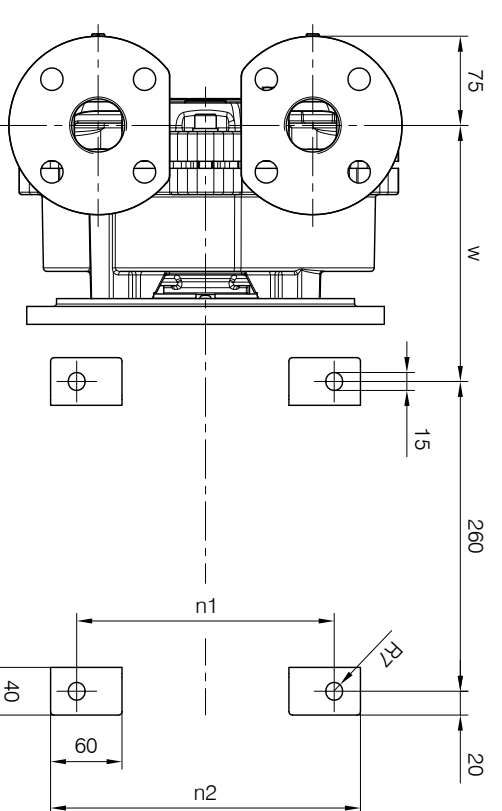
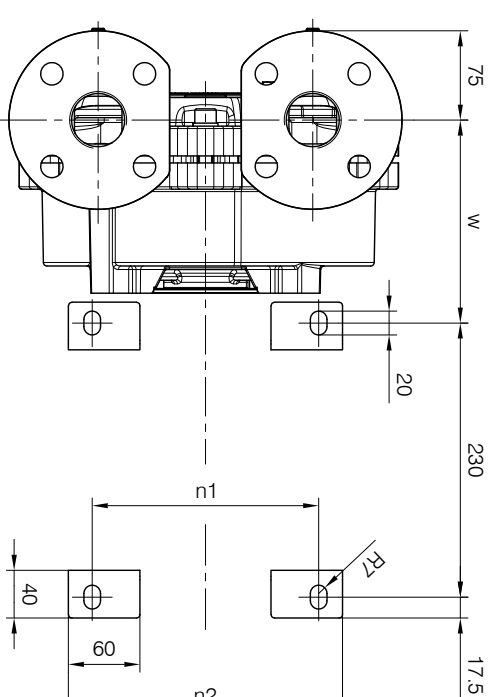
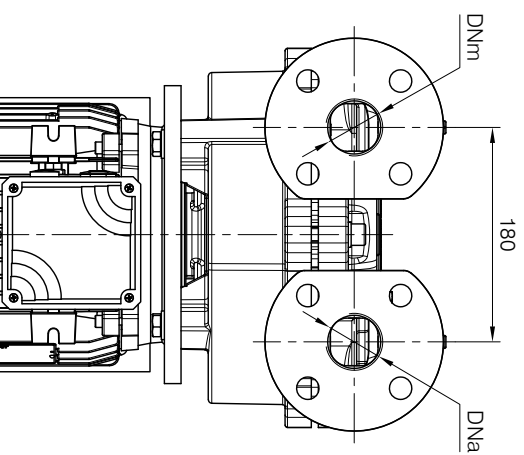
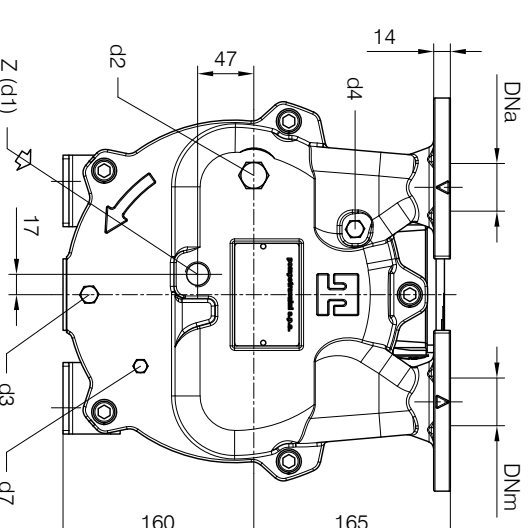
Clockwise rotation



Costruzione con Motore / Construction with Motor
KW 3.0 IEC 100 L - KW 4.0 IEC 112 M

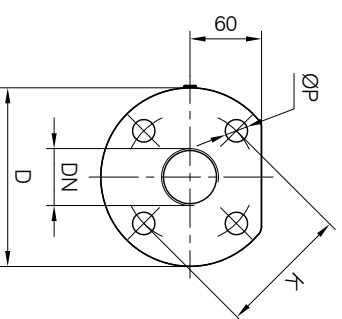


Costruzione con Motore / Construction with Motor
KW 5.5 IEC 132 S - KW 7.5 IEC 132 M



Costruzione con Motore / Construction with Motor
KW 5.5 IEC 132 S - KW 7.5 IEC 132 M

- d1 Connessione filettata G 1/2 - per ingresso alimentazione G 1/2 threaded connection - for liquid supply inlet
 - d2 Attacco tappato G 1/2 - connessione ausiliaria G 1/2 plugged connection - auxiliary connection
 - d3 Attacco tappato G 1/4 - per scarico corpo pompa G 1/4 plugged connection - for pump casing drain
 - d3.1 Attacco tappato G 1/4 - per scarico ausiliario corpo pompa G 1/4 plugged connection - for pump casing auxiliary drain
 - d4 Attacco tappato G 1/4 - per manovulometro G 1/4 plugged connection - for manovacuum gauge
 - d7 Attacco tappato G 1/8 - per valvola anticavitazione G 1/8 plugged connection - for anticavitation valve
- Nota / Note :
- Lt Quantità di acqua all'asse dell'albero in litri Water quantity at shaft axis in liters
 - Mi Momento di inerzia Max all'avviamento Max Moment of inertia at start-up
 - Av Spessore antivibrante Anti vibration pad



FLANGE FILETTATE SPECIALI / SPECIAL THREADED FLANGES

Filettatura secondo UNI EN ISO 228-1
Dimensioni foratura secondo EN 1092 - PN10
Threaded according to UNI/EN ISO 228-1
Drilling dimensions according to EN 1092 - PN10

Dimensioni flange Flanges dimensions				
DNa-DNm	D	K	P	N° fori holes
DN 40	150	110	19	4
G 1 1/2				

POMPA TIPO Pump type	Dimensioni costruttive Construction dimensions											Peso Weight	
	DNa - DNm	Ml kgm ²	Lt	H _Z	KW	L	f1	w	n1	n2	M1		M2
TRMX 403	DN 40 G 1 1/2	0.04	1.9	50	3.0	503	122	140.5	160	200	306	304	61
TRMX 405	DN 40 G 1 1/2	0.05	2.5	50	4.0	570	145	170.5	190	230	350	320	72
TRMX 407	DN 40 G 1 1/2	0.08	3.3	50	5.5	662	182	230.5	216	260	405	355	96

MOTORI ELETTRICI Electric Motors	
Grandezza Frame size IEC B35	Giri/min. RPM 1450 - 50 Hz
100 L	3.0
112 M	4.0
132 S	5.5
132 M	7.5
Grandezza Frame size IEC B35	Giri/min. RPM 1760 - 60 Hz
112 M	4.0
132 S	5.5
132 M	7.5

Sicurezza del macchinario secondo UNI EN ISO 13857. Connessioni filettate secondo UNI EN ISO 228-1.
Disegno schematico. Dimensioni in mm con tolleranze secondo EN 735-1995. Pesi indicativi in kg, riferiti a pompe in ghisa, non impegnativi.
Safety of machinery according to UNI EN ISO 13857. Threaded connection according to UNI EN ISO 228-1.
Schematic drawing. Dimensions in mm with tolerances according to EN 735-1995 standards. Weights in kgs, referred to pumps in cast iron, not binding.

REF. - Ref.: E.C./C.T. DOCUMENTO N. - Document no.: 751X.1L7.2005
DATA - Date: 02-2024 SOSTITUISCE DOC. - Replaces Doc. (ITEM): D0509R

ITEM n° D0509R