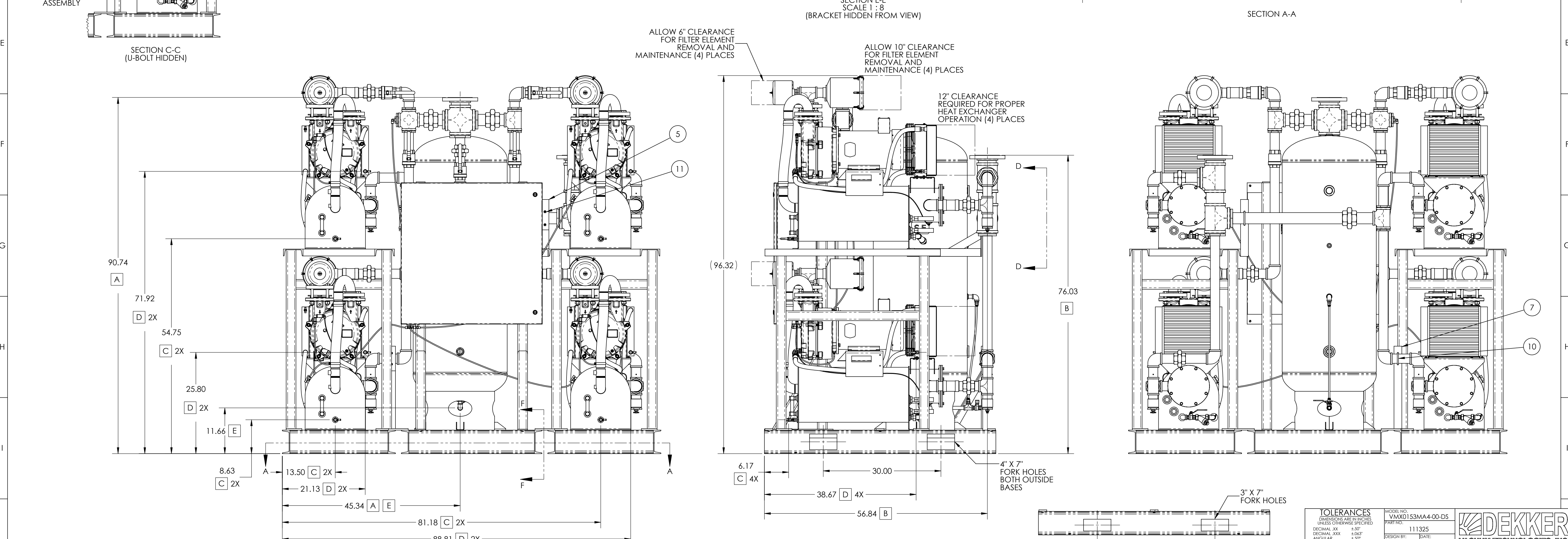
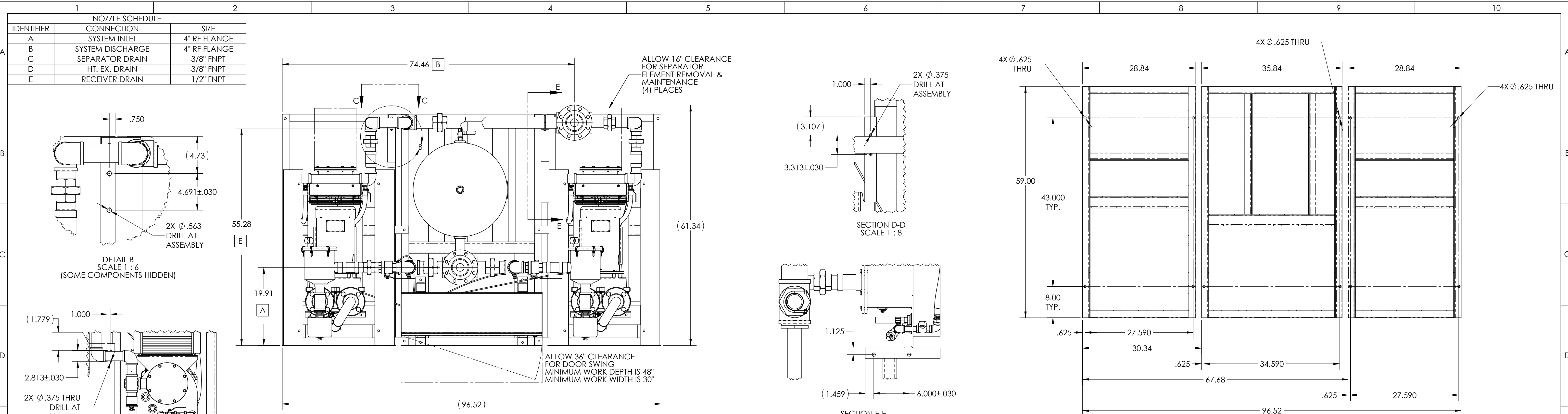


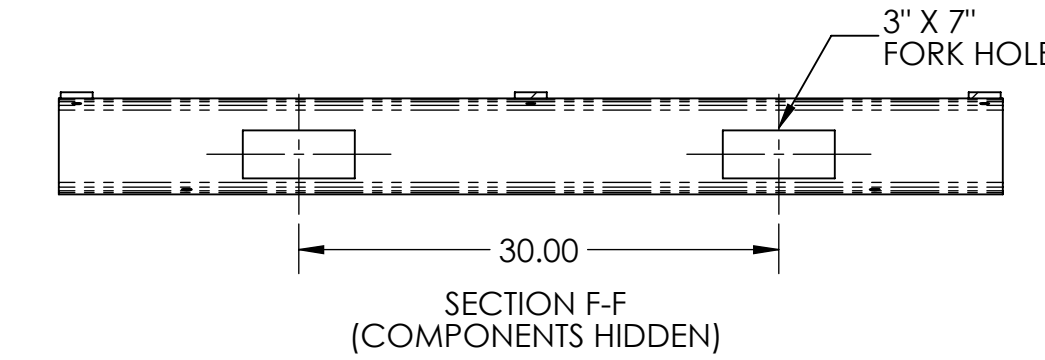
NOZZLE SCHEDULE		
IDENTIFIER	CONNECTION	SIZE
A	SYSTEM INLET	4" RF FLANGE
B	SYSTEM DISCHARGE	4" RF FLANGE
C	SEPARATOR DRAIN	3/8" FNPT
D	HT. EX. DRAIN	3/8" FNPT
E	RECEIVER DRAIN	1/2" FNPT



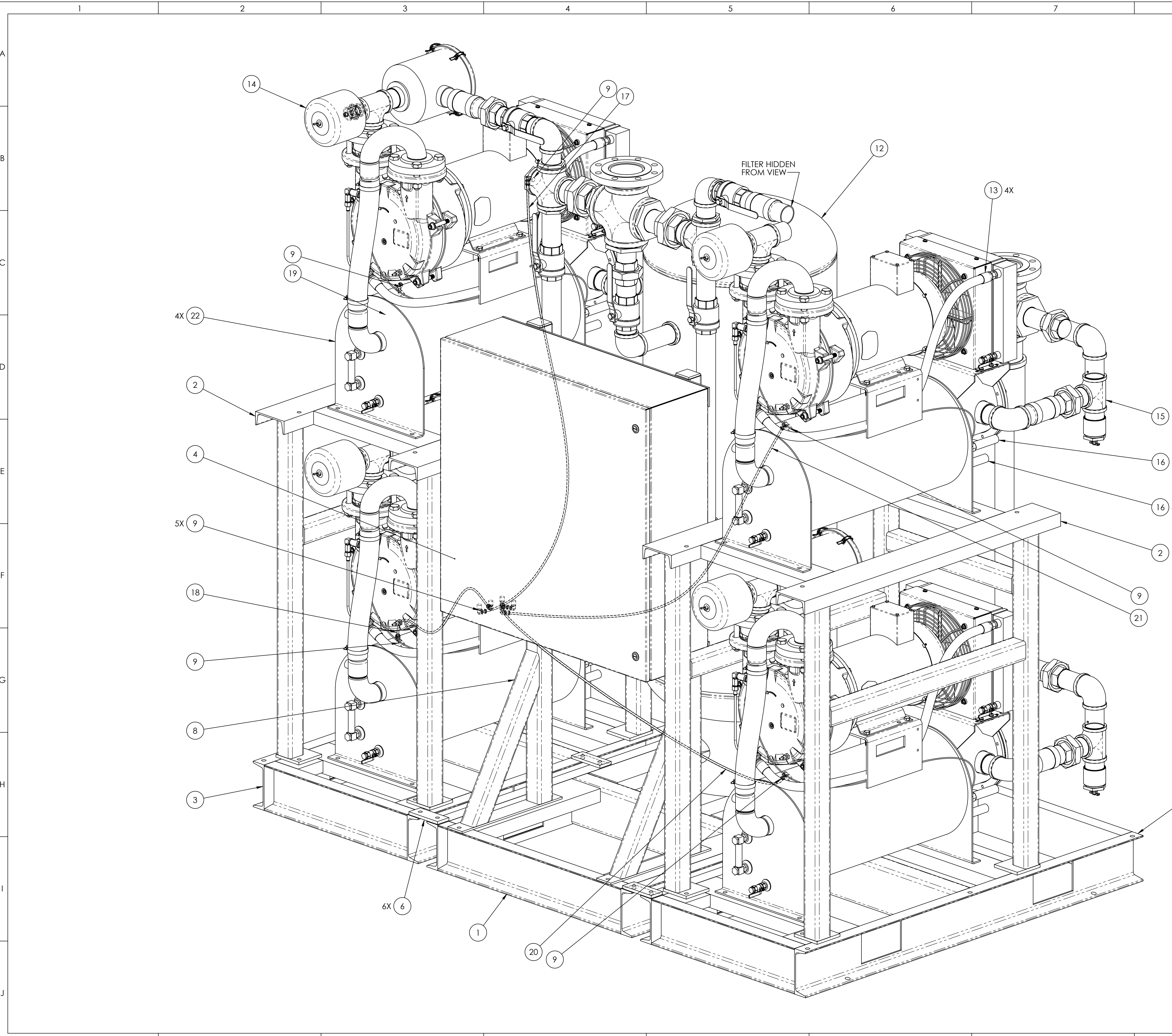
- NOTES:
- 1) LOCATE VACUUM PUMP ON FLAT LEVEL SURFACE.
  - 2) PLUG ALL UNUSED PORTS WITH NPT PLUG.
  - 3) OIL CAPACITY: 25 GALLONS (6.25 GALLONS PER PUMP) P/N: 5220-3300-000
  - 4) REFERENCE WI-EN-039 FOR ALL HARDWARE TORQUE SPECIFICATIONS

FRONT VIEW  
(SOME COMPONENTS HIDDEN FOR CLARITY)

<b>TOLERANCES</b> DIMENSIONS ARE IN INCHES UNLESS OTHERWISE SPECIFIED DECIMAL .XX ±.01 DECIMAL .XXX ±.005 ANGULAR XXX ±.50° DRILLED HOLE DIA. +0.020/-0.010" PIPE LENGTHS ARE REFERENCE		MODEL NO. VMX0153MA4-00-DS PART NO. 111325 DESIGN BY: CB DATE: 09/25/23 CHECKED BY: CB DATE: 09/25/23 R.C. DATE: 09/27/23 APPROVED BY: KEC DATE: 09/29/23 REVIEWED BY: DATE:	DESCRIPTION: VMX0153MA4-00-DS 460V DRAWING TYPE: PRODUCTION DWG NO.: 2023638 SHEET NO.: 1 OF 3
--	--	--	---



SECTION F-F  
(COMPONENTS HIDDEN)

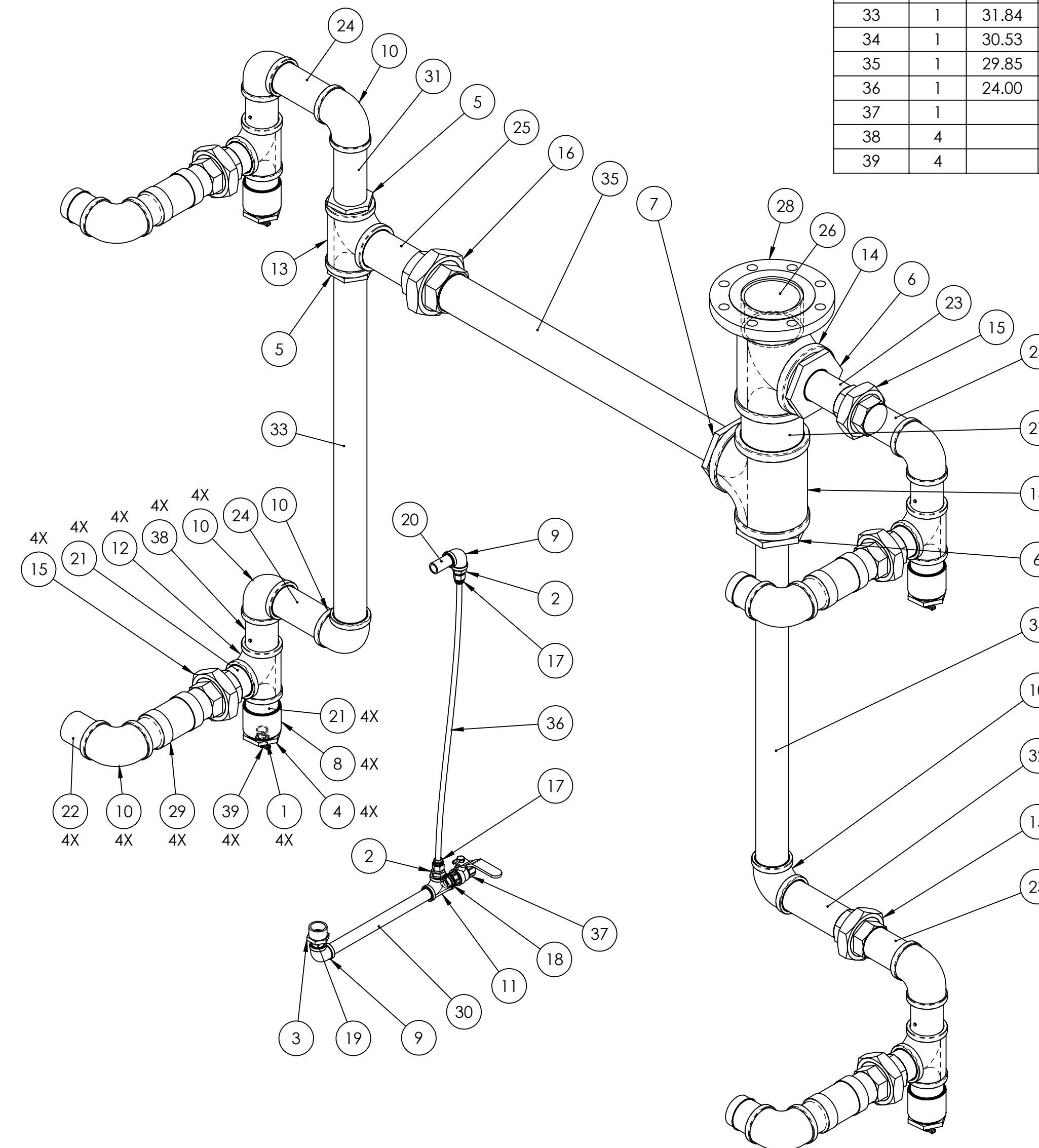
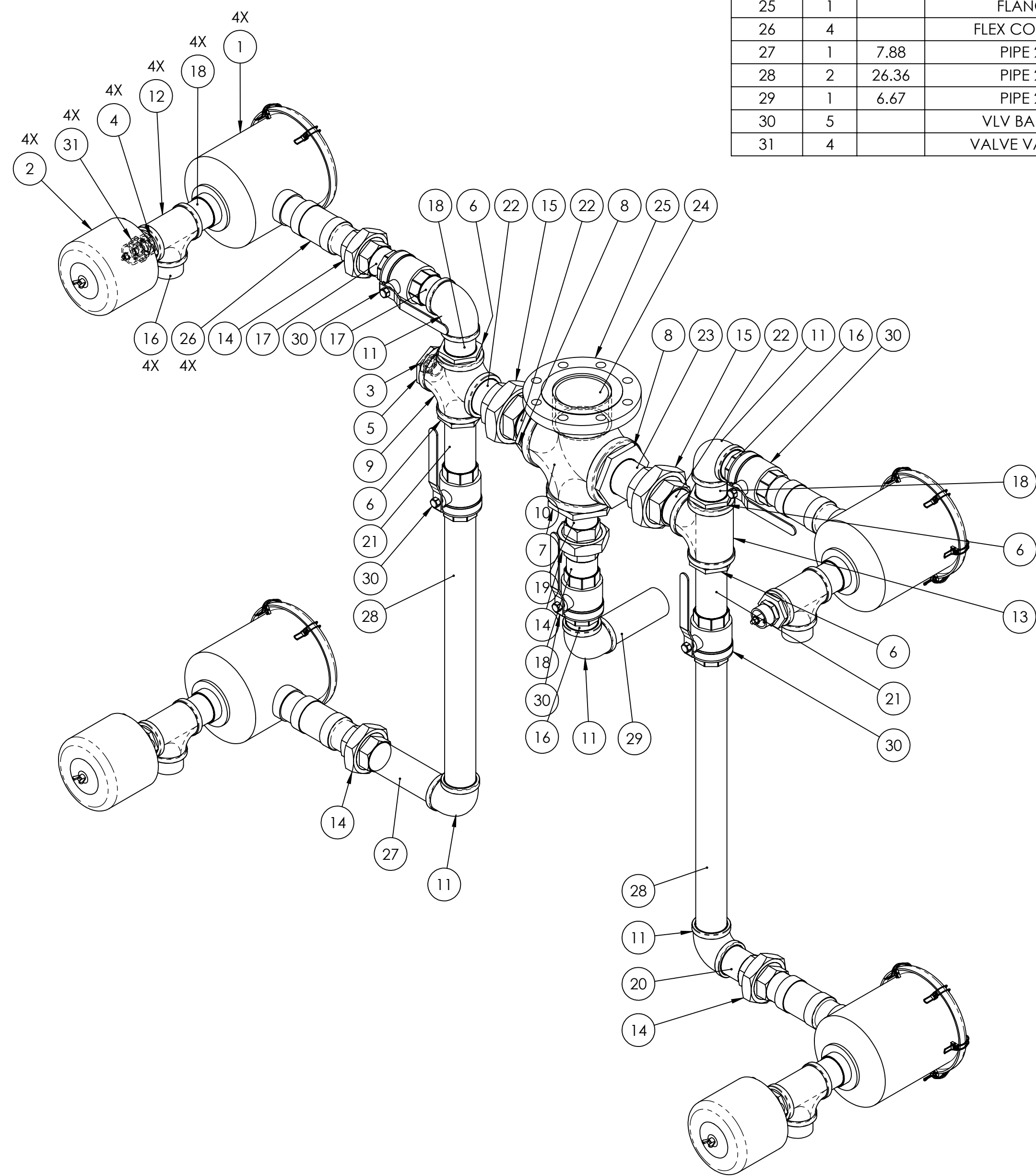


				111325			
ITEM NO.	QTY.	Dwg no.	LENGTH	DESCRIPTION	PART NUMBER		
1	1	2023639		BASEPLATE REC-PNL SEGMENT	0300-2023-639		
2	2	2023694		STACK MOUNT VMX0153MA1-11	0300-2023-694		
3	2	2023825		BASEPLATE VMX0153MA1-11	0300-2023-825		
4	1			CTRL PNL QUADPLEX VMAX 10HP 460V NEMA 4	2202-1113-250		
5	1	2023236		PIPE SUPPORT BRACKET CS	2728-2023-236		
6	6	2023830		STRUT BRACKET FLAT 5"	2728-2023-830		
7	1	2023895		PIPE SUPPORT BRACKET CS	2728-2023-895		
8	1	2023668		PANEL BRACKET 36X36 CS	2730-2023-668		
9	10			FTNG 90° .25"MNPTX.25" TUBE BRS PUSH	3039-0025-001		
10	1			U-BOLT 2.5" ID 5/16-18 UNC.2" PIPE	3825-0250-001		
11	1			U-BOLT 3" ID 5/16-18 UNC.2.5" PIPE	3825-0300-001		
12	1			RECEIVER TANK VERT 120 GAL CS ASME	6004-0120-100		
13	4			SUB ASSEMBLY PIPING VMX0153M AIR	6870-0153-011		
14	1			SYSTEM PIPING CS	6890-111325		
15	1			EXHAUST MANIFOLD PIPING CS	6890-111325-1		
16	8			SWITCH LEVEL 1"MNPT N7 BRS/SST/GOLD	6910-0100-007		
17	1		61.00	TUBING .25"OD FEP/TEFLN TRANSLUCENT	7200-0025-001		
18	1		32.00	TUBING .25"OD FEP/TEFLN TRANSLUCENT	7200-0025-001		
19	1		51.00	TUBING .25"OD FEP/TEFLN TRANSLUCENT	7200-0025-001		
20	1		47.00	TUBING .25"OD FEP/TEFLN TRANSLUCENT	7200-0025-001		
21	1		57.00	TUBING .25"OD FEP/TEFLN TRANSLUCENT	7200-0025-001		
22	4	2010168		VMAX 150 CFM SYSTEM 10 HP TEFC MTR	VMX0153MA1-11		

<b>TOLERANCES</b> DIMENSIONS ARE IN INCHES UNLESS OTHERWISE SPECIFIED DECIMAL .XX ±.005" DECIMAL .XXX ±.003" ANGULAR ±.50° DRILLED HOLE DIA. +0.020/-0.010" PIPE LENGTHS ARE REFERENCE	MODEL NO. VMX0153MA4-00-DS PART NO. 111325		
	DESIGN BY: CB DATE: 09/25/23 DRAWING BY: CB DATE: 09/25/23 CHECKED BY: R.C DATE: 09/27/23		DESCRIPTION: VMX0153MA4-00-DS 460V
	THIRD ANGLE PROJECTION 		APPROVED BY: KEC DATE: 09/29/23 REVIEWED BY: DATE:
	THIS PRINT IS PROPERTY OF DEKKER VACUUM TECHNOLOGIES, INC. AND MAY NOT BE GIVEN TO ANY OTHER CONCERN WITHOUT THE CONSENT OF DEKKER VACUUM TECHNOLOGIES, INC.		DRAWING TYPE: ISO/BOM DWG NO.: 2023638 WEIGHT: 4268.89 LB SCALE: 1:6 SHEET NO.: 2 OF 3

6890-111325				
ITEM NO.	QTY.	LENGTH	DESCRIPTION	PART NUMBER
1	4		FILTER INLET 2" 175 CFM POLYESTER	2920-0200-001
2	4		FILTER INLET SLNCR 1.25" 70CFM POLY	2926-0125-001
3	1		BUSHING STEEL 1.0"MNPT X .25"FNPT	3002-1002-025
4	4		BUSHING 2.0"MNPT X 1.25"FNPT	3002-2012-025
5	1		BUSHING 2.5"MNPT X 1.00"FNPT	3002-2510-025
6	4		BUSHING 2.5"MNPT X 2.0"FNPT	3002-2520-025
7	1		BUSHING 4.0"MNPT X 2.00"FNPT	3002-4020-025
8	2		BUSHING 4.0"MNPT X 2.50"FNPT	3002-4025-025
9	1		CROSS 2.5" FNPT	3005-0250-025
10	1		CROSS 4.0" FNPT	3005-0400-025
11	5		ELBOW 2.0" 90°	3012-0200-025
12	4		TEE 2.00" FNPT	3025-0200-025
13	1		TEE 2.50" FNPT	3025-0250-025
14	4		UNION 2.00" FNPT	3031-0200-025
15	2		UNION 2.50" FNPT	3031-0250-025
16	6	2.00	NIPPLE 2.0"MNPT X CLOSE	3086-2000-025
17	2	2.50	NIPPLE 2.0"MNPT X 2.5"	3086-2025-025
18	7	3.00	NIPPLE 2.0"MNPT X 3.0"	3086-2030-025
19	1	3.35	NIPPLE 2.0"MNPT X 3.5"	3086-2035-025
20	1	3.38	NIPPLE 2.0"MNPT X 3.5"	3086-2035-025
21	2	6.00	NIPPLE 2.0"MNPT X 6.0"	3086-2060-025
22	3	3.00	NIPPLE 2.5"MNPT X 3.0 LG CS	3086-2530-025
23	1	4.62	NIPPLE 2.50"MNPT X 4.5" LG CS	3086-2545-025
24	1	2.88	NIPPLE 4.0"MNPT X CLOSE CS	3086-4000-025
25	1		FLANGE THD 4" 150# CS W/RF	3216-0400-000
26	4		FLEX CONN 2" MNPT X 8"LG 304S/CS	3300-0200-001
27	1	7.88	PIPE 2" NOM DIA XSCH40 CS.	5500-0200-000
28	2	26.36	PIPE 2" NOM DIA XSCH40 CS.	5500-0200-000
29	1	6.67	PIPE 2" NOM DIA XSCH40 CS.	5500-0200-000
30	5		VLV BALL 2.0" FNPT FP 2-PC BRZ/TF	7302-0200-000
31	4		VALVE VAC RELIEF 1.25" ADJ 60SCFM	7342-0125-000

6890-111325-1				
ITEM NO.	QTY.	LENGTH	DESCRIPTION	PART NUMBER
1	4		BUSHING .5"MNPT X .25"FNPT	3002-0502-025
2	2		BUSHING .5"MNPT X .375"FNPT	3002-0503-025
3	1		BUSHING 1.0"MNPT X .5"FNPT STEEL	3002-1005-025
4	4		BUSHING 2.0"MNPT X .5"FNPT	3002-2005-025
5	2		BUSHING 2.5"MNPT X 2.0"FNPT	3002-2520-025
6	2		BUSHING 4.0"MNPT X 2.00"FNPT	3002-4020-025
7	1		BUSHING 4.0"MNPT X 2.50"FNPT	3002-4025-025
8	4		CPLG 2" FNPT FULL 150# CS.	3003-0200-000
9	2		ELBOW .50" 90°	3012-0050-025
10	11		ELBOW 2.0" 90°	3012-0200-025
11	1		TEE .5" FNPT	3025-0050-025
12	4		TEE 2.00" FNPT	3025-0200-025
13	1		TEE 2.50" FNPT	3025-0250-025
14	2		TEE 4.0" FNPT	3025-0400-025
15	6		UNION 2.00" FNPT	3031-0200-025
16	1		UNION 2.50" FNPT	3031-0250-025
17	2		FTNG STR .38"MNPTX.38"UBE BRS PUSH	3038-0038-001
18	1	1.13	NIPPLE .5"MNPT X CLOSE	3086-0500-025
19	1	1.50	NIPPLE .5"MNPT X 1.5"	3086-0515-025
20	1	2.00	NIPPLE .50"MNPT X 2.0"	3086-0520-025
21	8	2.50	NIPPLE 2.0"MNPT X 2.5"	3086-2025-025
22	4	3.00	NIPPLE 2.0"MNPT X 3.0"	3086-2030-025
23	3	4.50	NIPPLE 2.0"MNPT X 4.5"	3086-2045-025
24	2	6.00	NIPPLE 2.0"MNPT X 6.0"	3086-2060-025
25	1	6.00	NIPPLE 2.5"MNPT X 6.0" LG CS	3086-2560-025
26	1	2.88	NIPPLE 4.0"MNPT X CLOSE CS	3086-4000-025
27	1	5.00	NIPPLE 4.0"MNPT X 5.0" CS	3086-4050-025
28	1		FLANGE THD 4" 150# CS W/RF	3216-0400-000
29	4		FLEX CONN 2" MNPT X 8"LG 304S/CS	3300-0200-001
30	1	11.00	PIPE .50" NOM DIA XSCH40 CS.	5500-0050-000
31	1	8.00	PIPE 2" NOM DIA XSCH40 CS.	5500-0200-000
32	1	6.75	PIPE 2" NOM DIA XSCH40 CS.	5500-0200-000
33	1	31.84	PIPE 2" NOM DIA XSCH40 CS.	5500-0200-000
34	1	30.53	PIPE 2" NOM DIA XSCH40 CS.	5500-0200-000
35	1	29.85	PIPE 2.5" NOM DIA X SCH40 CS.	5500-0250-000
36	1	24.00	TUBING .38" OD FEP/TEFLN TRANSLUCNT	7200-0038-001
37	1		VLV BALL .5"FNPT FP 2-PC BRZ/TF	7302-0050-000
38	4		VLV CK HNG 2" THD CS/AL/BUNA	7316-0200-000
39	4		VLV PETCOCK .25" BRASS	7329-0025-000



<b>TOLERANCES</b> DIMENSIONS ARE IN INCHES UNLESS OTHERWISE SPECIFIED DECIMAL .XX ±.01 DECIMAL .XXX ±.005 ANGULAR ±.5° DRILLED HOLE DIA. +0.020/-0.010 PIPE LENGTHS ARE REFERENCE	MODEL NO.	111325	
	PART NO.	DATE	09/25/23
	DESIGN BY	DATE	09/25/23
	CHECKED BY	DATE	09/27/23
THIRD ANGLE PROJECTION	APPROVED BY	DATE	09/29/23
THIS PRINT IS PROPERTY OF DEKKER VACUUM TECHNOLOGIES, INC. AND MAY NOT BE COPIED OR REPRODUCED IN ANY MANNER WITHOUT THE CONSENT OF DEKKER VACUUM TECHNOLOGIES, INC.	<b>DEKKER</b> VACUUM TECHNOLOGIES, INC.	DESCRIPTION: VMX0153MA4-00-DS 460V	DRAWING TYPE PIPING
WEIGHT: 4268.89 LB	SCALE: 1:7	DWG NO. 2023638	SHEET 3 OF 3